

GILLETTE COMMUNITY MEETING

January 30, 2024



Agenda

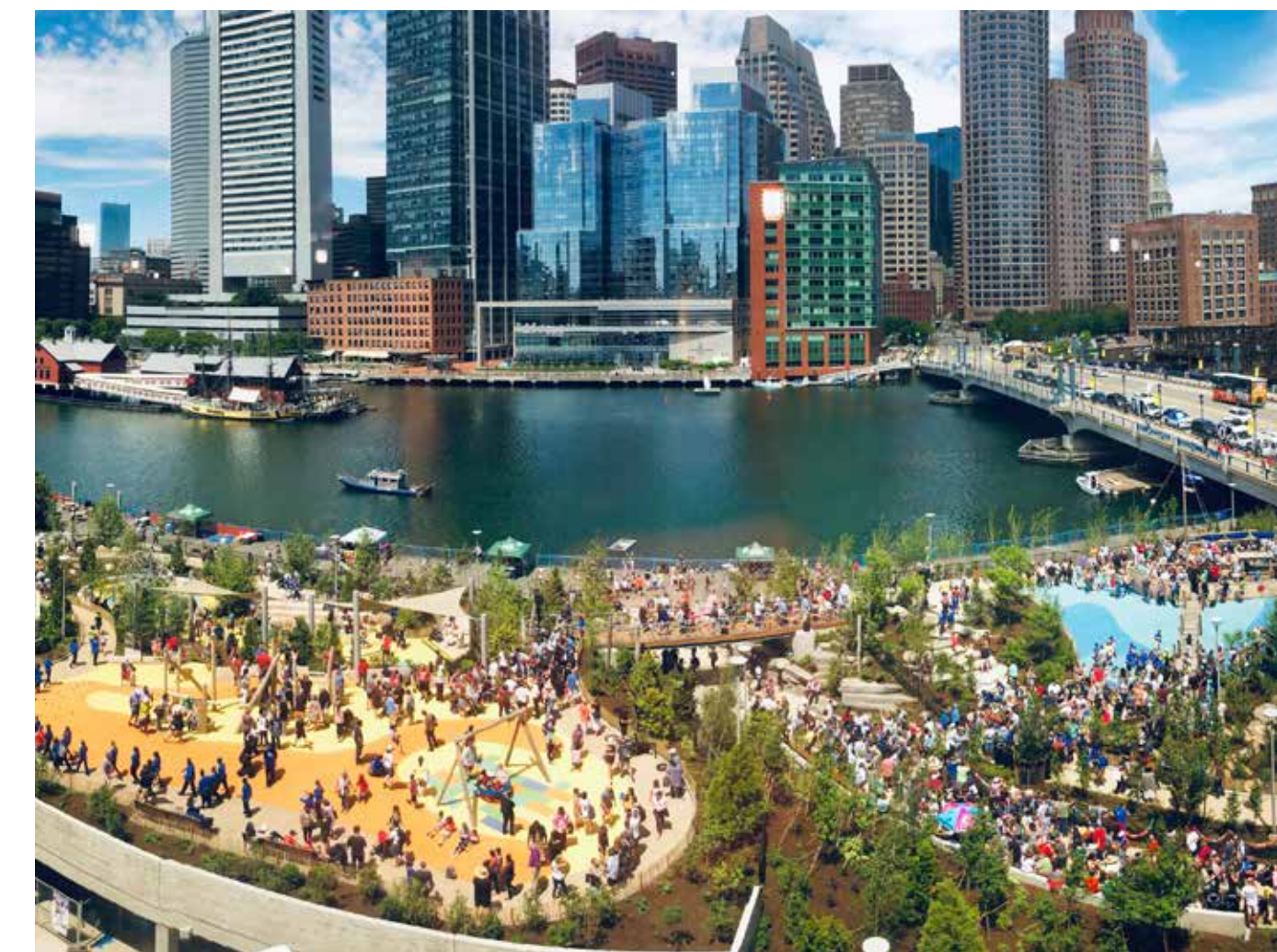
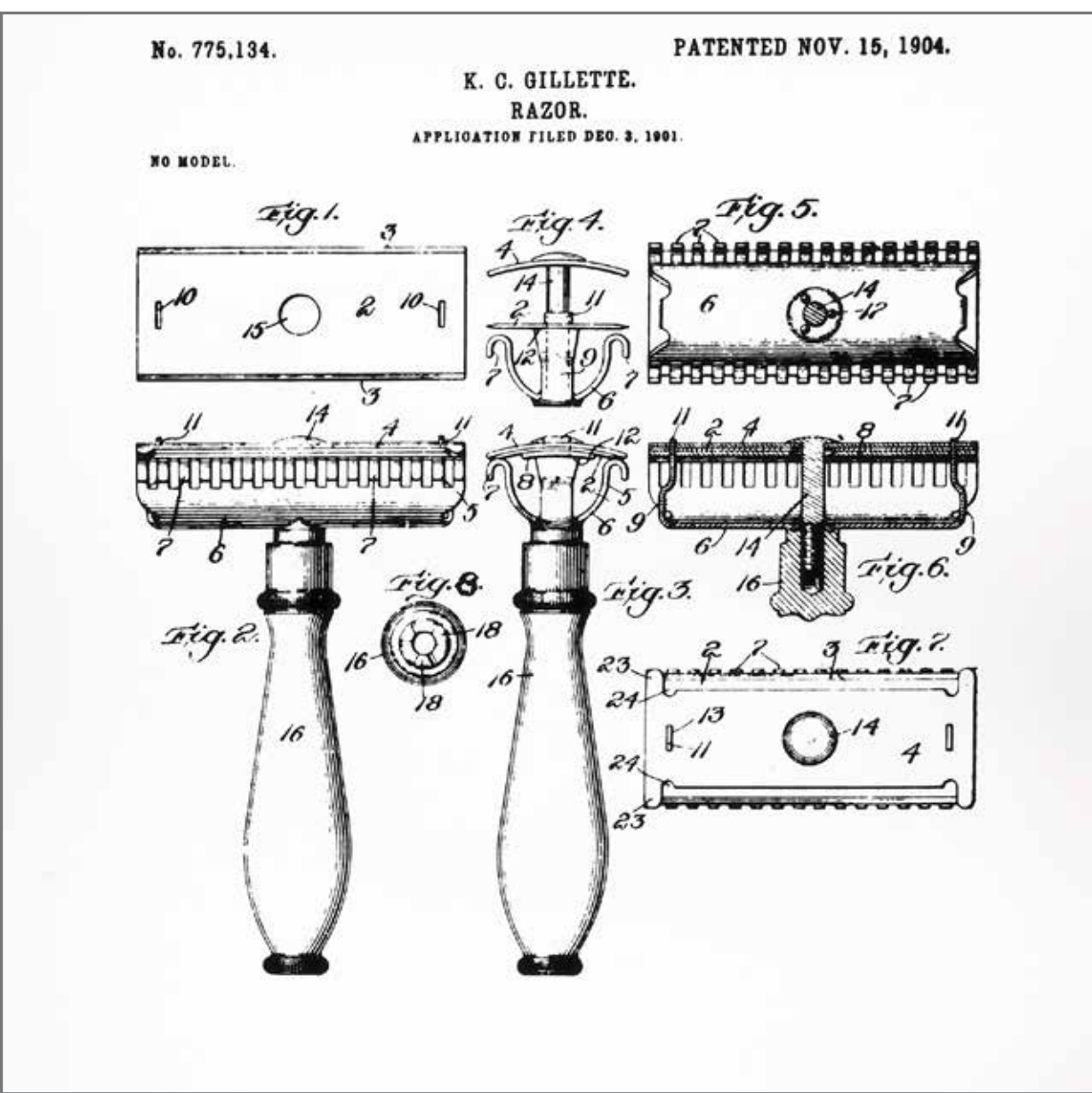
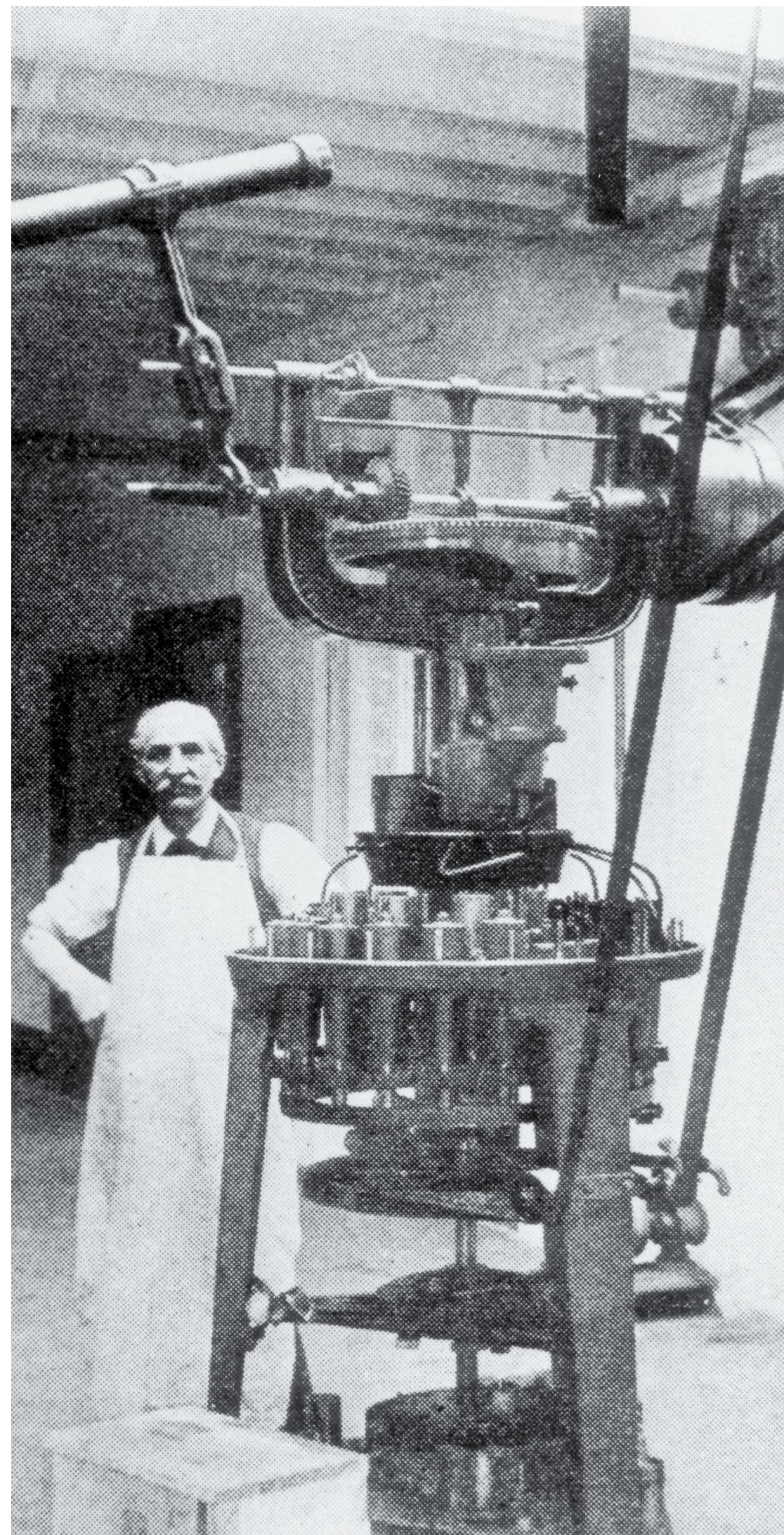
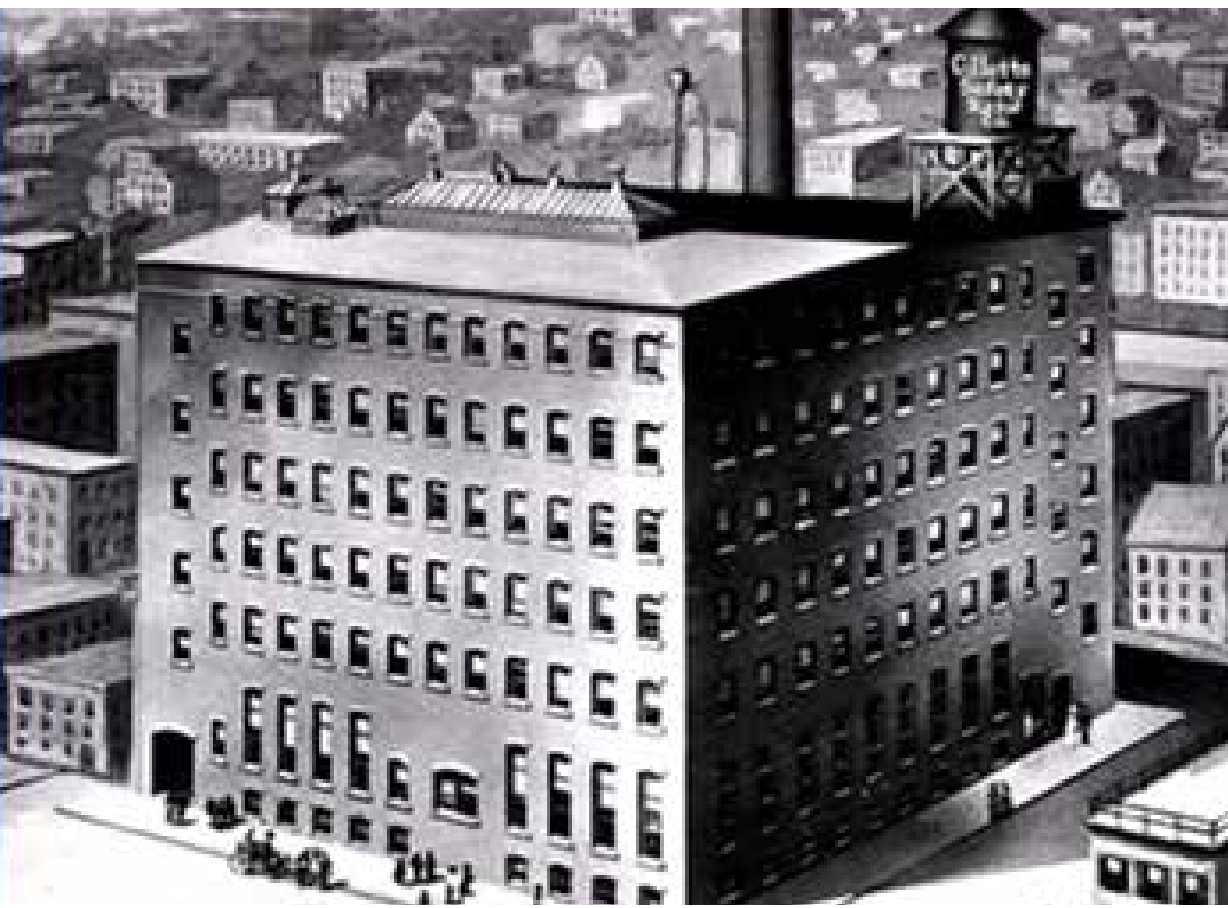
1. Who We Are
2. Gillette's Future
3. Opportunities
4. Future of Site
5. Next Steps

Commitment To The Community

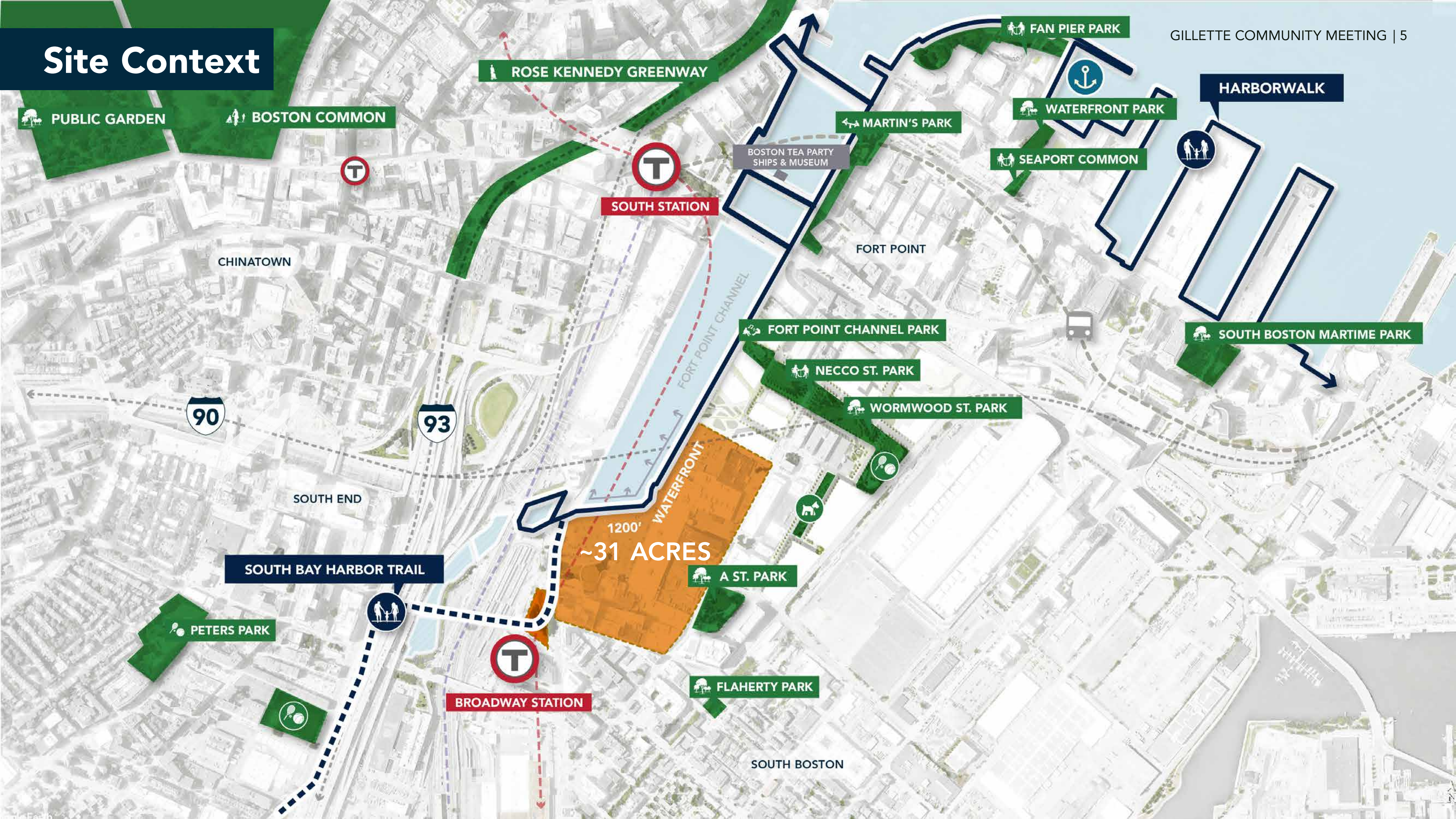
- Founded in South Boston in 1901; Long history of innovation
- Long-standing partnerships with United Way & South Boston Association of Non-profits
- 40+ non-profits supported annually via biannual grant process
- Support for essential infrastructure and community needs
- Leadership roles in local business associations and non-profits



Changing Business And Neighborhood



Site Context



PUBLIC GARDEN

BOSTON COMMON

ROSE KENNEDY GREENWAY

FAN PIER PARK

MARTIN'S PARK

WATERFRONT PARK

HARBORWALK

SEAPORT COMMON

SOUTH STATION

BOSTON TEA PARTY SHIPS & MUSEUM

CHINATOWN

FORT POINT

FORT POINT CHANNEL PARK

SOUTH BOSTON MARTIME PARK

90

93

FORT POINT CHANNEL

NECCO ST. PARK

WORMWOOD ST. PARK

SOUTH END

1200'

~31 ACRES

WATERFRONT

A ST. PARK

SOUTH BAY HARBOR TRAIL

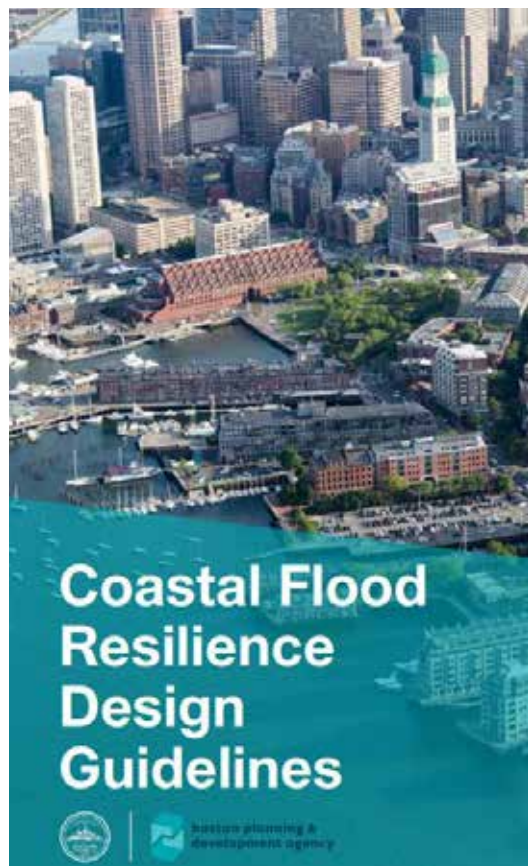
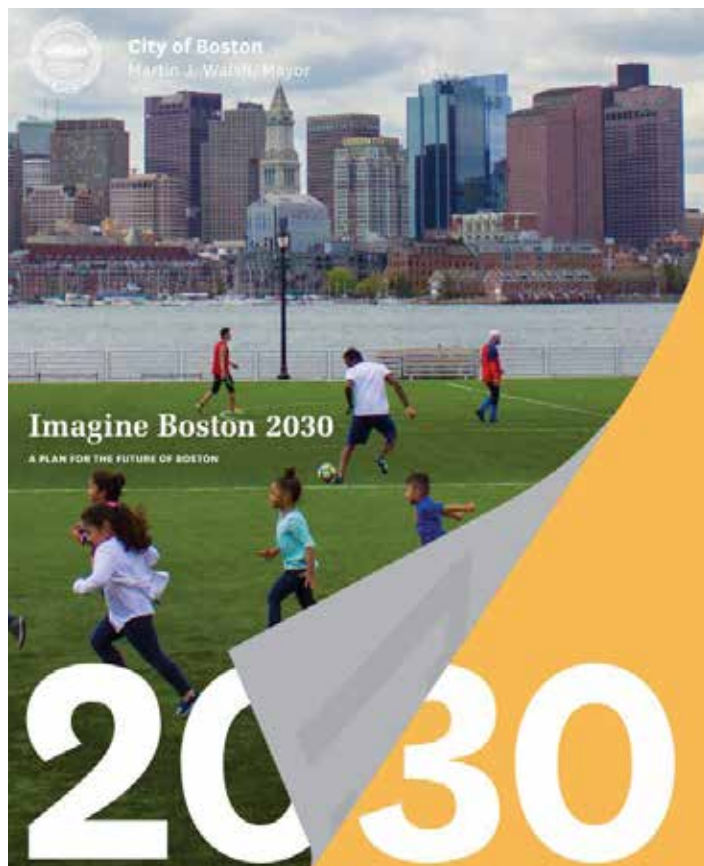
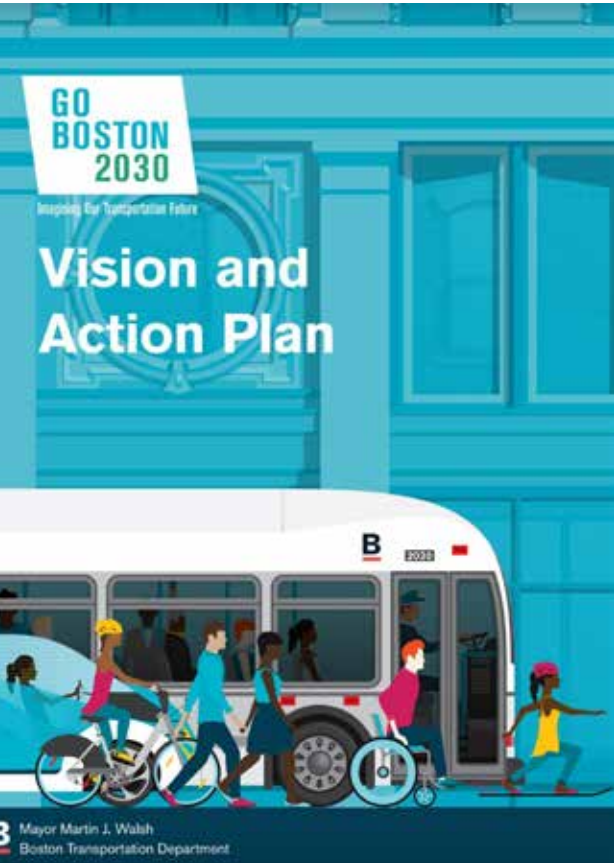
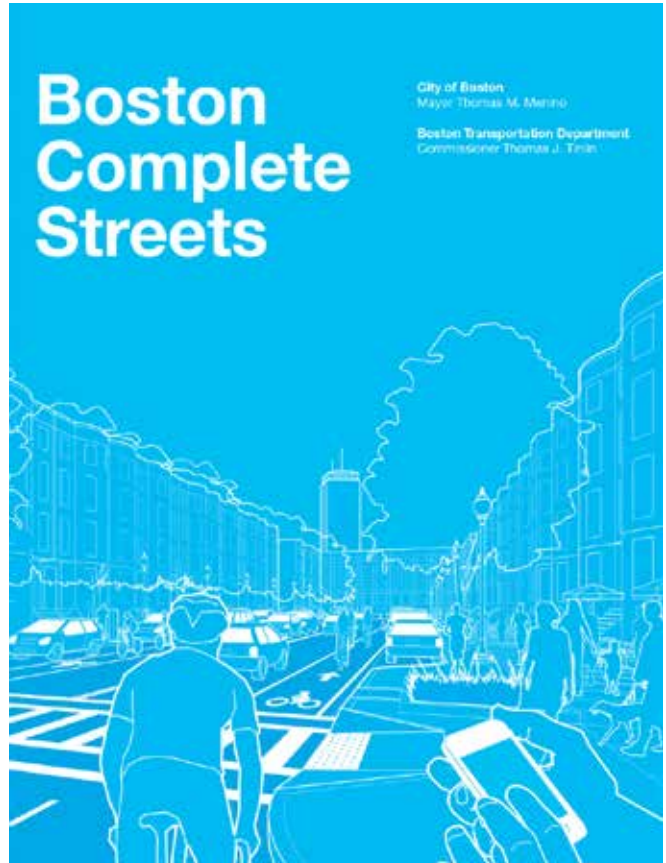
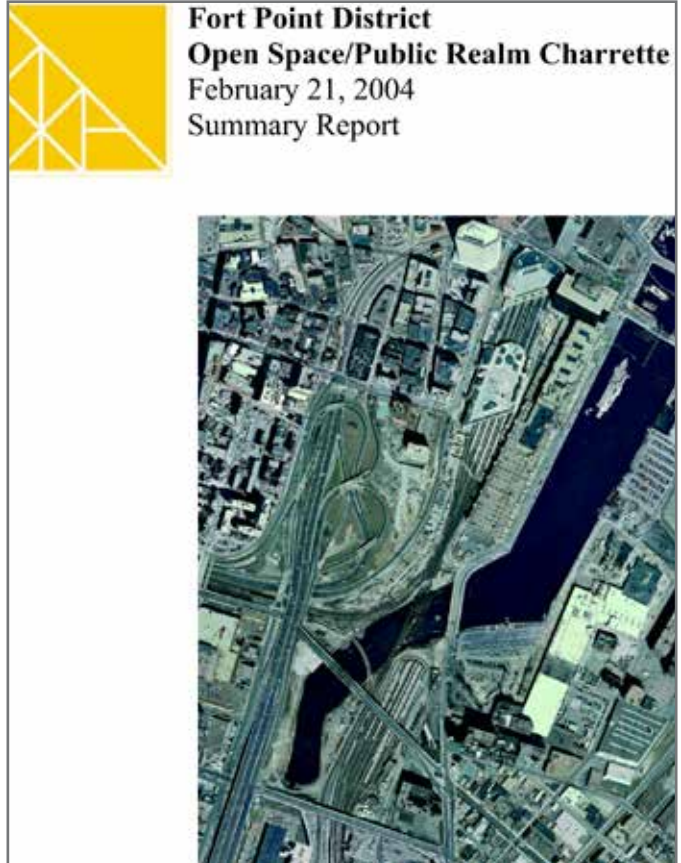
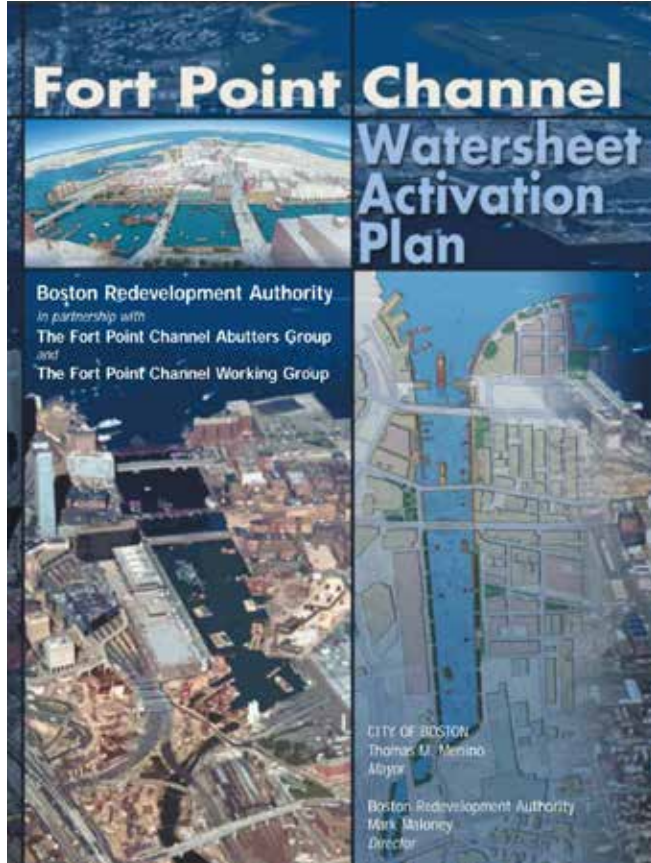
PETERS PARK

BROADWAY STATION

FLAHERTY PARK

SOUTH BOSTON

Opportunity : Advance Existing City Planning Efforts



Planning Together For The Future



Transform an industrial use into a **vibrant mixed-use community** that promotes housing and commercial development



Develop a **transit-oriented,** sustainable neighborhood



Improve circulation through the area



Facilitate significant **new job creation**

Planning Together For The Future



Better connect the **neighborhood to Fort Point Channel**



Generate **new tax revenue**, and linkage funds for affordable housing and workforce development



Promote a one-of-a-kind **waterfront** for Boston that is **resilient, playful & inclusive**



Create a **welcoming, accessible** and **equitable** city

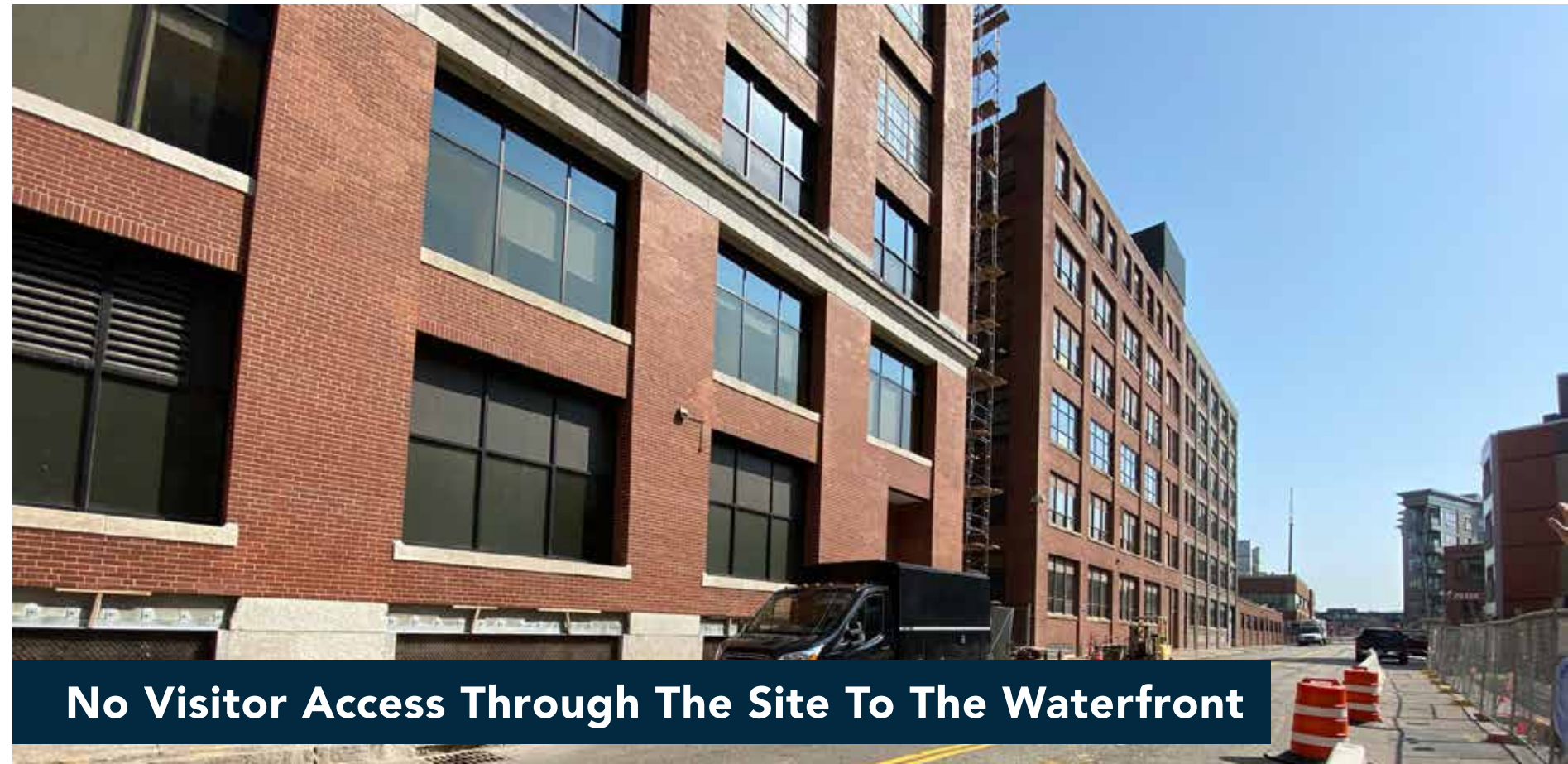
Challenge : Inaccessible Waterfront



Singular Industrial Use

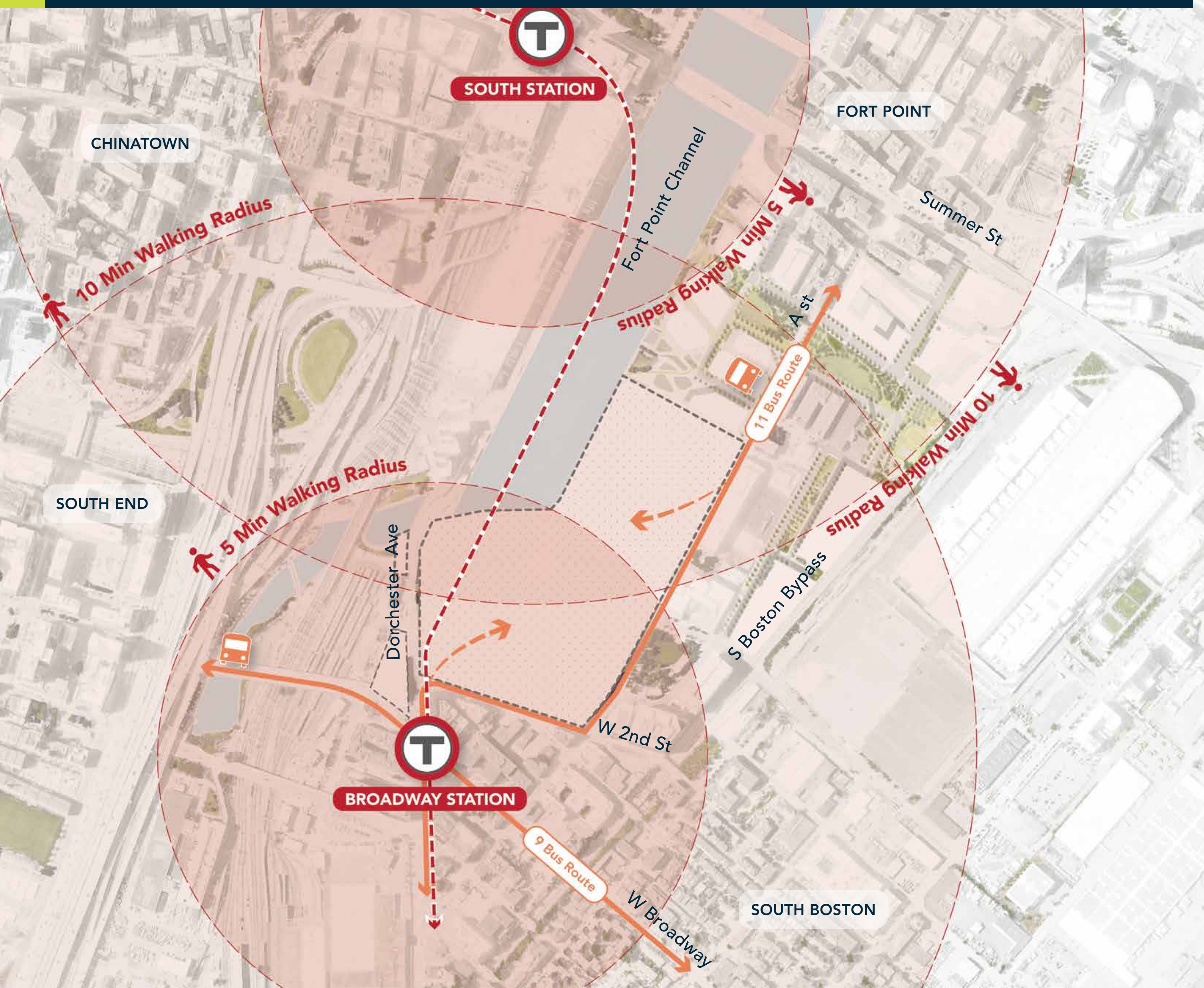


Limited Access To The Harbor Walk



No Visitor Access Through The Site To The Waterfront

Opportunity : Develop A Transit-Oriented, Sustainable Neighborhood



Improve Transit Connections Beyond The Site

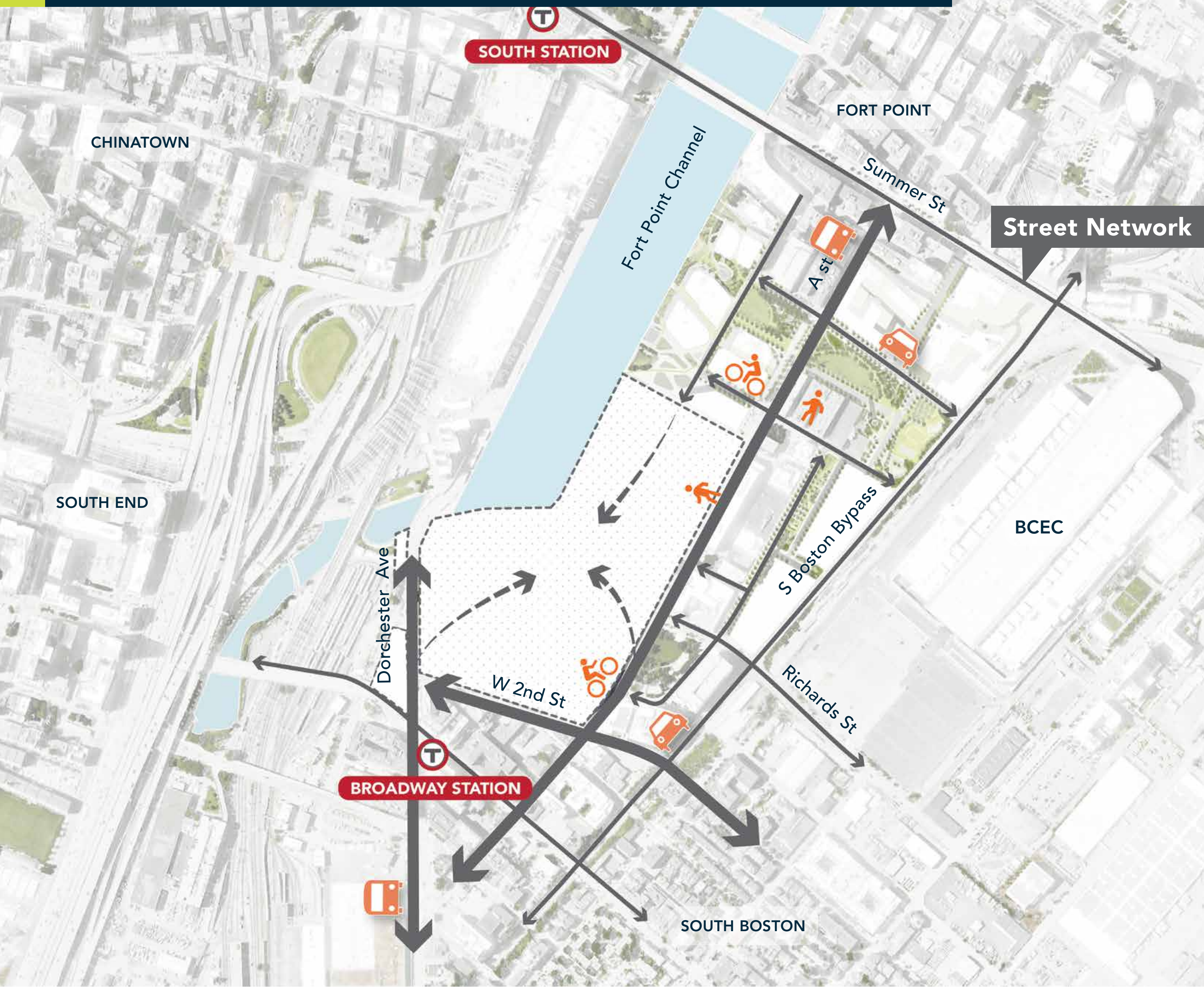


Reduce Car Dependence



Enhance Connections To Transit Stations

Opportunity : Improve Circulation Through The Area

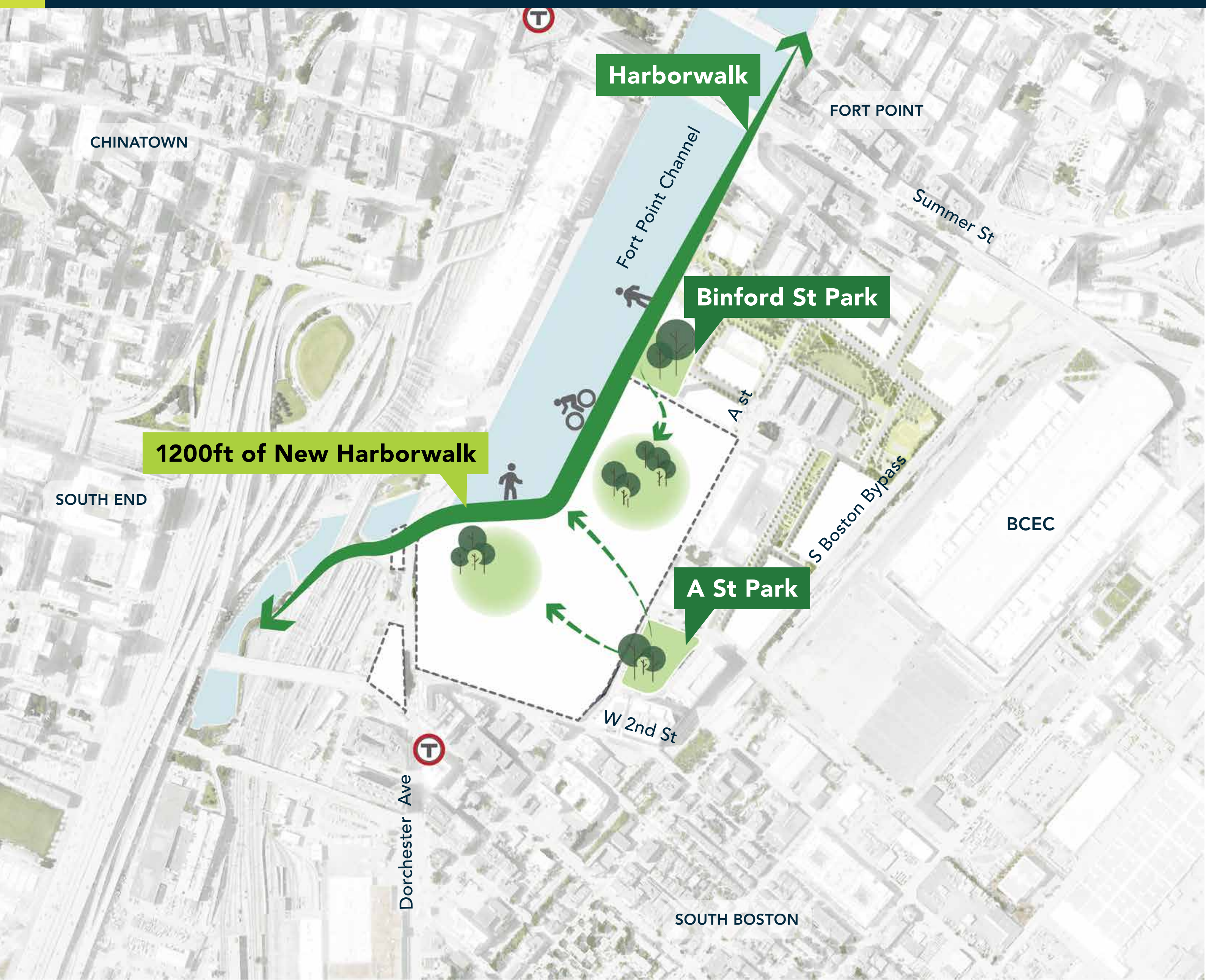


Design A Walkable-Bikeable Neighborhood



Plan for Complete Streets

Opportunity : Better Connect The Neighborhood To Fort Point Channel



Create View Corridors To The Waterfront

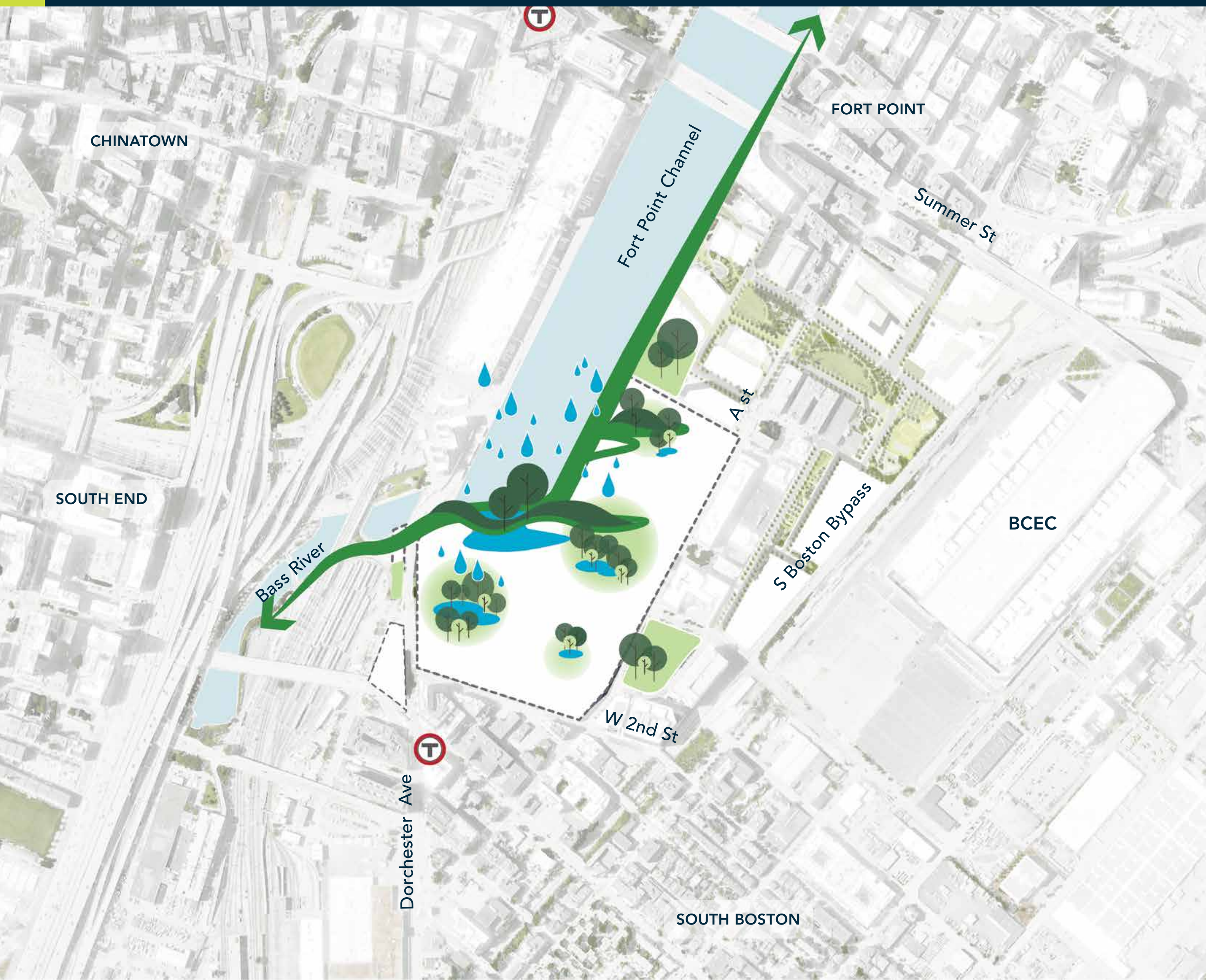


Leverage Opportunity For Watersheet Activation



Create Accessible Waterfront For All

Opportunity : Promote A One-Of-A-Kind Waterfront For Boston That Is Resilient, Playful & Inclusive



Expand Open Space Network



Design Nature-Based Solutions



Elevate The Site To Protect The Neighborhood

Opportunity : Transform An Industrial Use Into A Vibrant Mixed-Use Community



**Housing
Diversity**



**Economic
Development**



**Active
Ground
Floor Retail**



**Diverse
Community**



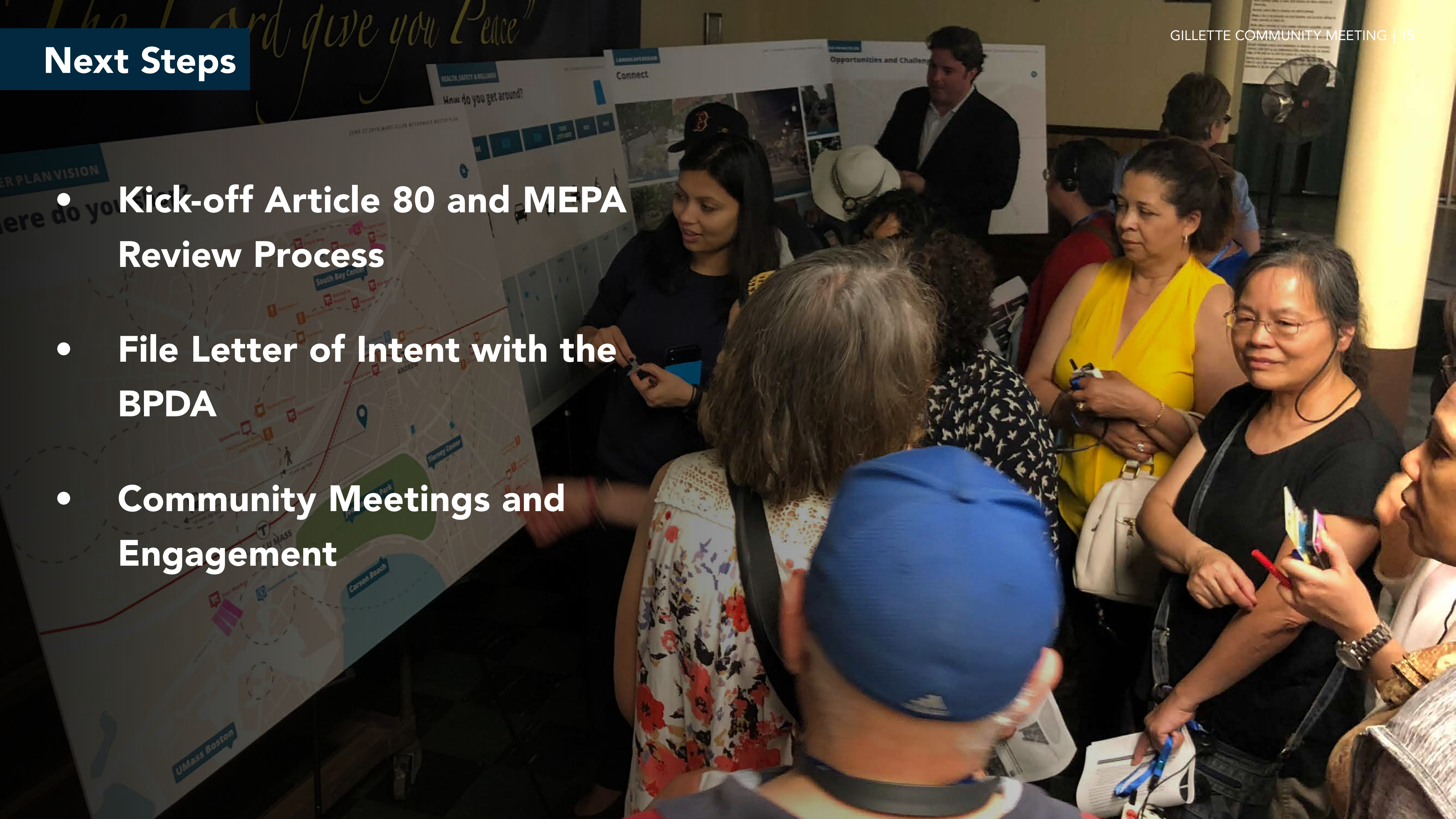
**New
Construction
Jobs**



**Accessible
Waterfront**

Next Steps

- **Kick-off Article 80 and MEPA Review Process**
- **File Letter of Intent with the BPDA**
- **Community Meetings and Engagement**



Thank You

Contact information

gillettecommunity.im@pg.com