



Meeting Agenda

Cypher Street Remediation Project

Date 1/11/2024

01 Opening Remarks

- Arthur Fritch

02 Project Presentation

- John Donahue
- Mike Cronan

03 Q&A Session



**MASSACHUSETTS
CONVENTION CENTER
AUTHORITY**



**HALEY
ALDRICH**



MASSACHUSETTS
CONVENTION CENTER
AUTHORITY

Petroleum Remediation at New Cypher Street

Michael J. Cronan, LSP
January 11, 2024



Agenda

1

Quick Review

2

Site Preparation

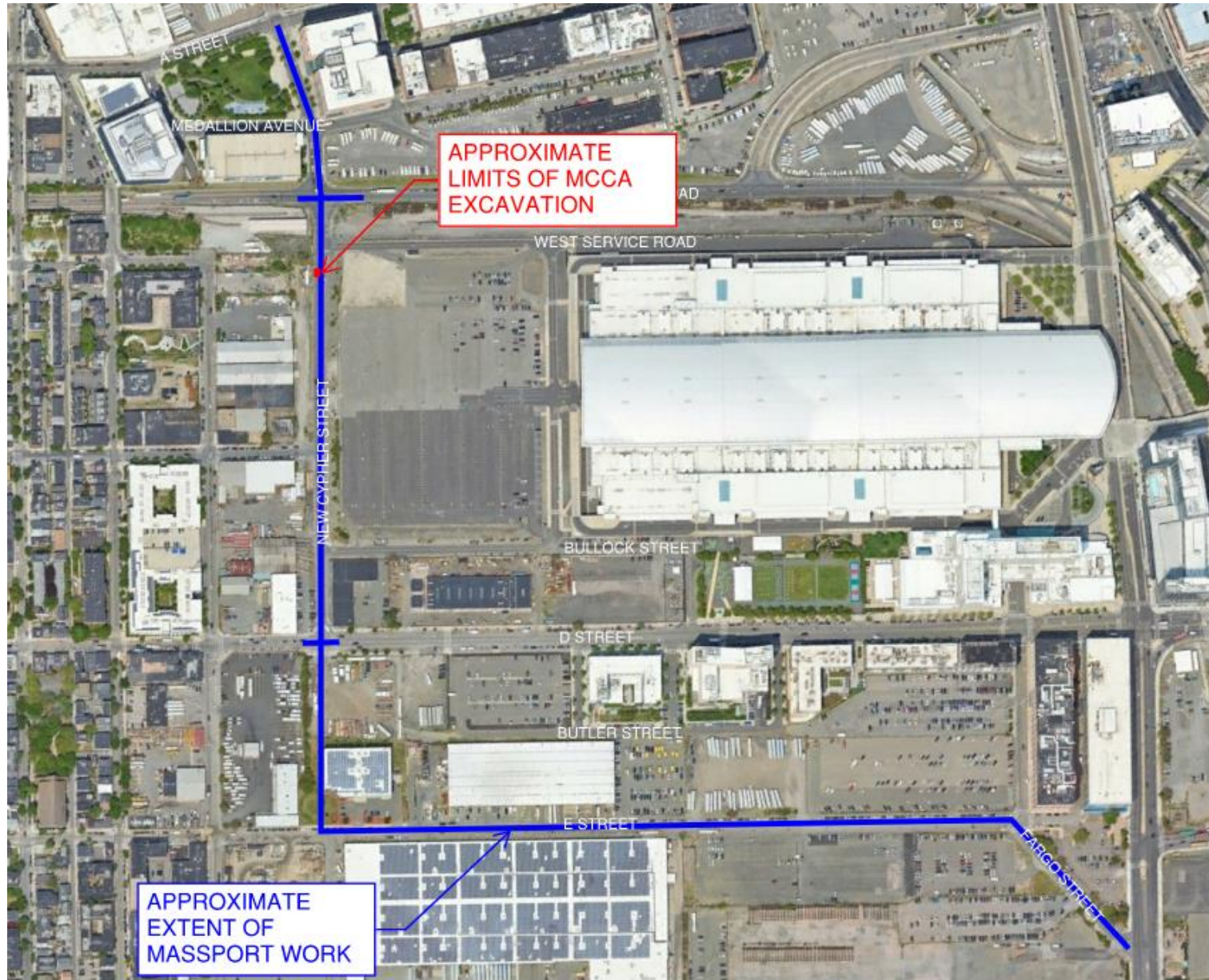
3

Takeaways from Last Meeting and Steps Taken

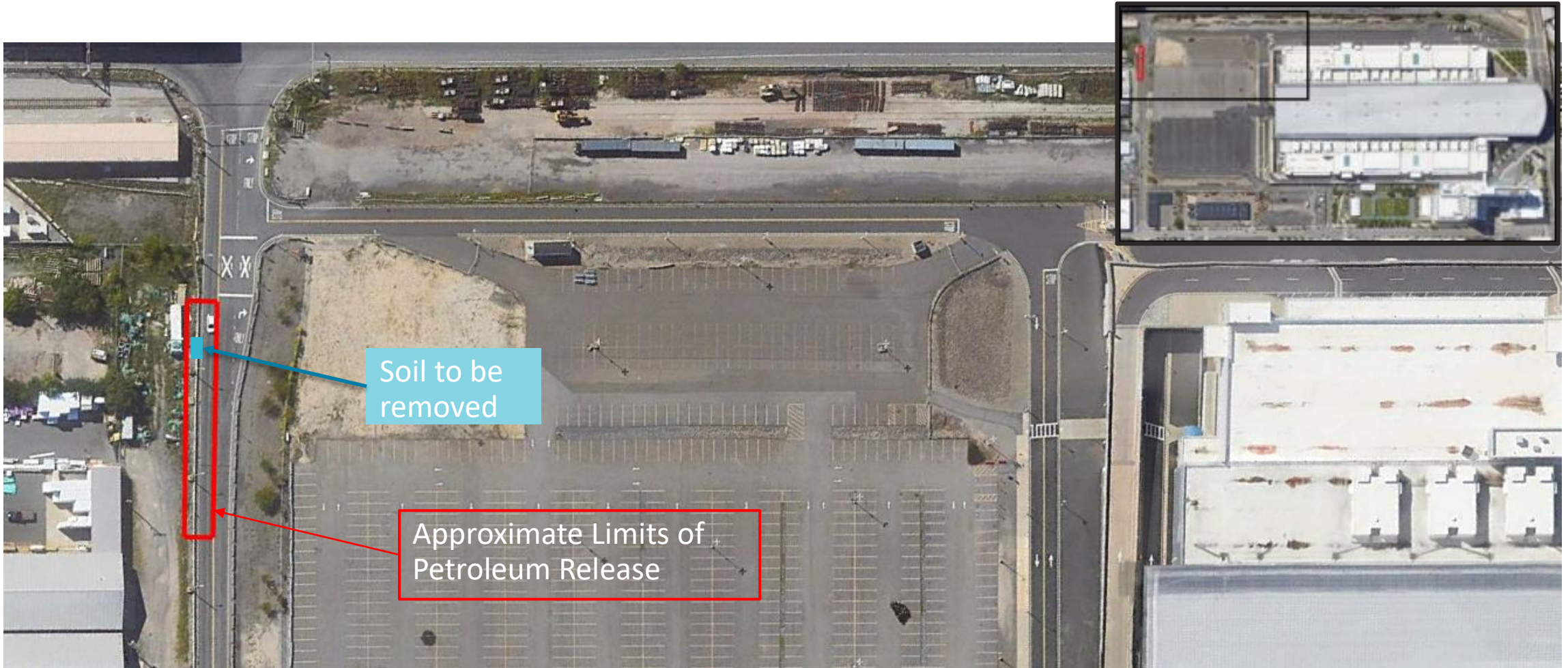
4

Questions

Location of MCCA and MassPort Work



Limits of Petroleum Release and Area to be Remediated



Key Takeaways from December Meeting

- Evaluate trucking option rather than rail to expedite the overall remediation process.
- Clarify MCCA's position on tree plantings along Cypher Street

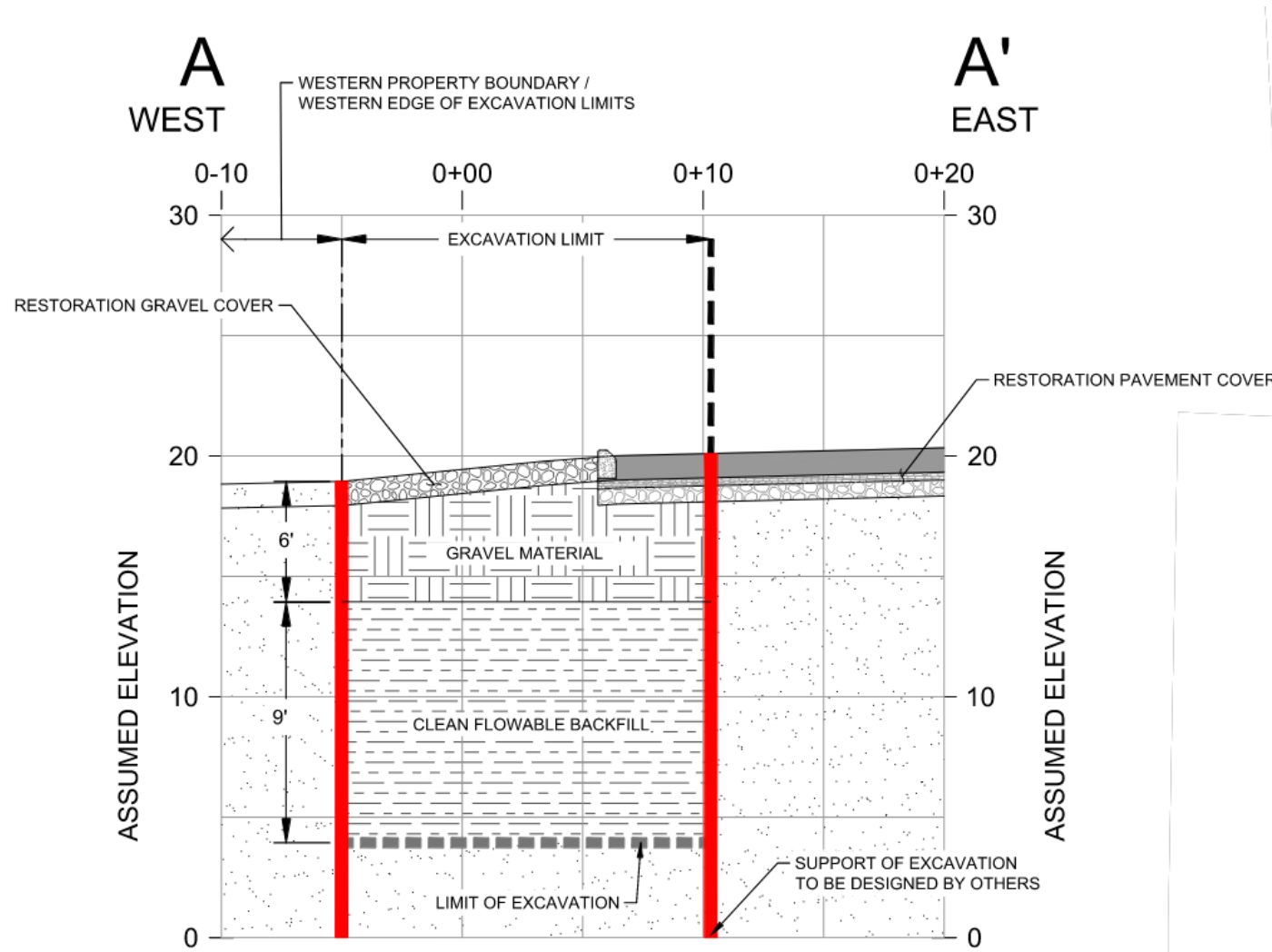
Comparison of Trucking vs Rail

Item	Rail	Truck
Tons per Truck	36	36
Truck Loads per Day	3 to 6 (depends on gondola availability)	6 to 8+
Total Truck Loads	10 to 12	10 to 12
Duration of Mass Excavation and Hauling	2 to 5 days	2 to 3 days
Risks	Weather, Gondola availability	Weather
Overall Duration	Approx 7 to 10 days	Approx. 7 to 8 days
Cost for Hauling	Base Cost	+\$33,300

Comparison of Trucking vs Rail

Item	Rail	Truck
Tons per Truck	36	36
Truck Loads per Day	3 to 6 (depends on gondola availability)	6 to 8+
Total Truck Loads	10 to 12	10 to 12
Duration of Mass Excavation and Hauling	2 to 5 days	2 to 3 days
Risks	Weather, Gondola availability	Weather
Overall Duration	Approx 7 to 10 days	Approx. 7 to 8 days
Cost for Hauling	Base Cost	+\$33,300

Restoration



Conceptual Schedule*

- Day 1 - Set up decontamination station, wheel wash, and dewatering system. Mobilize excavation support system.
- Days 2 to 4 - Mass excavation and off-site disposal of soil (10 to 12 trucks), installation of excavation support system, and construction dewatering.
- Days 5 and 6 - Backfill excavation with flowable fill to 6 ft below grade
- Day 7 - Backfill excavation with gravel to match surrounding ground surface. Remove and decontaminate excavation support system. Remove wheel wash and dispose of wheel wash (1 truck).
- Day 8 – Demobilize equipment

* Days may shift depending on weather and other factors. Some equipment may take longer to demobilize.

Questions?