



MASSACHUSETTS
CONVENTION CENTER
AUTHORITY

Petroleum Remediation at New Cypher Street

Michael J. Cronan, LSP
November 2, 2023



Agenda

1 Regulatory Setting and Background

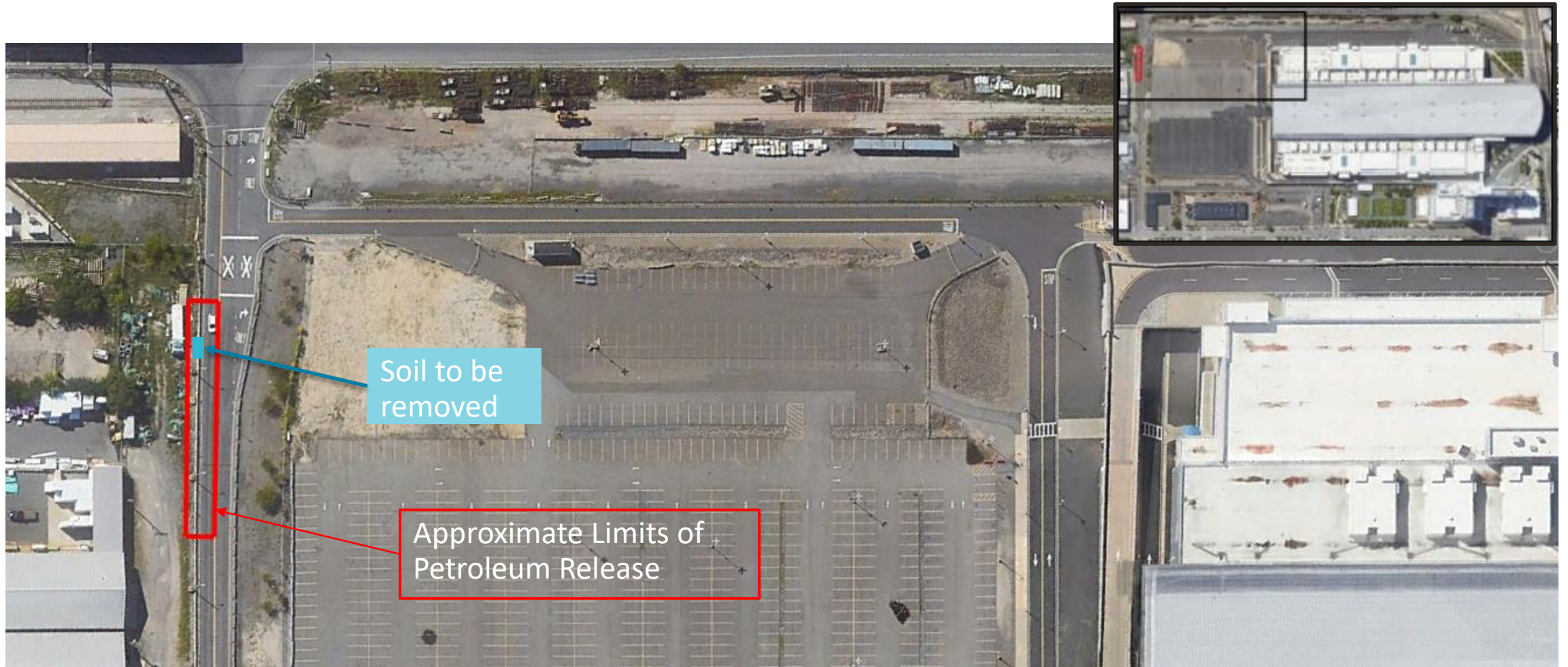
2 Why Remediate?

3 Remediation Overview

4 Remediation Safety Considerations

5 Questions

Limits of Petroleum Release and Area to be Remediated



1969 Aerial Photo of Boston Convention & Exhibition Center Property



Regulatory Setting

- US Environmental Protection Agency (EPA)
 - Soil disposal is regulated under the EPA's Toxic Substances Control Act (TSCA) due to its location within the historic polychlorinated biphenyl (PCB) release attributed to historic junk yard.
 - Located beneath the existing EM-1 Cap, which is required to be maintained per the 2017 remediation program that addressed PCBs to satisfaction of EPA.
 - Notification of petroleum remediation provided to EPA in 2022 and approved.
- Massachusetts Department of Environmental Protection (MassDEP)
 - Regulated under the Massachusetts Contingency Plan (MCP.)
 - Reported to MassDEP in 2017.
 - Remediation Plan submitted to MassDEP in 2023. No MassDEP approval required.

Background

- 2015 – Petroleum identified during investigations to support planned remediation of PCBs and then-planned Phase 2 Expansion.
- 2016 – Petroleum compounds detected at concentrations higher than allowed to remain in place (Upper Concentration Limits (UCLs) by the state environmental regulations (Massachusetts Contingency Plan [MCP]).
- 2018 – Performed investigation to evaluate source and extent of petroleum.
 - The source of the petroleum is attributed to the historical railroad operations and a salvage and junk yard.
- 2021 – Performed investigations to support design of a remediation program on MCCA property.

Background

- 2022
 - Evaluated remedial options.
 - Selected excavation to achieve closure under the MCP.
 - Bid and awarded remediation project awarded to McCourt Construction.
- 2023 – Delayed implementation of remediation to coincide with MassPort construction activities.

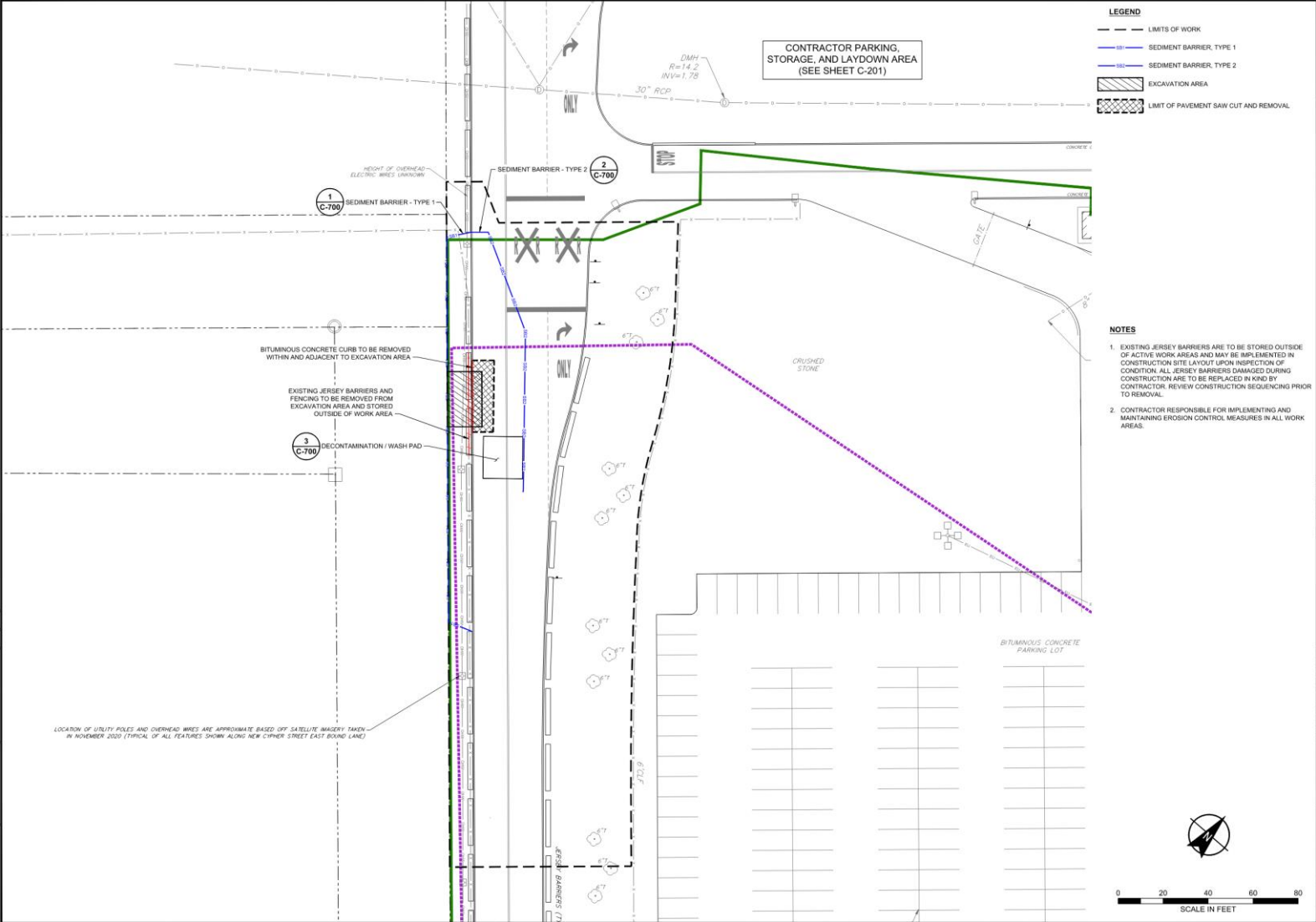
Why Remediate?

- Concentrations of petroleum related constituents in soil exceed the Upper Concentration Limits established by the MCP.
- Groundwater has not been significantly impacted by the release.
- The MCP evaluates risk compared to human health, public welfare, safety, and the environment.
 - Site does not exceed risk levels for human health for its current and future use as a roadway or for safety.
 - Site exceeds risk levels for public welfare and the environment due to petroleum compounds exceeding Upper Concentration Limits
- Remediating to reduce risk to public welfare and the environment as required by the MCP.

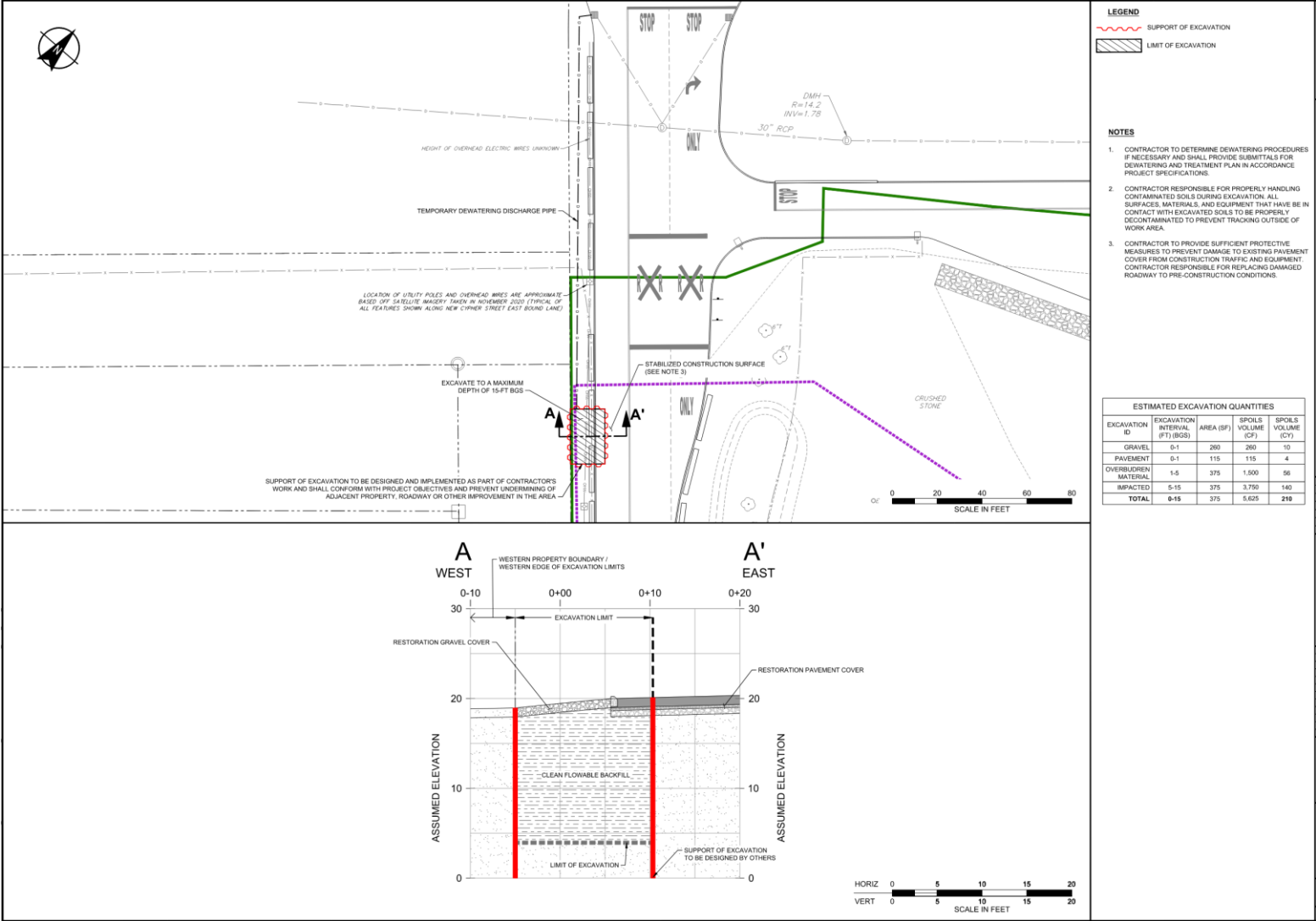
Remediation Overview

- Remediation being conducted in accordance with TSCA and MCP.
- Excavation of an approximately 350 square foot area to a depth of about 15 ft below ground surface.
- Soil will be disposed of at a licensed hazardous waste landfill.
- Backfill excavation with excavatable flowable fill which will serve as replacement for the existing EM-1 Cap.
- Duration of work is about 3 weeks.

Site Preparation



Remediation Area



Remediation Safety Considerations

- Access to the site is restricted by perimeter fencing.
- The Contractor will work under a Site-Specific Health & Safety Plan that is protective of workers and surrounding populations.
- Soil will be live-loaded onto trucks to eliminate stockpiling of contaminated soil.
- Wheel wash will be used to wash truck tires prior to leaving New Cypher Street to mitigate potential spread of contamination to public roads.
- Trucks will exit the site to the Haul Road.

Remediation Safety Considerations

- Continuous monitoring of ambient air for potential volatile organic compounds (VOCs or vapors).
- Dust monitors will be placed upwind and downwind of the excavation to continuously measure particulates with action level alerts.
- Contractor will employ dust/vapor mitigation measures as necessary based on results of monitoring.

Questions?