
Cypher / E Street Improvements

Pre - Construction

Public Informational Meeting

August 16, 2023



massachusetts port authority



Cypher / E Street Improvements – Outreach to date

- November 13, 2018 - 25% Design Public Hearing (MassDOT)
- January 29, 2019 - Fort Point Neighborhood Assoc Meeting (MassDOT)
- April 2, 2019 - St Vincent's Neighborhood Assoc Meeting (MassDOT)
- February 7, 2023 - St Vincent's Neighborhood Assoc Meeting (Massport)
- March 2, 2023 - South Boston Informational (Massport)
- March 23, 2023 - South Boston Informational Meeting (Massport)
- May 25, 2023 - Public Improvement Commission Hearing
- August 16, 2023 - Today South Boston Informational Meeting (Massport)
- September - Future South Boston Informational Meeting (Massport)

Cypher / E Street Improvements – Agenda

- Introductions
- Project Scope
- Construction Schedule
- Construction Phasing
- Truck Routes / Traffic Detour
- Dust Monitoring/Mitigation Plan
- Massport Additional Safety Initiatives



Cypher / E Street Improvements – Project Scope

- **Richards Street** – New bicycle / pedestrian facilities
- **Cypher Street** – Roadway reconstruction including new sidewalks, roadway, bicycle facilities (to D Street) & utilities
- **Cypher Street (D Street to E Street)** – New roadway construction, sidewalks & utilities
- **E Street** – Milling/ Repaving (Asphalt Surface Restoration)
- **Fargo Street** – Roadway reconstruction including new sidewalks, roadway surface & utilities



Cypher / E Street Improvements – Project Team

Community Groups



SVLENA



Nitsch Engineering
Project Design Lead



Safety



TETRA TECH
LSP/ Environmental
Services



Resident Engineering



General Contractor



Contractor LSP



D.W. White Project Team

D.W. White has been family owned and operated since 1962, and has been at the forefront of bridge, roadway, large earth-moving projects, shopping center and retail site developments. Located in Acushnet, MA, D.W. White is “250 employees strong” and proudly owns one of the largest fleets of equipment in New England.



Mark White

- President

Stephen Cobb

- Project Executive

Zach Mangelson

- Project Manager

Craig Bateman

- Superintendent

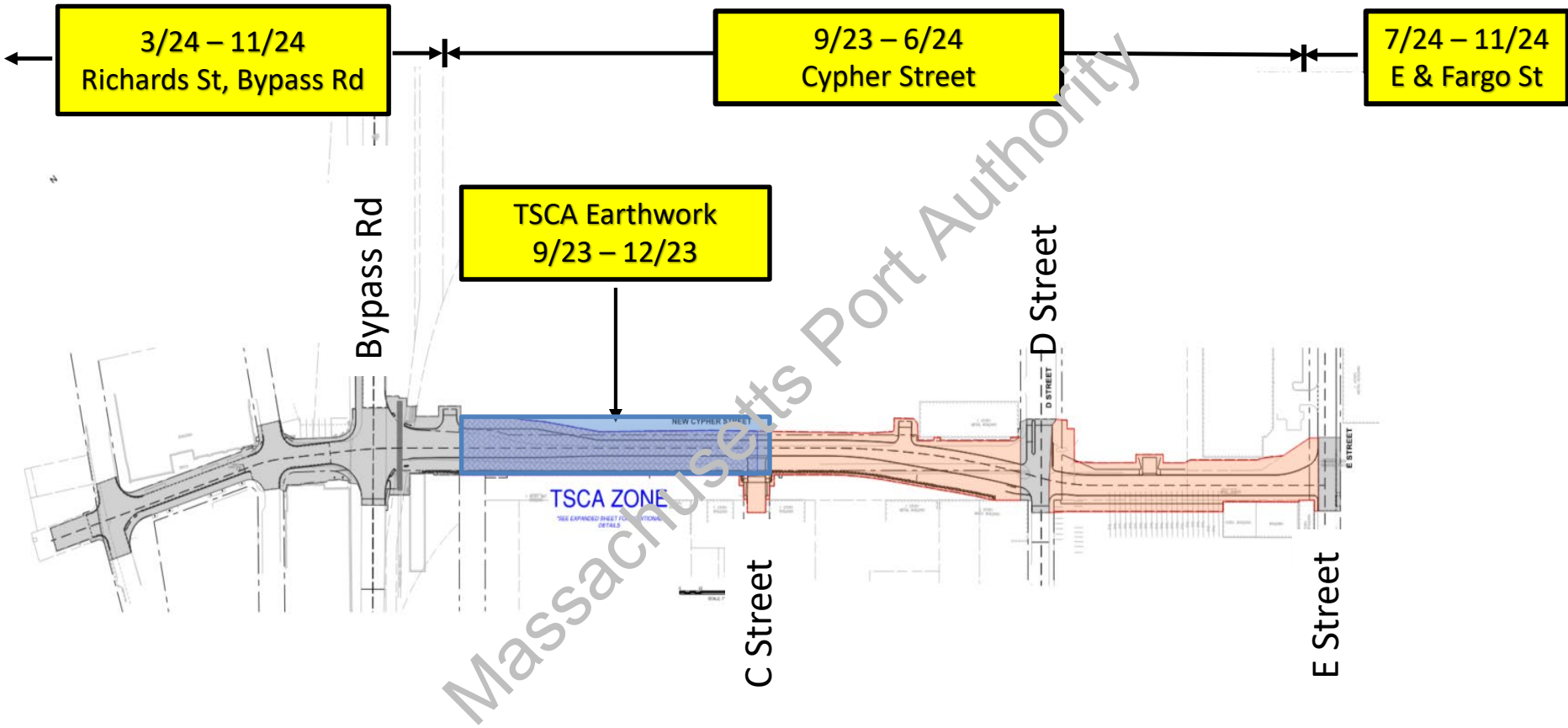
Ryan DeFlaminis

- Field Engineer

Cypher / E St Improvements – Construction Schedule

- **8/21/23 – 9/1/23:** Mobilization (Install Signs, Fencing, Office Trailer, Equipment/material delivery)
- **9/5/23:** Close Cypher St and Commence Construction
- **Nov 2023:** Intermediate Paving of Cypher St
- **March 2024:** Start work Richards St, South Boston Bypass
- **June 2024:** Cypher St re-open to Traffic.
- **July 2024:** Start work Fargo St
- **Nov 2024:** Complete Richard St, South Boston Bypass & Fargo Streets
- **Spring 2025:** Final Paving / Line Striping

Construction Schedule Overview



Construction Schedule – Upcoming Mobilization Activities

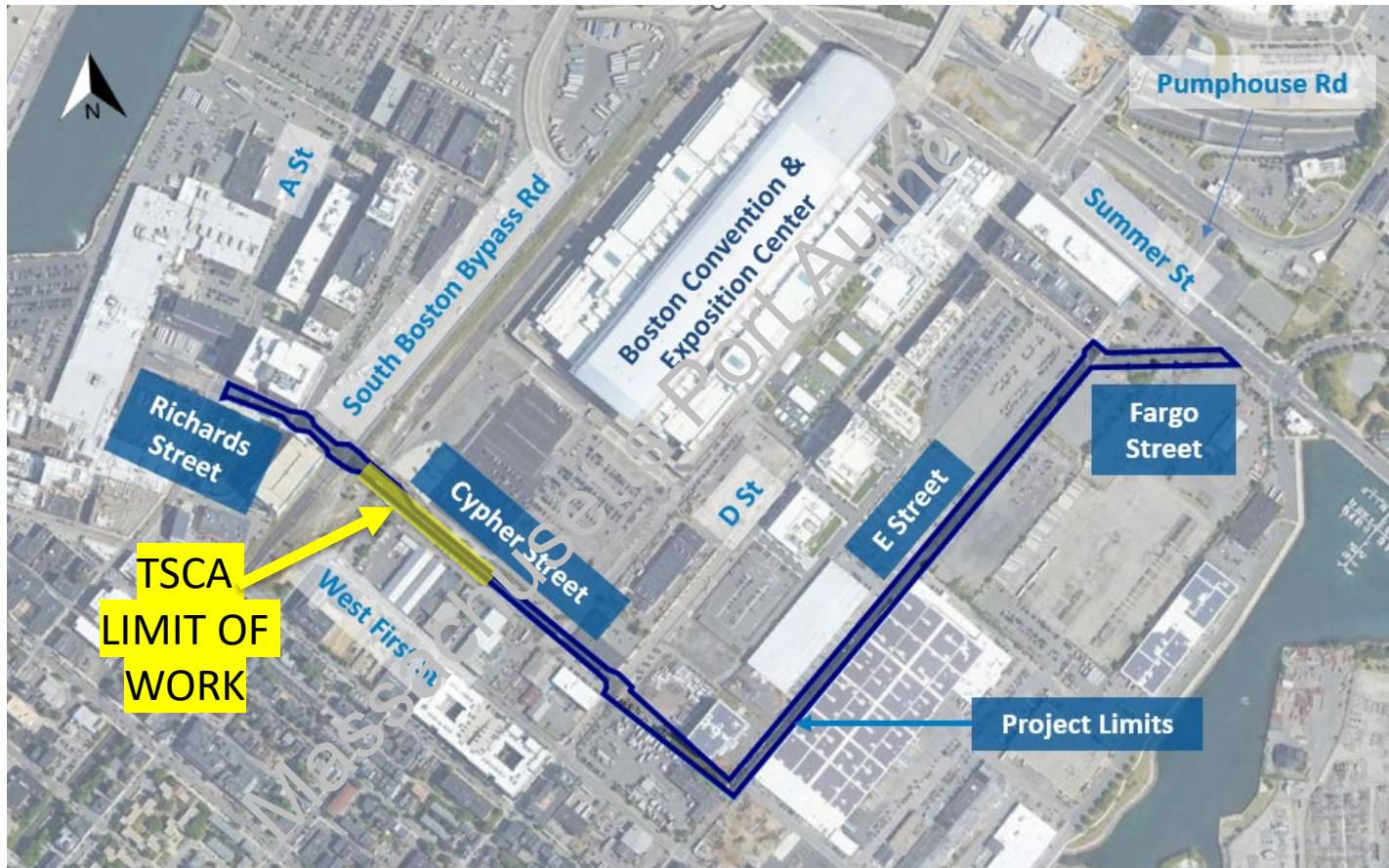
Mobilization Activities – Starting 8/21/23:

- Office Trailer Delivery & Setup
- Equipment & Materials Delivery
- Installation of detour signage (signs will be covered)
- Installation of construction fencing & dust screens
- Installation of erosion controls
- Cypher St to be closed starting 9/5/23
- Cypher TSCA work zone will be secured via. gates and locks

TSCA Construction Activities to commence 9/5/23

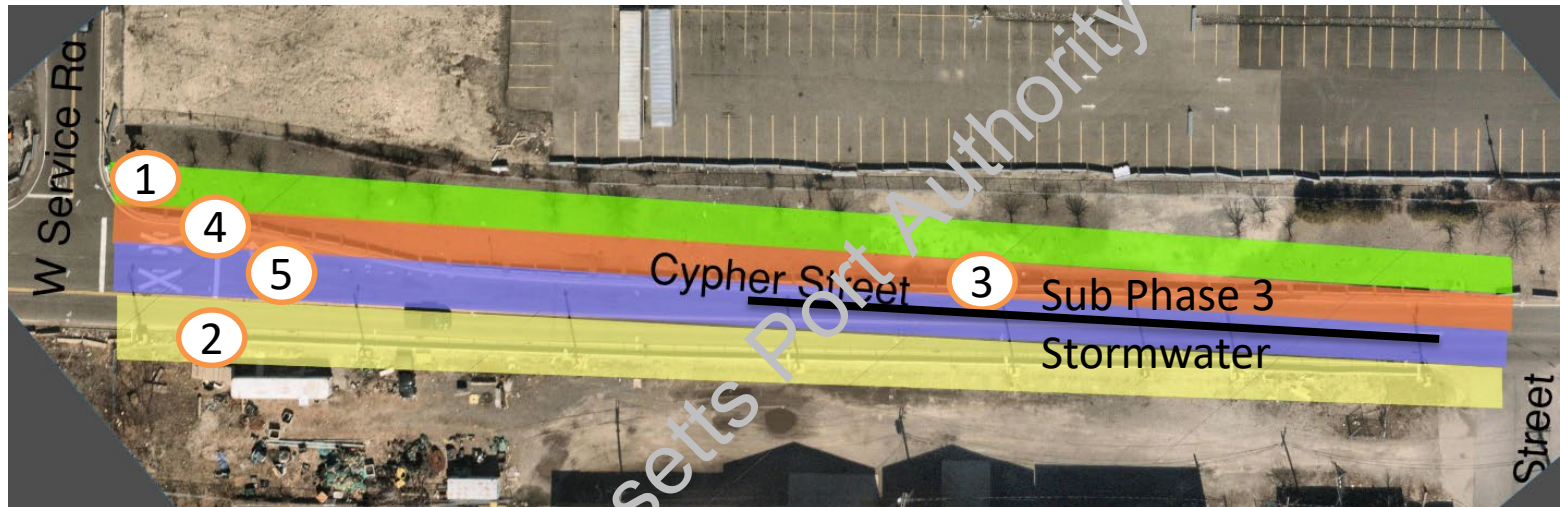
- Construction weekdays 7am-5pm

Cypher / E Street Improvements – TSCA Limit of Work



Construction Schedule Overview – TSCA Sub Phase

TSCA Area Sub Phases: work will be conducted one strip area at a time to control site

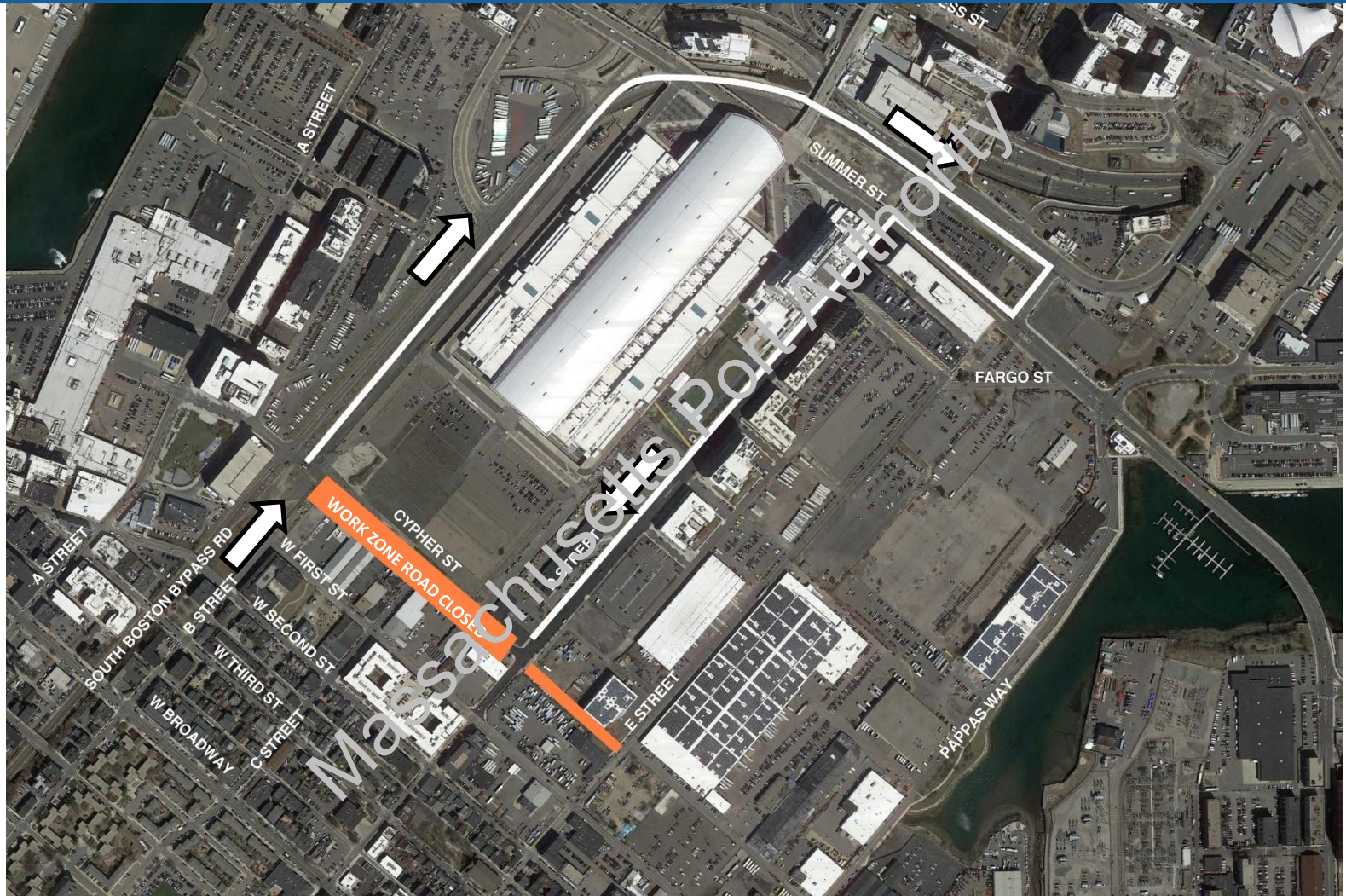


Activities for each sub-phase:

- Excavate Subgrade
- Install construction fabric layer
- Install Street Lighting System
- Install new Roadway elements
- Excavate Roadway to Subgrade
- Install New, Clean Fill & Gravel
- Install Base Pavement

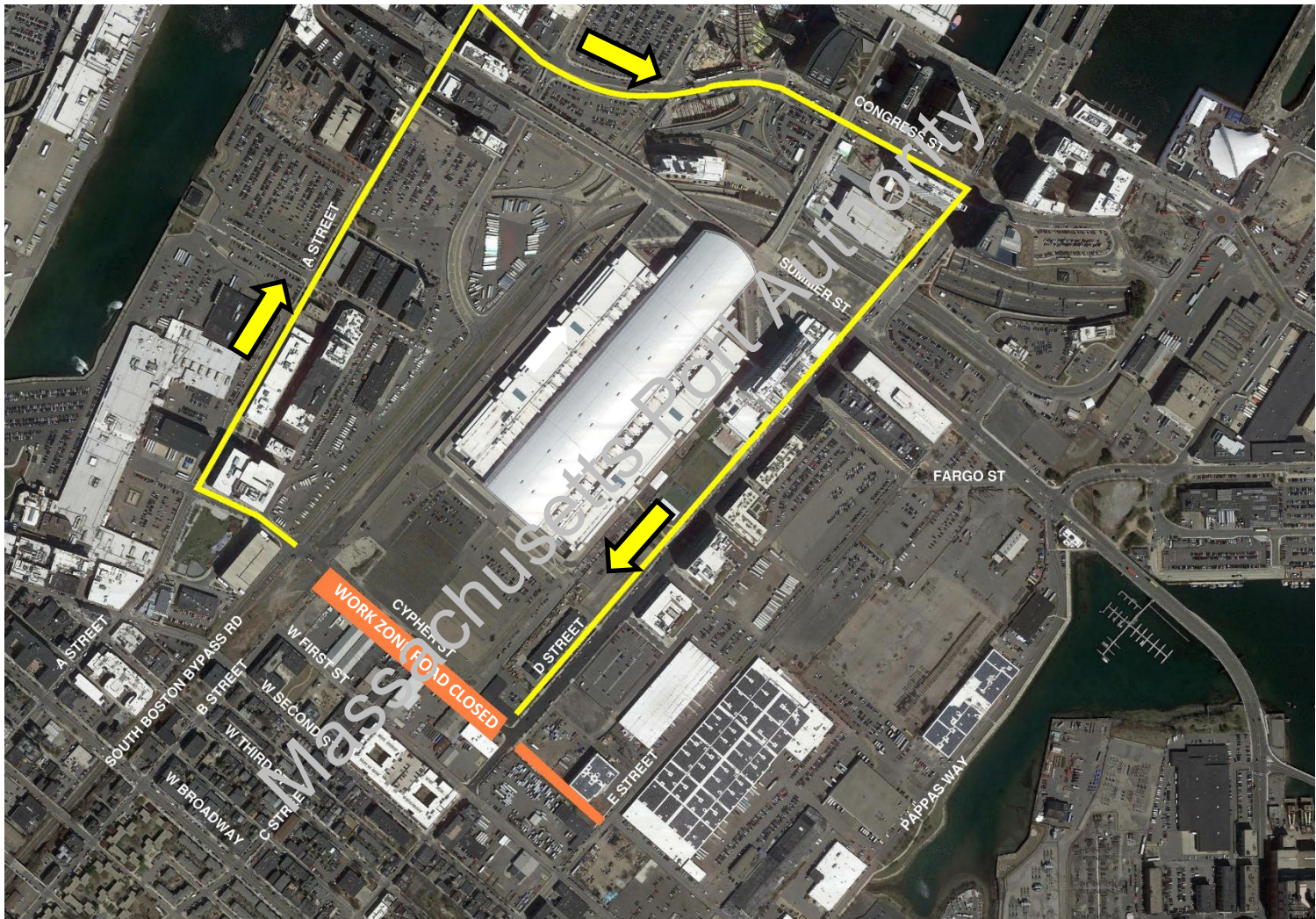
Project will NOT leave any area of TSCA soil exposed overnight

Cypher / E St Improvements – Traffic Detour Cypher Closed General Traffic – Not construction trucking

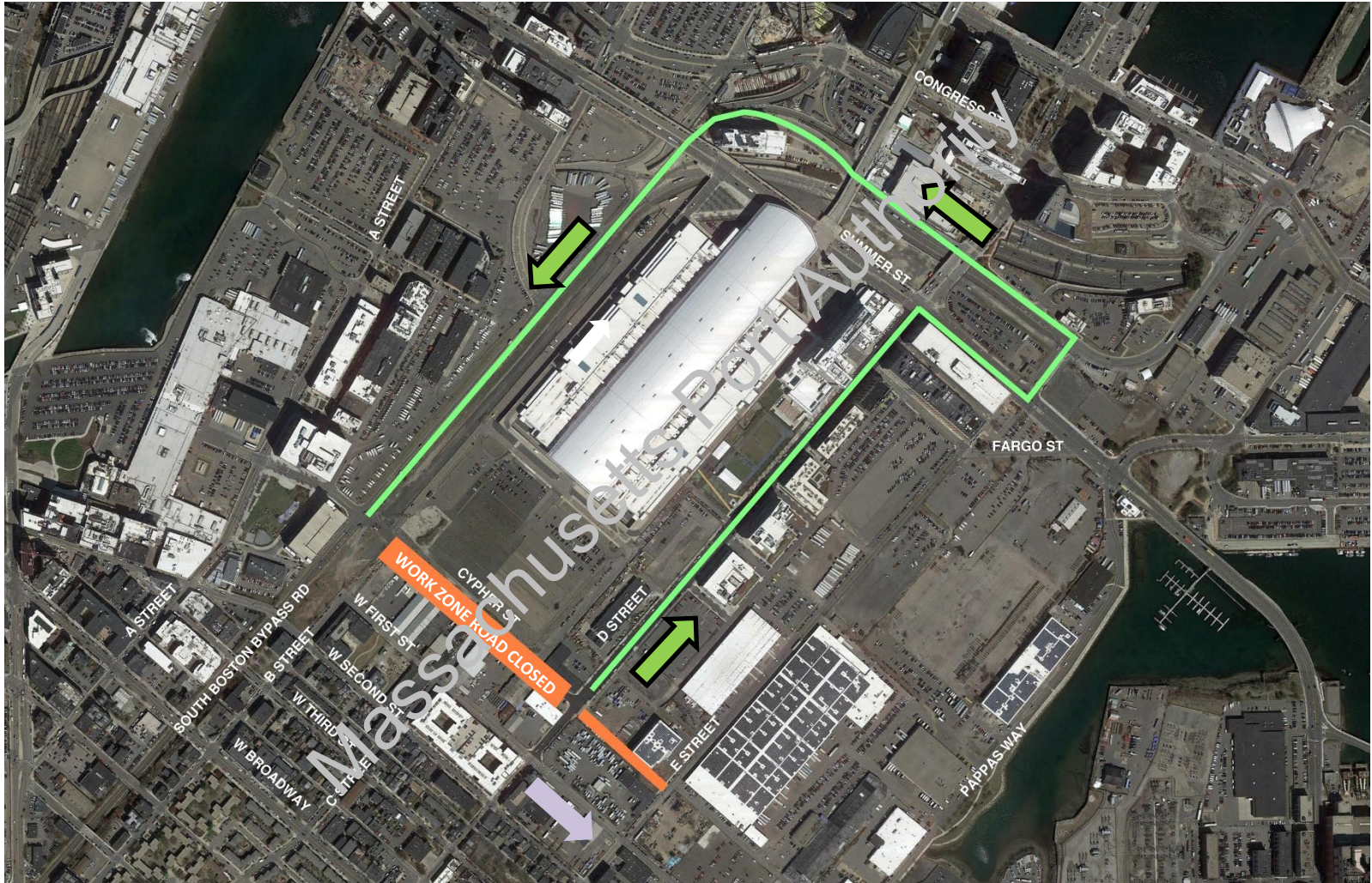


Cypher / E St Improvements – Traffic Detour Cypher Closed

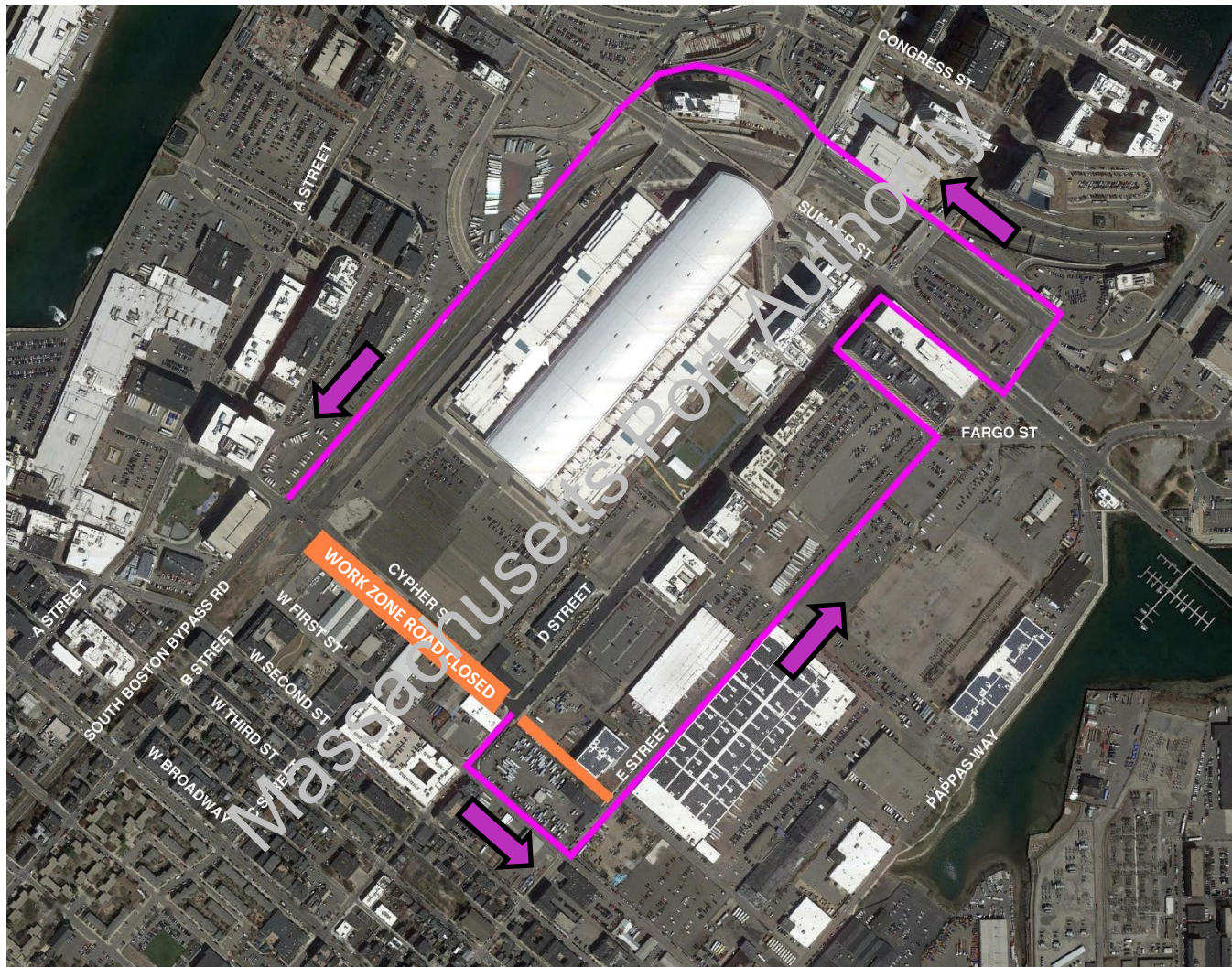
General Traffic – Not construction trucking



Cypher / E St Improvements – Traffic Detour Cypher Closed General Traffic – Not construction trucking

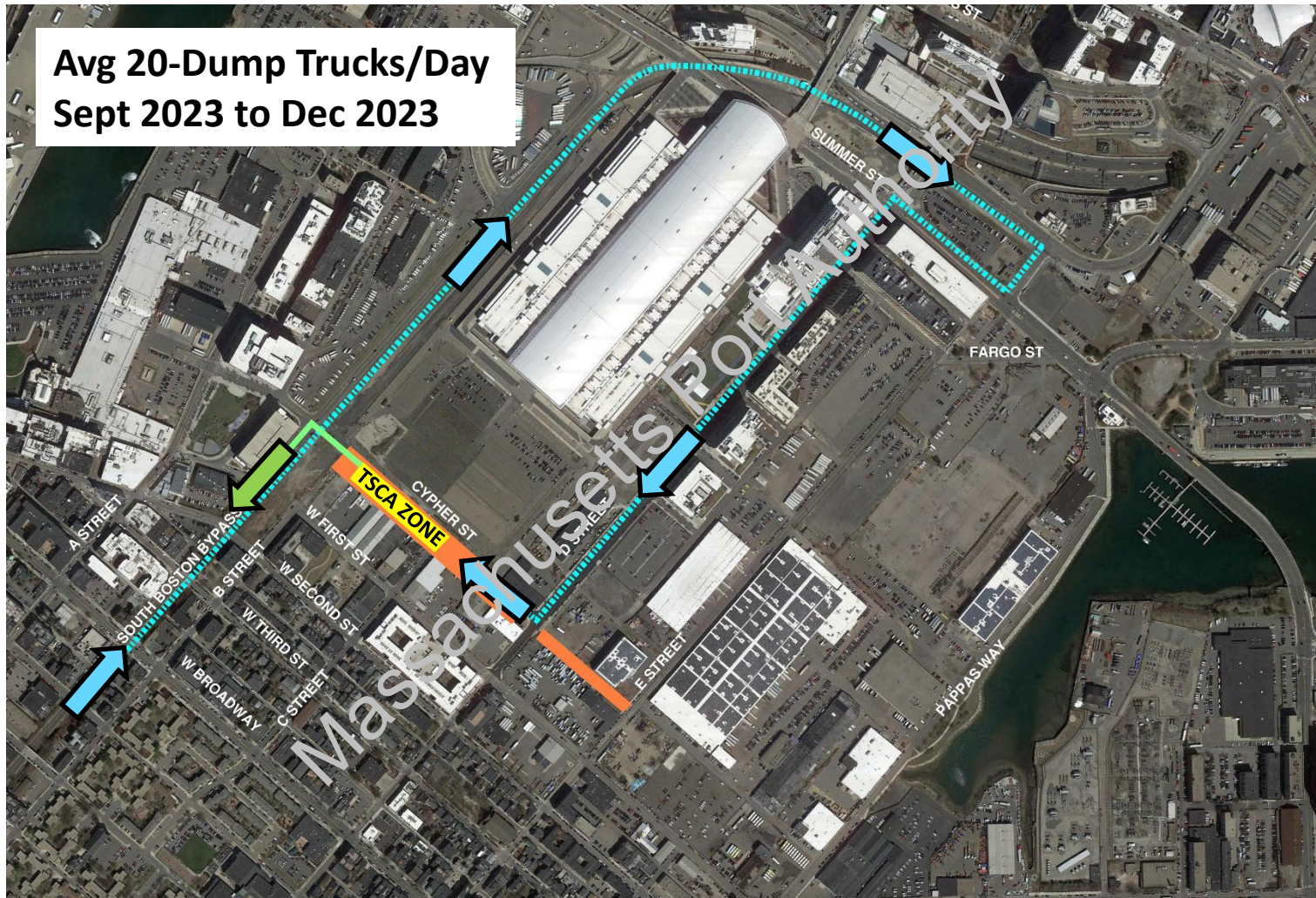


Cypher / E St Improvements – Traffic Detour Cypher Closed General Traffic – Not construction trucking

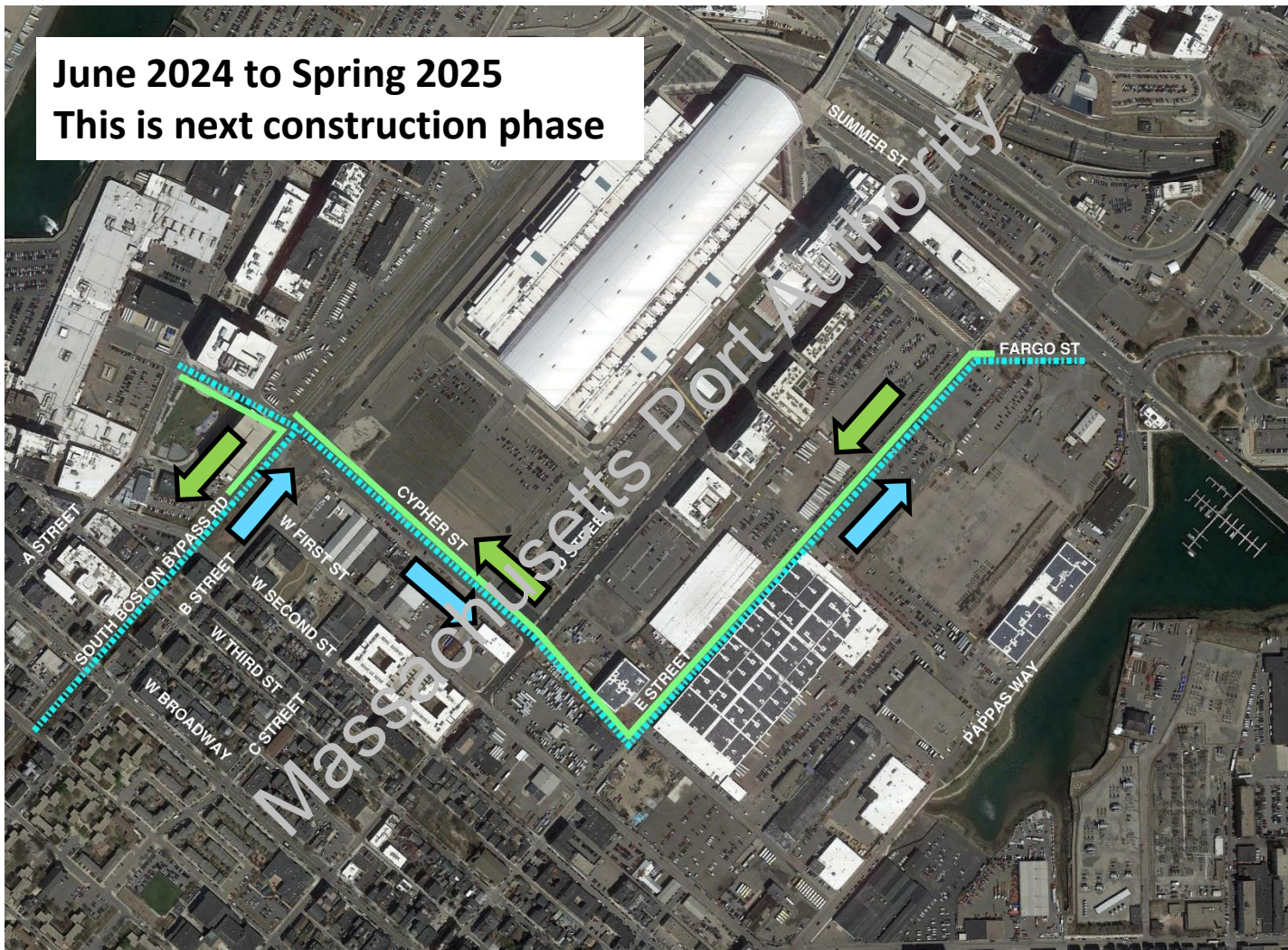


TSCA Area Construction Truck Route 9/23 – 12/23

Avg 20-Dump Trucks/Day
Sept 2023 to Dec 2023



Post Cypher Closure - Truck Route (6/24 – Spring 2025)



Dust Monitoring Program



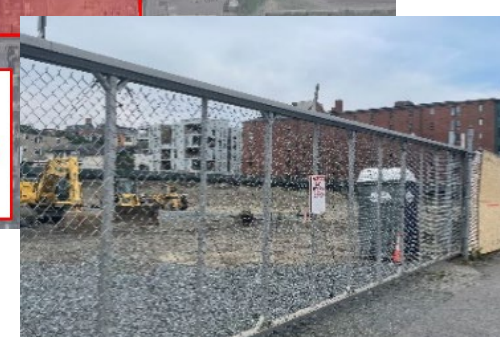
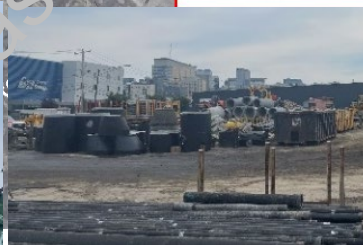
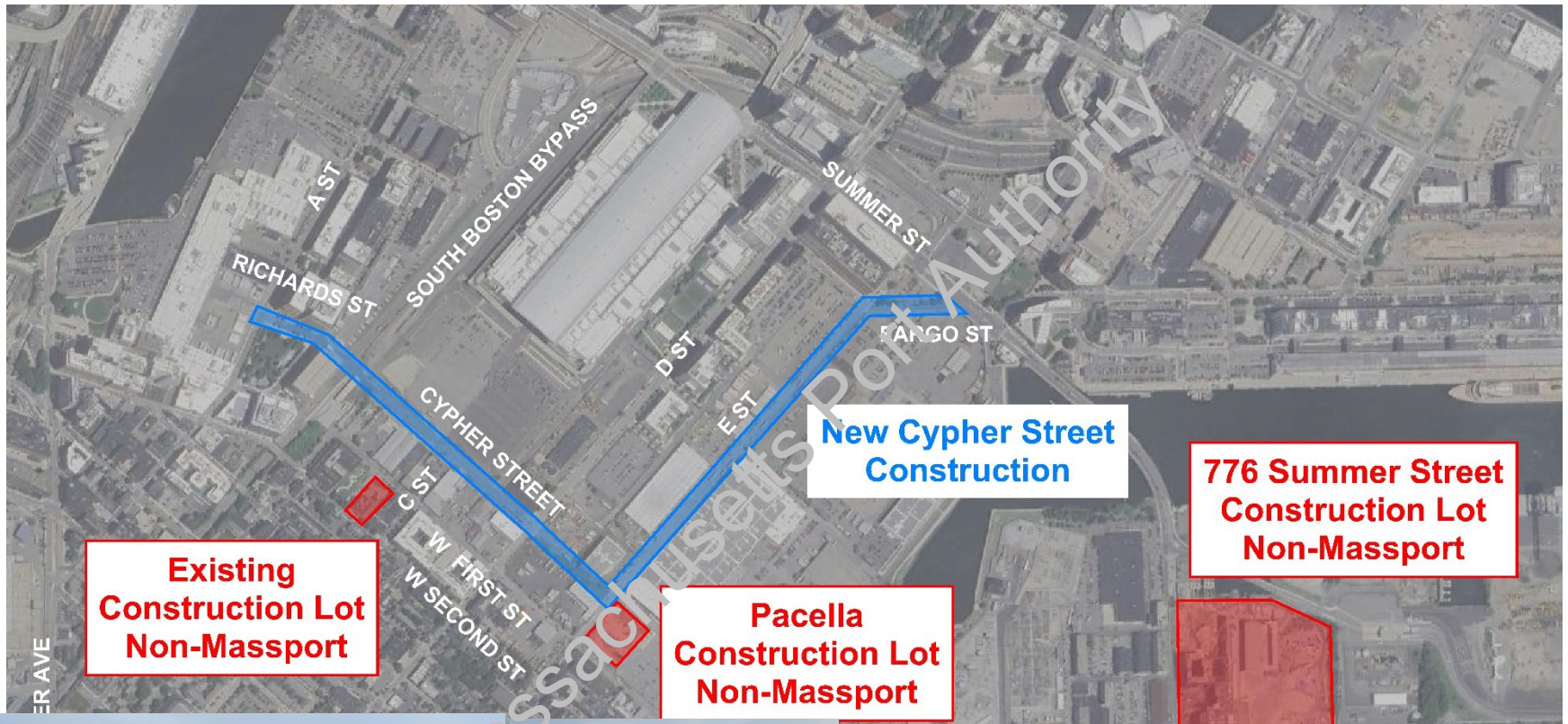
- **Automated Dust Monitoring Stations**
Automated dust monitoring equipment equipped with web-based system will provide real time data and reporting along with real time notifications.
- **Weather Monitoring** – Web-based system will also include current weather conditions including wind speed and direction.
- **Adaptation** - The locations and designations (upwind/downwind) can be adjusted based on changing construction activities and/or weather conditions.

Dust Monitoring / Mitigation

Existing Baseline Dust Monitoring: Dust levels will be monitored along the construction corridor and 3 parks (A Street Park, Flaherty Park and Mahoney Community Garden) prior to the start of major construction activities.



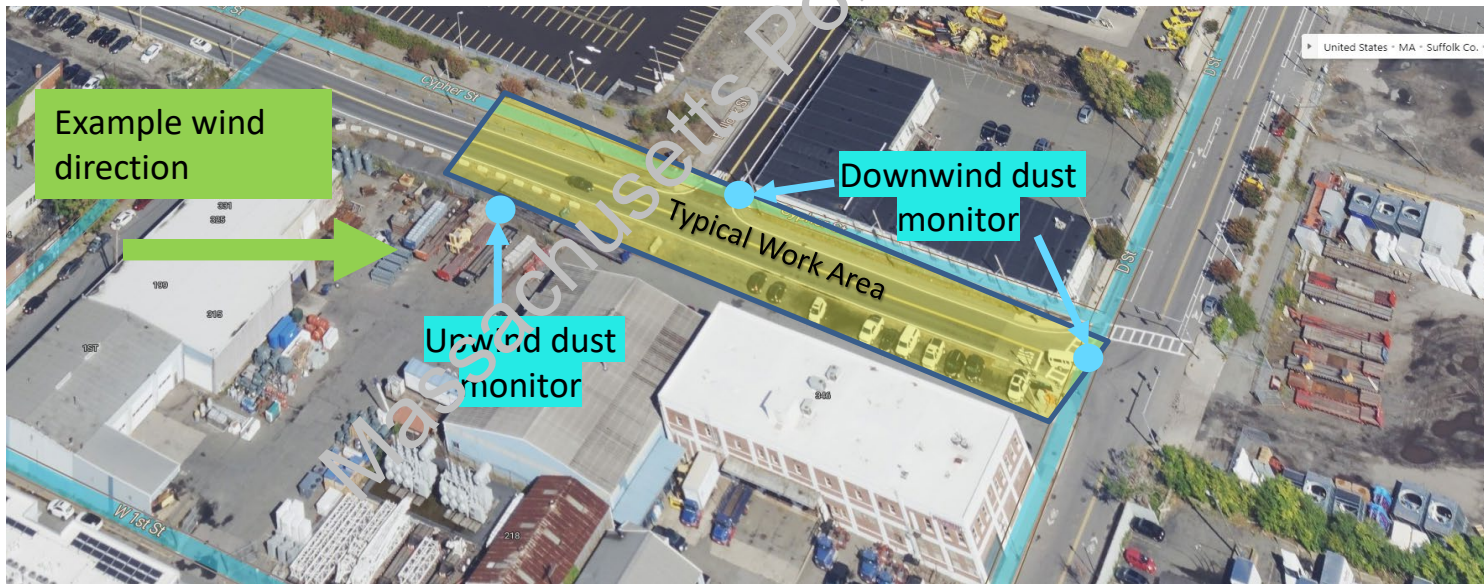
Existing Construction Projects by Others



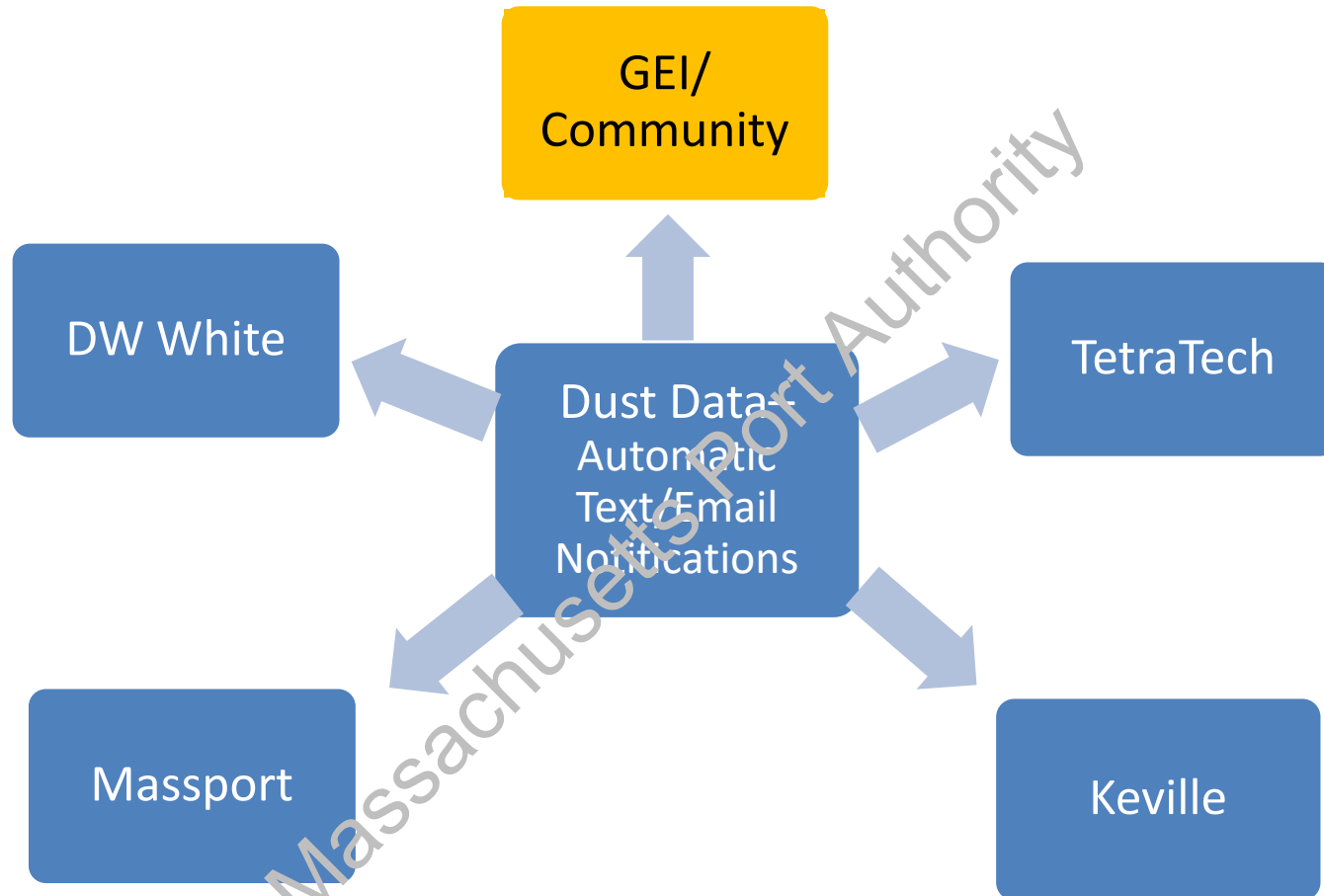
Dust Monitoring Program

Dust Monitoring Locations

- **Construction Phase Dust Monitoring** – Continuous dust monitoring will be conducted at the fence line in the area of active construction – one upwind and two downwind.
- **Work Zone** – Contractor will have additional monitors within construction zone for worker safety.
- **Parks** – Massport is working with City of Boston to install monitors at 3 local parks



Dust Monitoring, Communication and Response



- Regular and continuous communication with community LSP (GEI)
- Posted phone number for community concerns

Dust Monitoring Program

Layers of Safety

- Dust control measures will be enacted and monitored daily as part of the work
- Dust Action Limit has been calculated based on corridor specific soil analytical data. This level is calculated as an average concentration for a workday.
- Dust Response Level is half of the Dust Action limit
- Response level will sound prior to Action limit to reduce reaching dust action level



Dust Monitoring, Communication and Response

If Dust Response Level is reached:

- Resident Engineer informs Construction Superintendent to Implement Enhanced Dust Control Measures
 - Review whether work activity should be paused and performed at another time when wind reduces
 - Spray additional water to wet soil and reduce dust generation
 - Review work logistics and placement of water misters
- TetraTech reviews Dust Levels continuously until they remain below [Response Level](#)

If Dust Action Limit is reached:

- Construction Superintendent Stops Work in collaboration with LSP
- Contractor Implements Enhanced Dust Control Measures
- Dust Levels Reviewed Continuously until they remain below [Response Level](#), at which point work can proceed
- Communication with Community LSP (GEI) – GEI will be notified promptly of the Stop Work event and response activities performed

Dust Control Measures during Construction

- Monitor dust in real time
- Fencing with dust scrim
- Water misters
- Street sweeping
- Stone construction entrance (tracking pad)
- Water trucks for targeted dust control
- De-con station for all trucks leaving TSCA work zone. All trucks exiting TSCA area will be covered and be directed to exit out on to Bypass Road
- Contractor competent safety person, resident engineer and environmental field staff full time in TSCA area
- TSCA trucks staged on pavement and not existing soils



Project will NOT leave any area of TSCA soil exposed overnight



STREET SWEEPER



WATER MISTER

Equipment Decontamination – TSCA Segment

Decontamination within TSCA Area

- Construction, tools and other equipment will be decontaminated before it leaves the work area per 40 CFR 761.79(c) “double wash, double rinse” protocol
 - Removal of heavy soiling or impacts through scraping and brushing
 - Double washing equipment in accordance with the standard to ensure no tracking of impacted soils.
- Wash water, sediment and cleaning materials from decontamination area will be captured and placed in drums for disposal
- Controlled entrances to be sure truck hauling do not track material outside the limits of the project

Waste Management within TSCA Area

- Contaminated Personal Protective Equipment (PPE) for workers will be disposed of in drums to the proper facility.
- Decontamination rinse water, sediment and other cleaning materials will be captured and disposed of as TSCA waste

Regulatory Reviewed by



Other Construction Measures - Stormwater Controls

Stormwater and Erosion Controls

The following plans and submittals establish the requirements for stormwater and erosion control measures to be implemented during the project:

- **Boston Conservation Commission – Order of Conditions (OOC)**
- **Construction General Permit (CGP)**
- **Stormwater Pollution Prevention Plan (SWPPP)**
- **Installation and Maintenance of Stormwater Erosion Controls**
 - Straw Wattle / Silt Fencing around disturbed areas
 - Catchbasin Inlet Protection (Silt Bags)
 - SWPPP and OOC Require Regular Monitoring, Repair and Replacement of Erosion Controls
 - SWPPP requires inspection after storm events



Massport Safety Specific Initiatives

- 20-20-20 safety initiative
- Daily Pre-Shift Safety Huddles
- Full-time Resident Engineer
- Additional safety inspection by Chubb safety personnel
- Environmental field staff in TSCA area
- All workers working in the TSCA soils will be 40-hour OSHA trained
- See something, say something program



Cypher / E Street Improvements

Questions / Discussion

Contact

Massport Community Relations & Government Affairs
Community@massport.com / Tommy Butler: 617-921-9013

24/7 Contractor Recorded Line: 774-209-5912

