

FORT POINT
NEIGHBORHOOD
ASSOCIATION

MARCH 31, 2020

Gillette South Boston Manufacturing Center

Chapter 91 License Application



LICENSE HISTORY



PURPOSE OF LICENSE

Single License to Maintain:

- Existing structures and uses
- Water-dependent industrial uses
- Water-dependent accessory uses



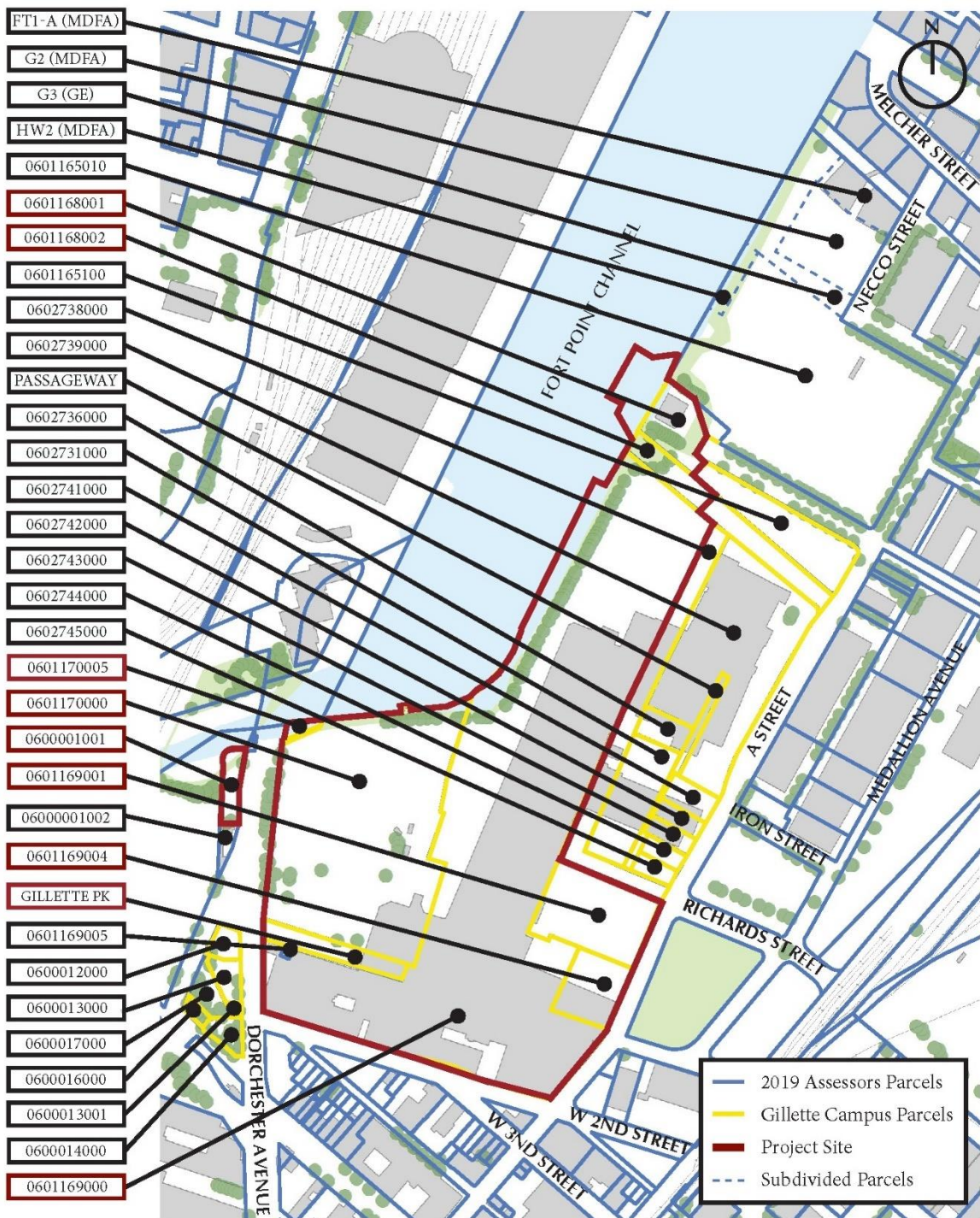
PROJECT SITE

- 8 Parcels
- 25.6 acres— most of which is historically filled tidelands
- Includes 46,364 sf of water-sheet



PROJECT SITE

- 8 Parcels
- 25.6 acres— most of which is historically filled tidelands
- Includes 46,364 sf of water-sheet



EXTENDED TERM LICENSE REQUEST



SOUTH BOSTON WATERFRONT DISTRICT

MUNICIPAL HARBOR

PLAN

A MUNICIPAL HARBOR PLAN OF THE CITY OF BOSTON



CITY OF BOSTON
Thomas M. Menino
Mayor

Boston Redevelopment Authority
Mark Maloney
Director

JULY 2000

MUNICIPAL HARBOR PLAN



Fort Point Associates, Inc.

Urban Planning Environmental Consulting Project Permitting

A TETRA TECH COMPANY

4/20/2020

CHAPTER 91

Water-Dependent

vs.

Nonwater-Dependent





1. Seawater intake building is located here.

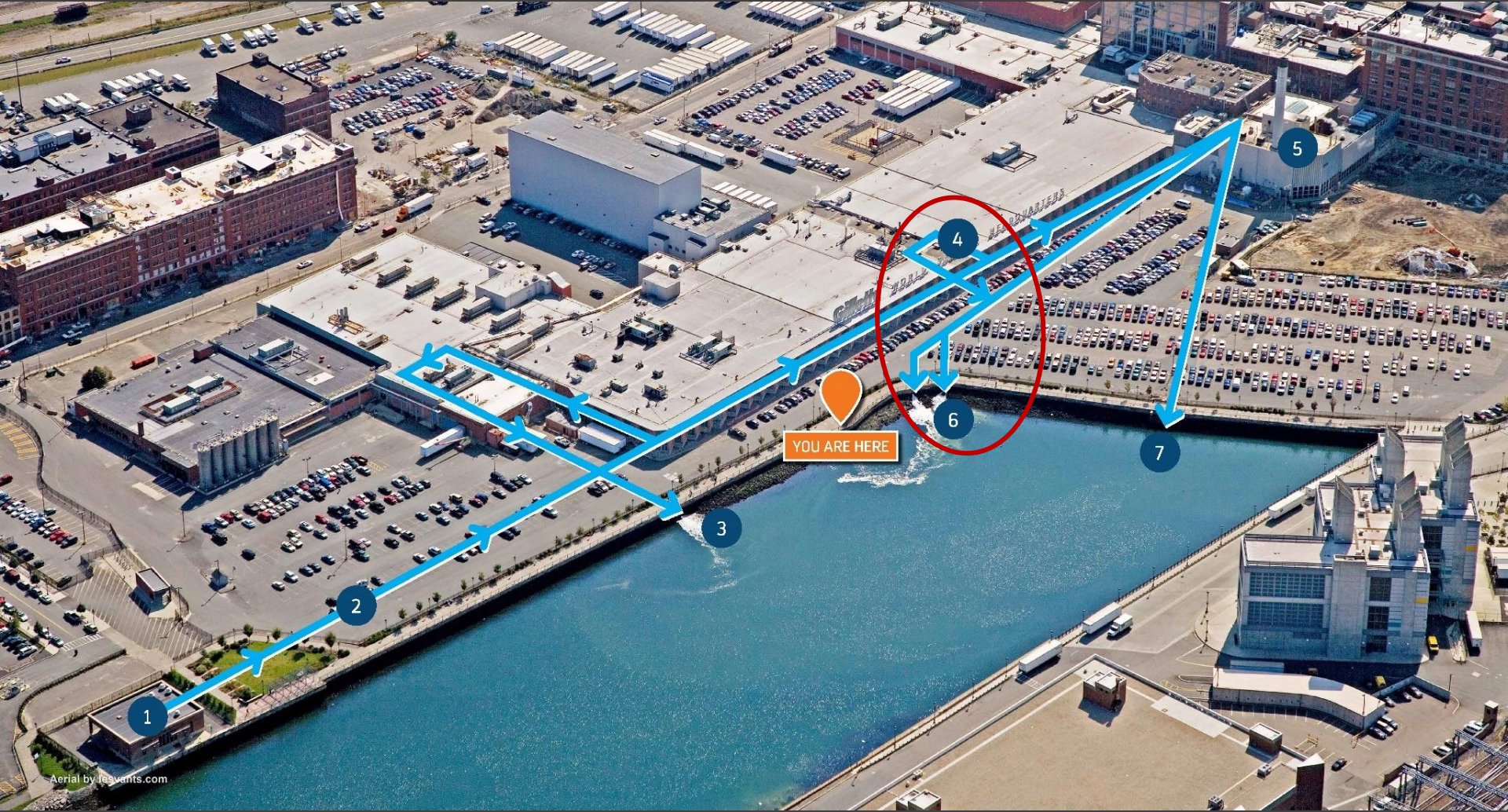


2. Three pipes run below the parking lots and above the I-90 highway tunnel.



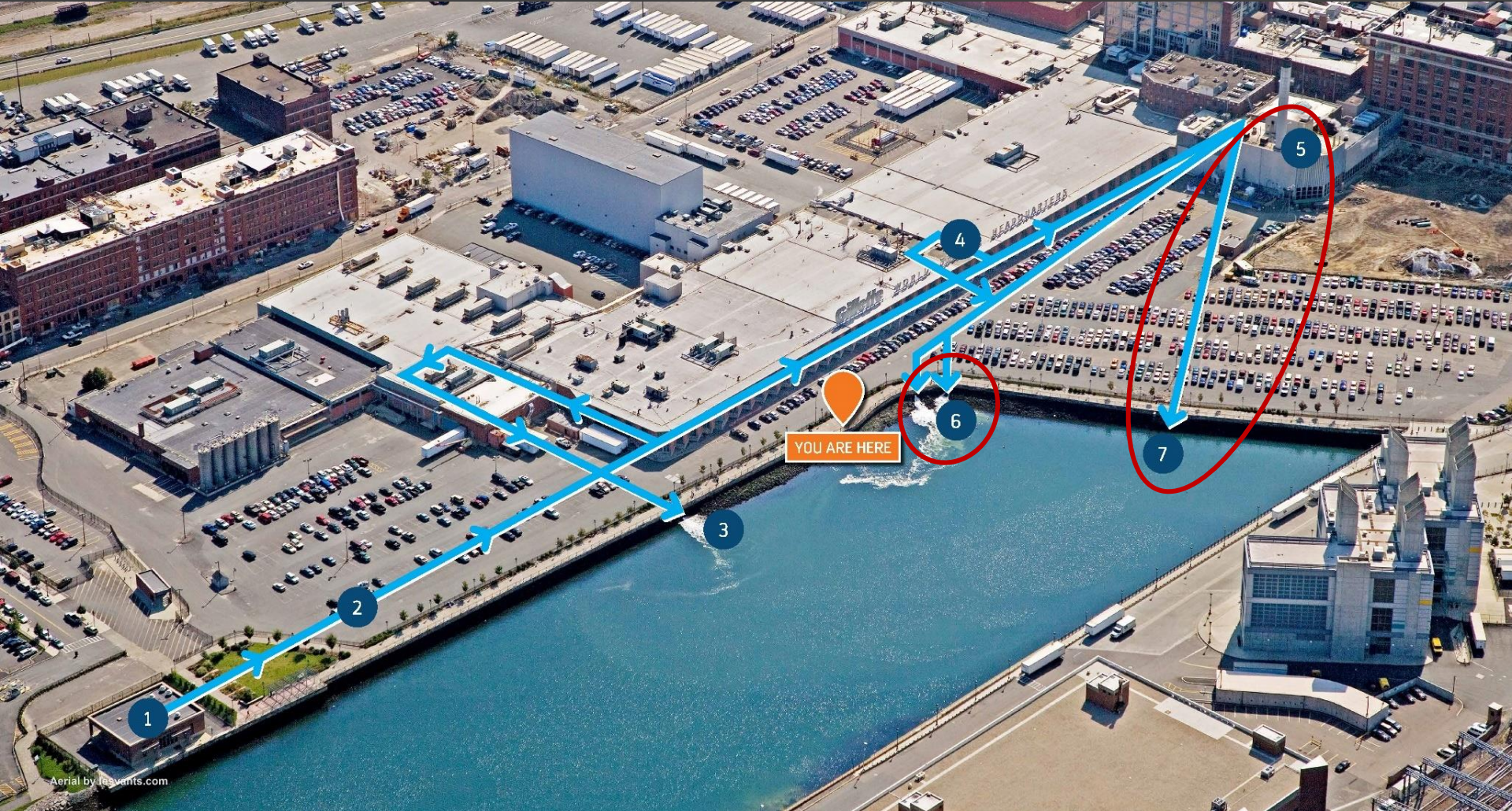
Aerial by iStock.com

3. Cooling water from the manufacturing building is returned to the Channel through the outfall at Location 3.



Aerial by icavants.com

4. Water used to cool manufacturing machinery discharges at Location 6.



Aerial by icavants.com

5. Water taken from the Channel cools power-generating machinery at the Power House (and at the Chiller Building for warm-weather cooling of the buildings). Water is discharged at locations 6 and 7.

MA DEP CHAPTER 91 PUBLIC PROCESS

File Number
Reference:
W20-5696



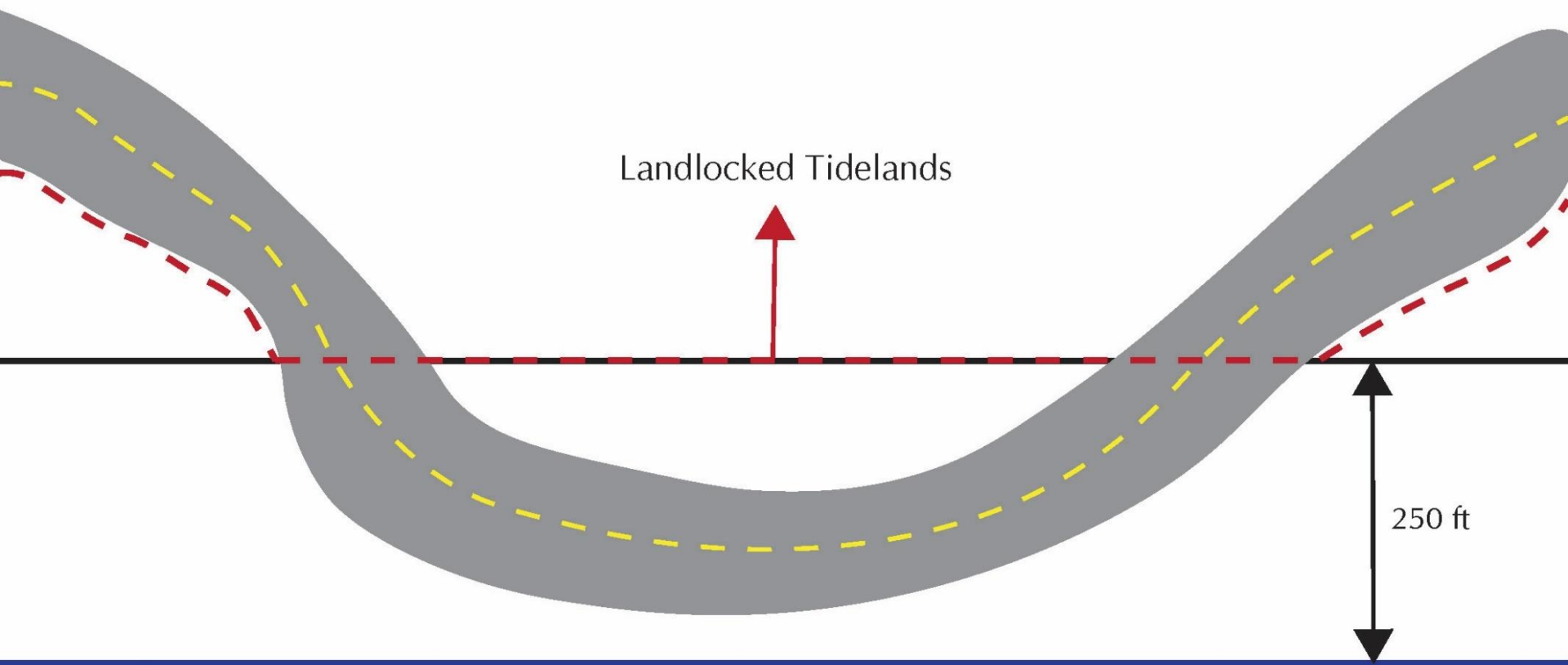
COMMENTS
TO:

Susan You
Waterways Regulation Program
Mass DEP
One Winter Street, 5th Floor
Boston, MA 02108

Susan.You@mass.gov

LANDLOCKED TIDELANDS

- Any filled tidelands which on January 1, 1984 were entirely separated by a public way or interconnected public ways from any flowed tidelands;
- Except for that portion of such filled tidelands which are presently located within 250 feet of the high-water mark, 310 CMR 9.02



Landlocked Tidelands

250 ft

Mean High Water





Fort Point Channel

I-93

Frontage Rd

Foundry St

Dorchester Ave

W Broadway

Athens St

W 2nd St

W 3rd St

W First St

Richards St

A St

Iron St

Channel Center St



Binford St

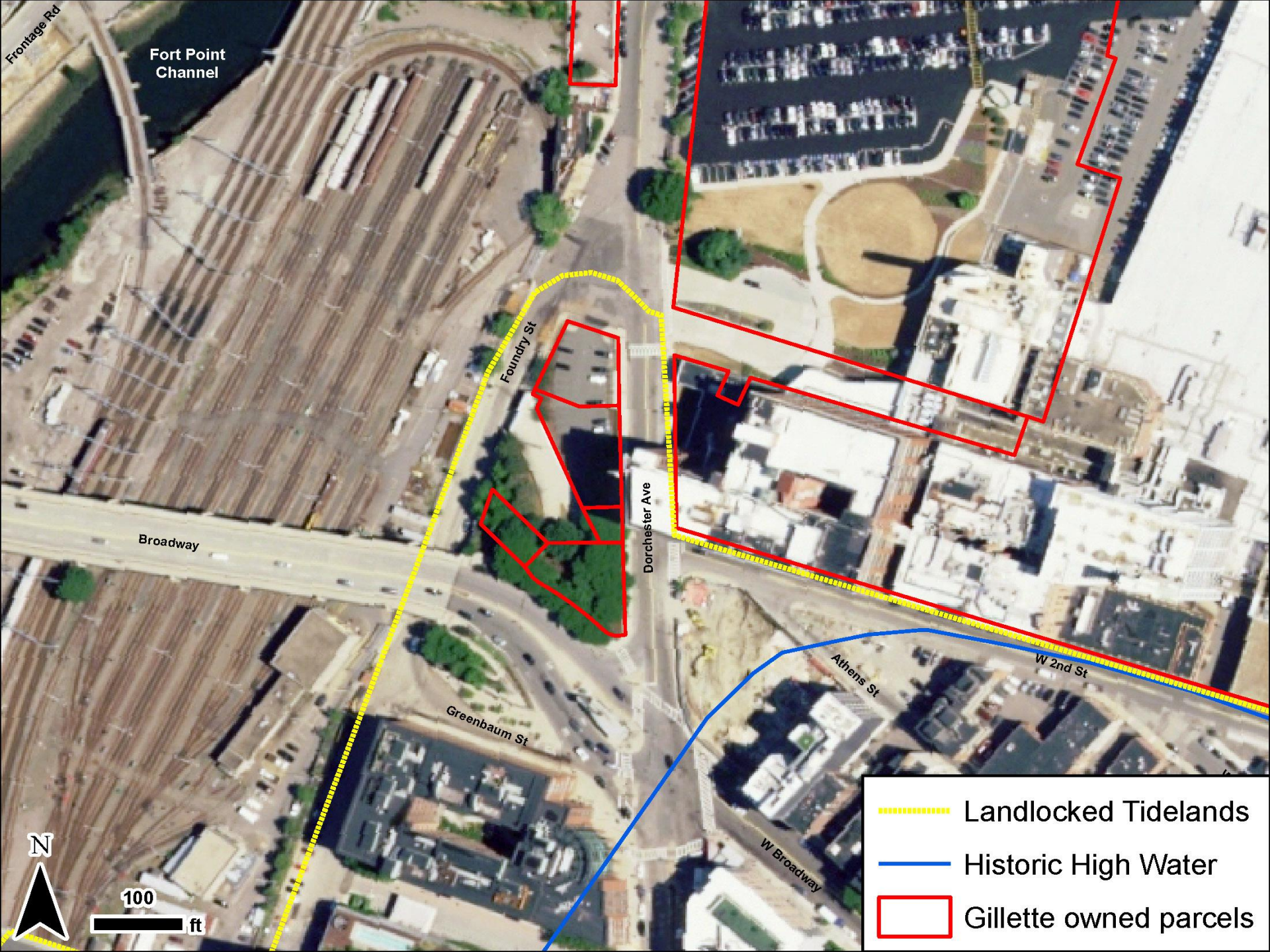
Wormwood St

N380



200 ft

 Landlocked Parcels
 Gillette owned parcels



Fort Point Channel

Frontage Rd

Broadway

Foundry St



Greenbaum St

Dorchester Ave

Athens St

W Broadway

W 2nd St

-  Landlocked Tidelands
-  Historic High Water
-  Gillette owned parcels

N

100
ft