

FORT POINT NEIGHBORHOOD ASSOCIATION



**FPNA NEIGHBORHOOD GATHERING: REDUCING FLOOD RISK, NEIGHBORHOOD UPDATES & YOUR
TOP WISHES**

REDUCING THE RISK OF STORM WATER BACK SURGE FLOODING

JOHN P. SULLIVAN, P.E.

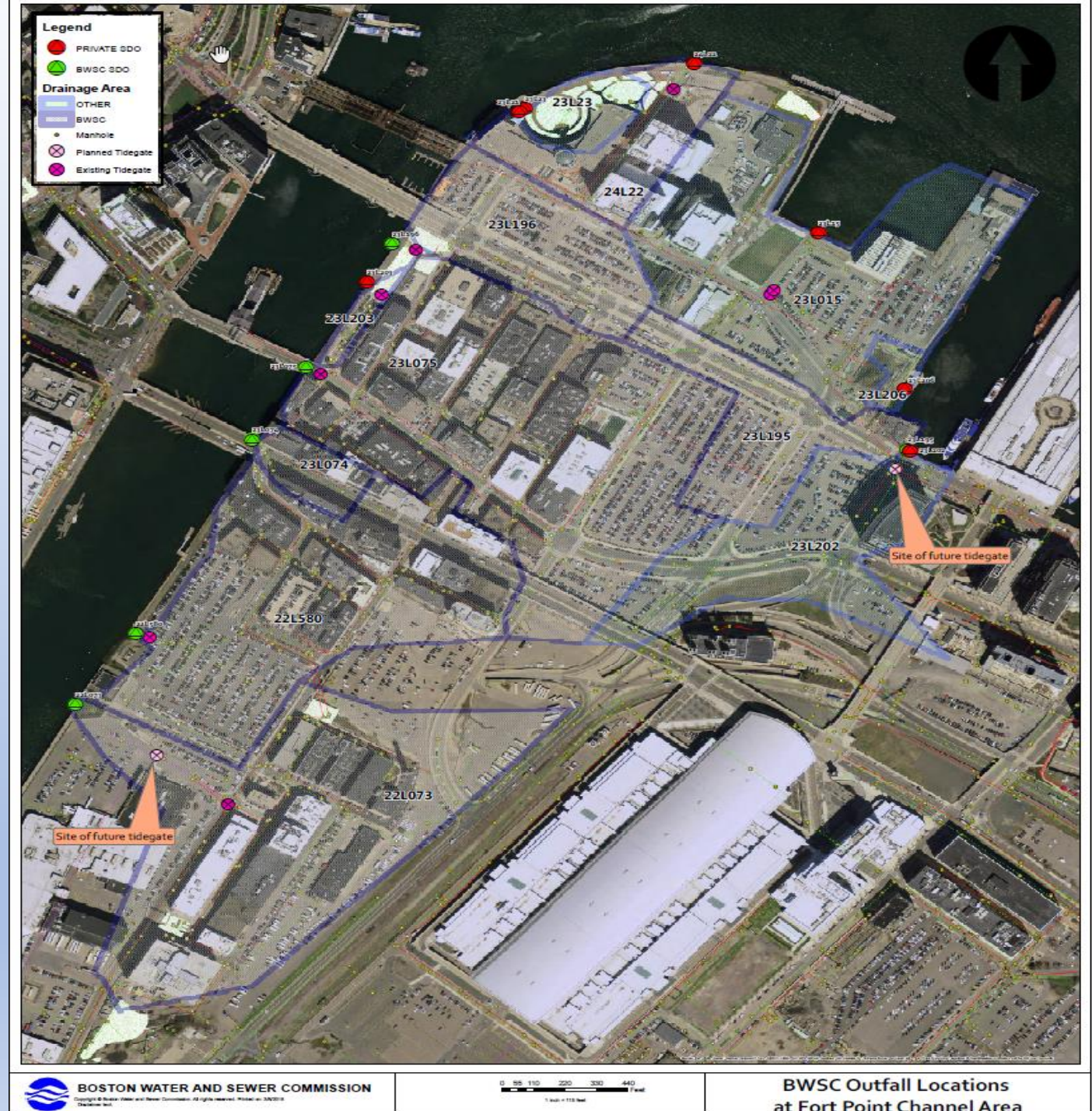
CHIEF ENGINEER

MAY 22, 2018

Fort Point Channel – South Boston Tributary Areas

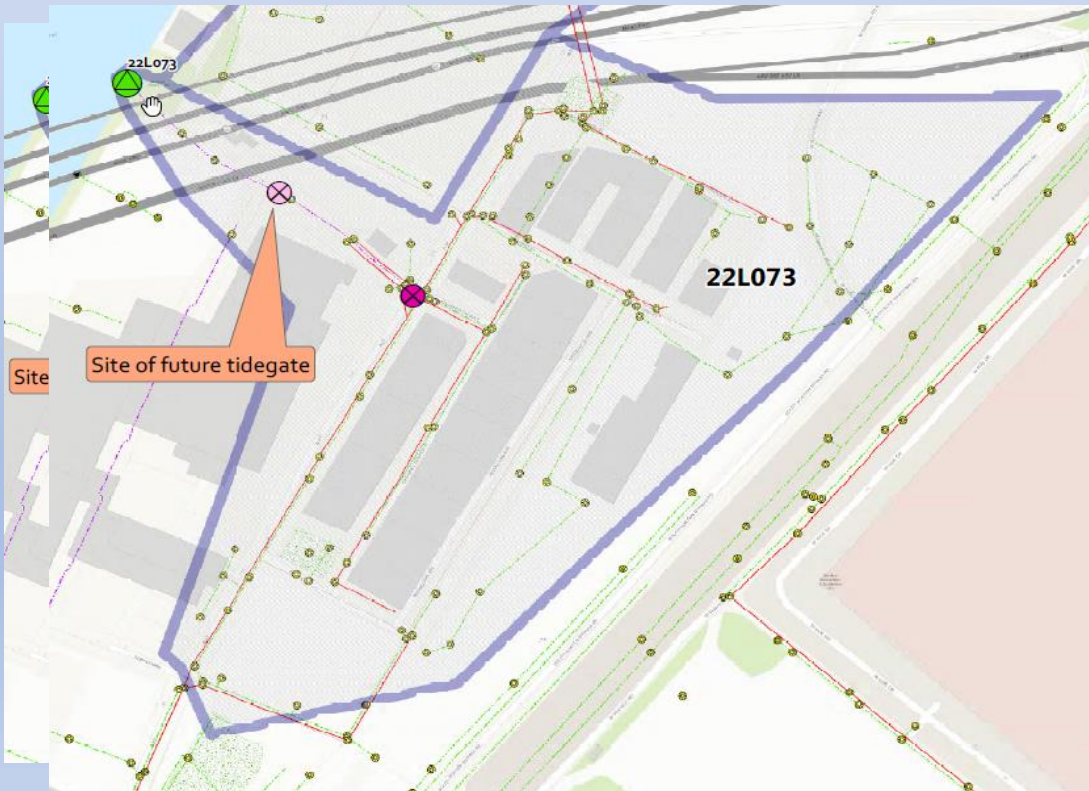
Blue lines mark tributary boundary lines.

All water that falls within these polygons
outlets to the designated outfall



Blue Lines indicate
area which flows to
individual outfall

Sub area shown below:

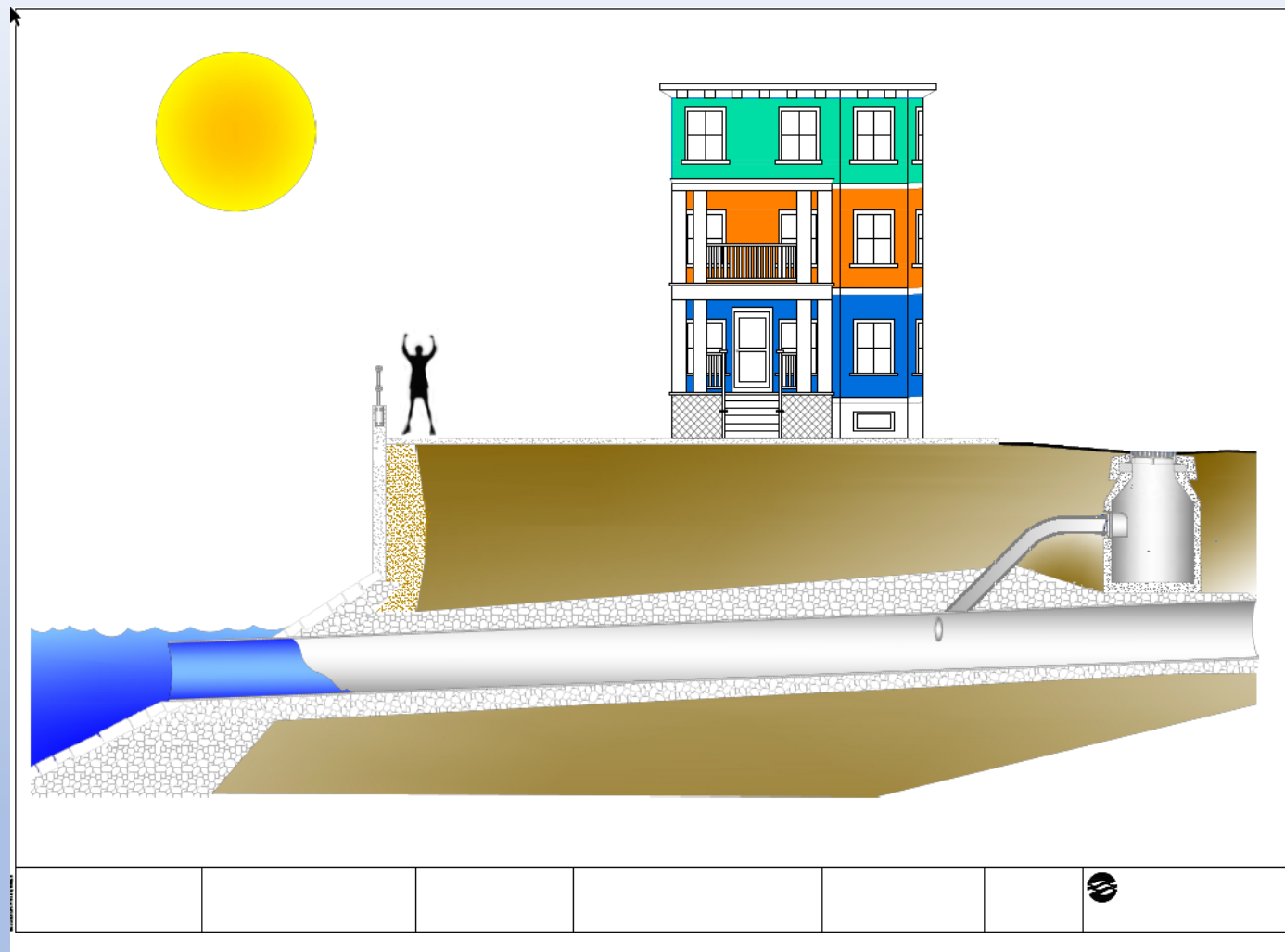


South Boston Sanitary Sewer System



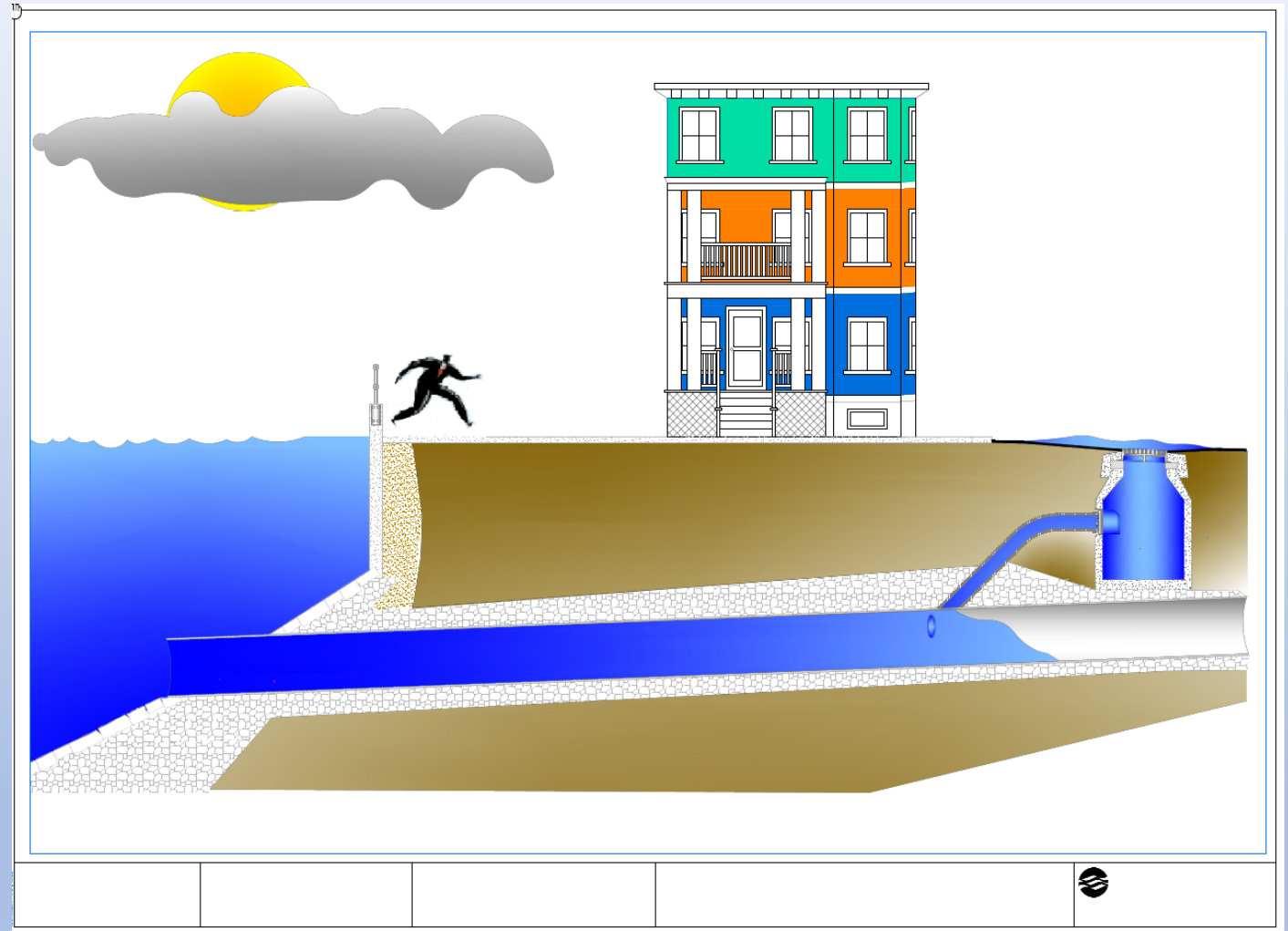
Sunny Day – no worries

Unless there is an extreme high tide predicted, there are no major concerns for unprotected outfalls



Wet Weather Event

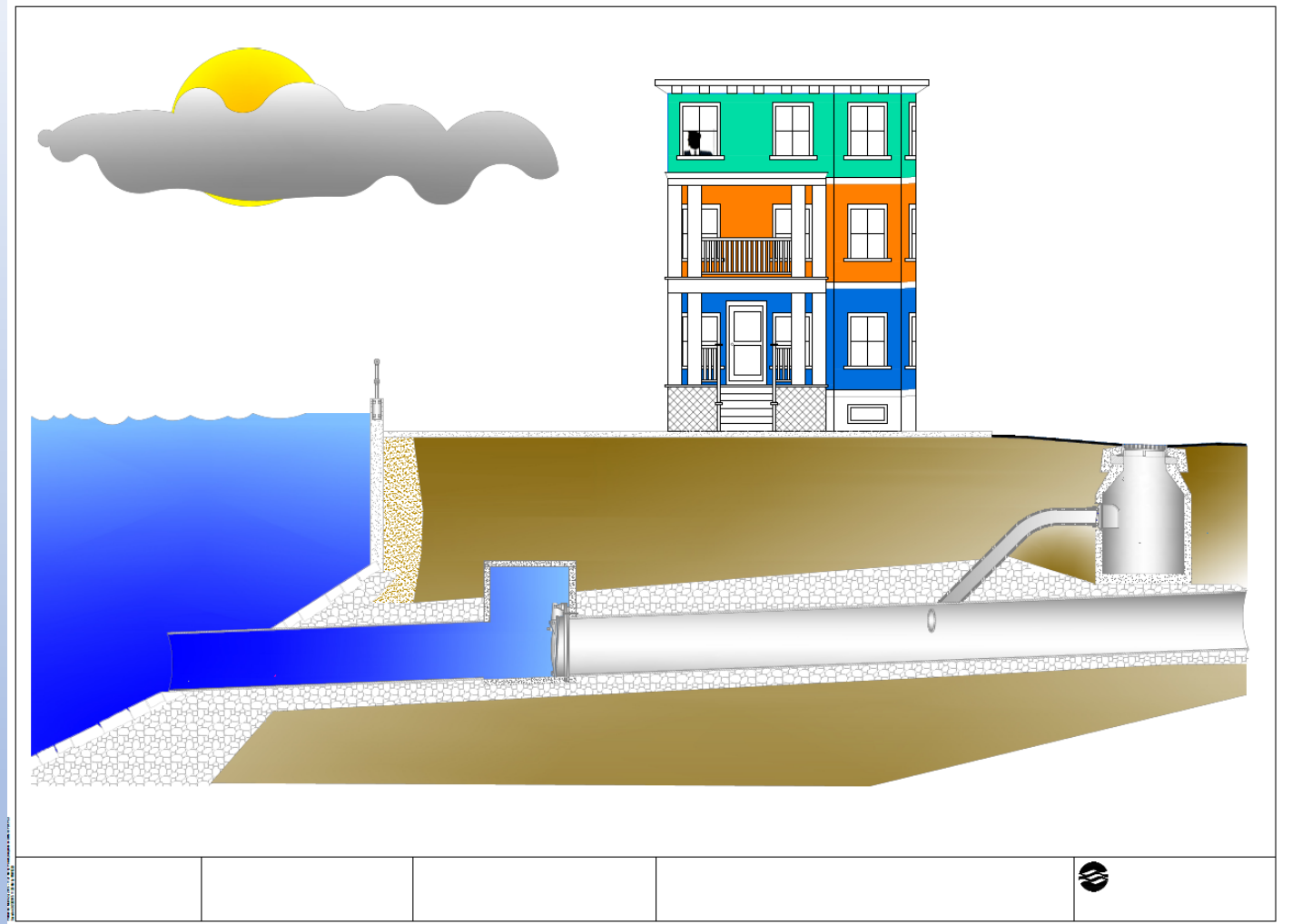
During high tides and extreme rainfall, or extreme high tides with no rainfall, unprotected drain lines allow for major surcharging of the systems putting streets and all basement areas of buildings under stress



Tidegates Protect Drain Systems

During Extreme High tides, tide gates can keep the tide from flowing up the drainage system, protecting roadways and buildings.

When there are extreme tides and there is rainfall, the tidegates allow for storage capacity until the tide recedes. (Storage may be limited)



Single Cast Iron Tidegate



Double tidegate
within chamber



Cast Iron Tidegate in Deep Chamber

Special entry
precautions must be
used when entering
this chamber to
perform maintenance

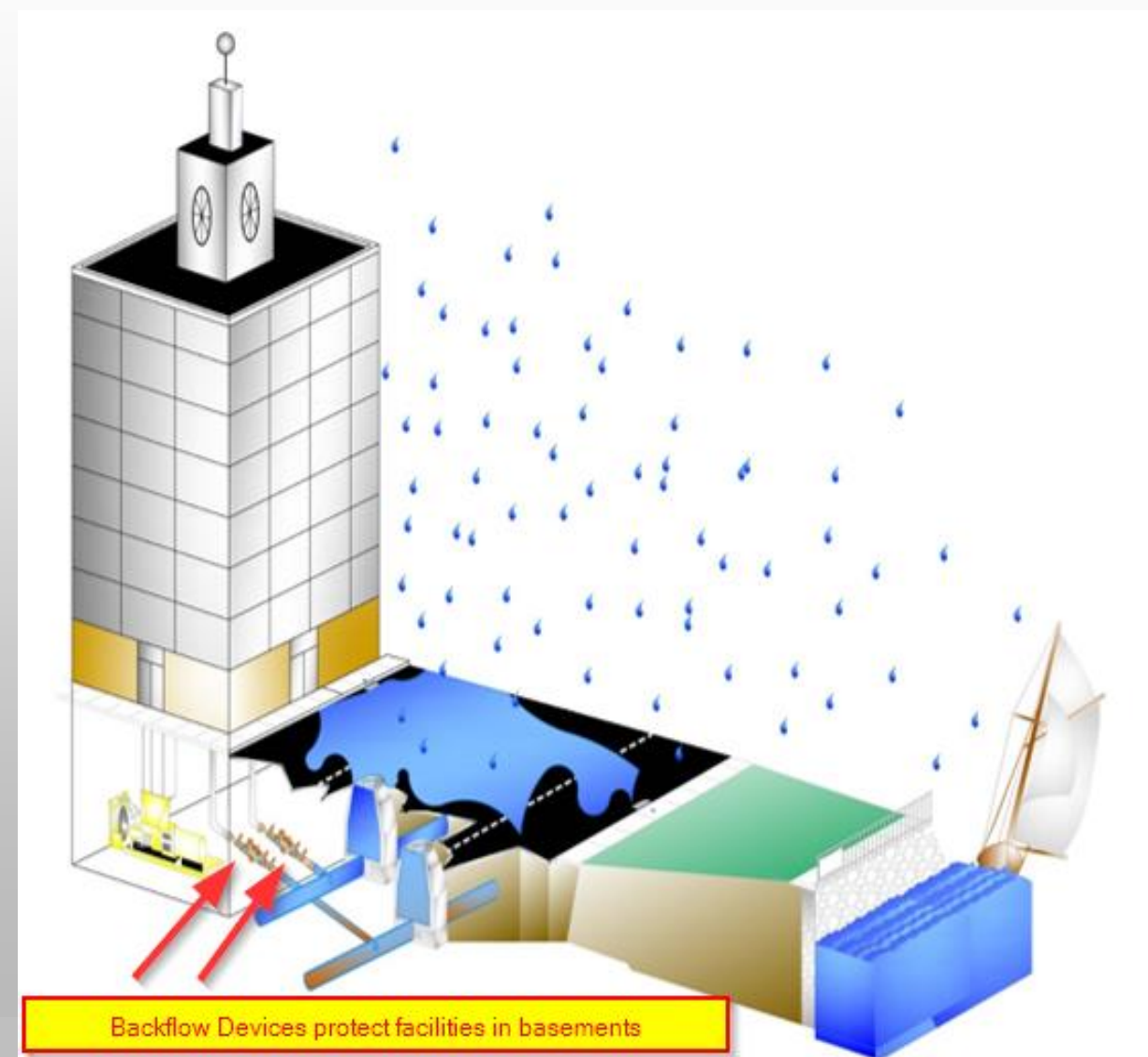




Exercising a large
flexible tidegate at
Martin Richard Park

Private Property Issue:

Internal basement flooding from unprotected facilities connected to sewers and drains



Fort Point Channel Outfalls

Reported outfalls observed during a 2014 study of the water quality in the Fort Point Channel

(BWSC (14), MassDOT(13), Gillette(10), USPS (9) ,Other Private(3), Require Further investigation (15) as of 5/22/18)

 Boston Water and Sewer Commission

Fort Point Channel Water Quality Assessment Report

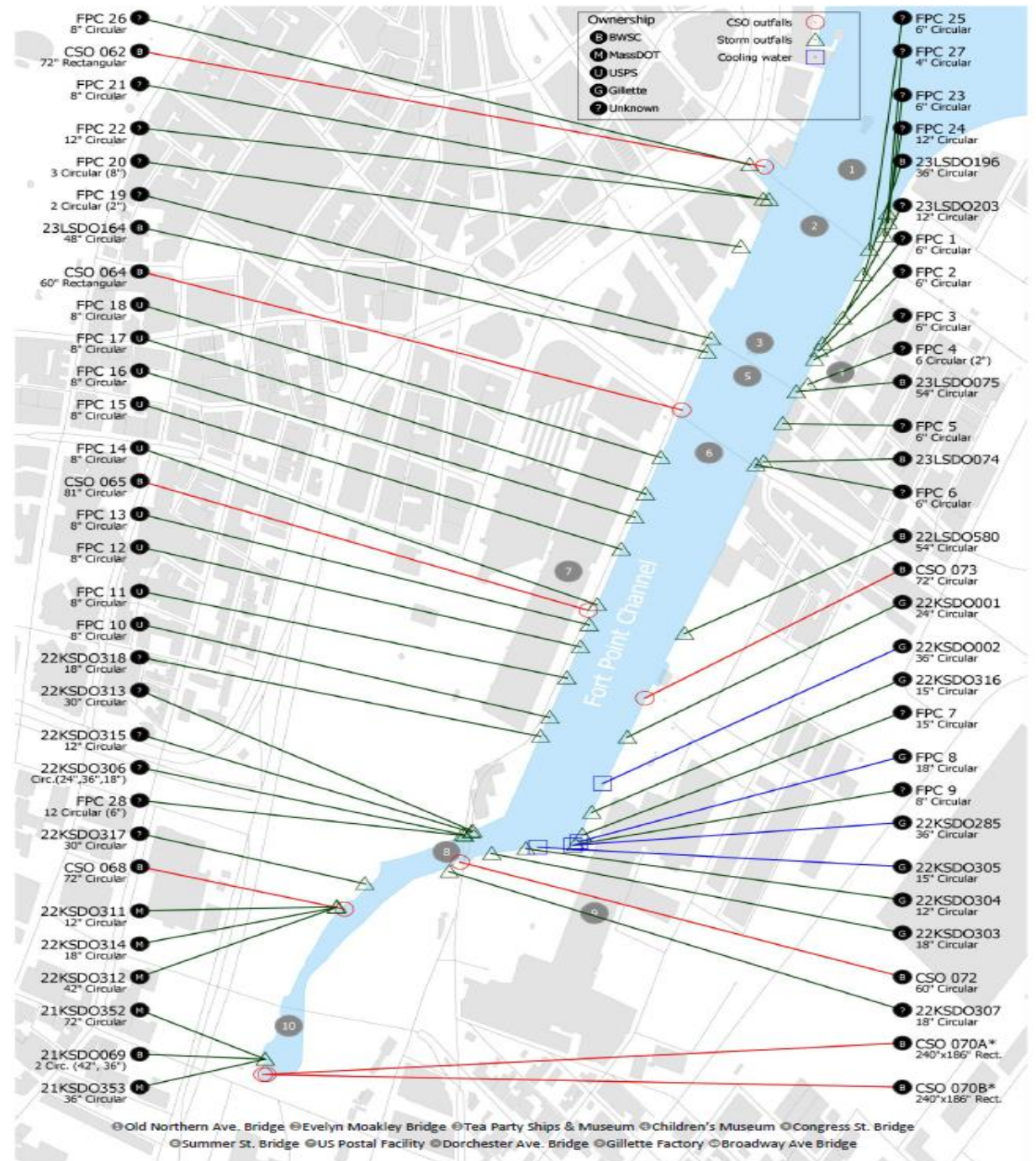
October 31, 2014

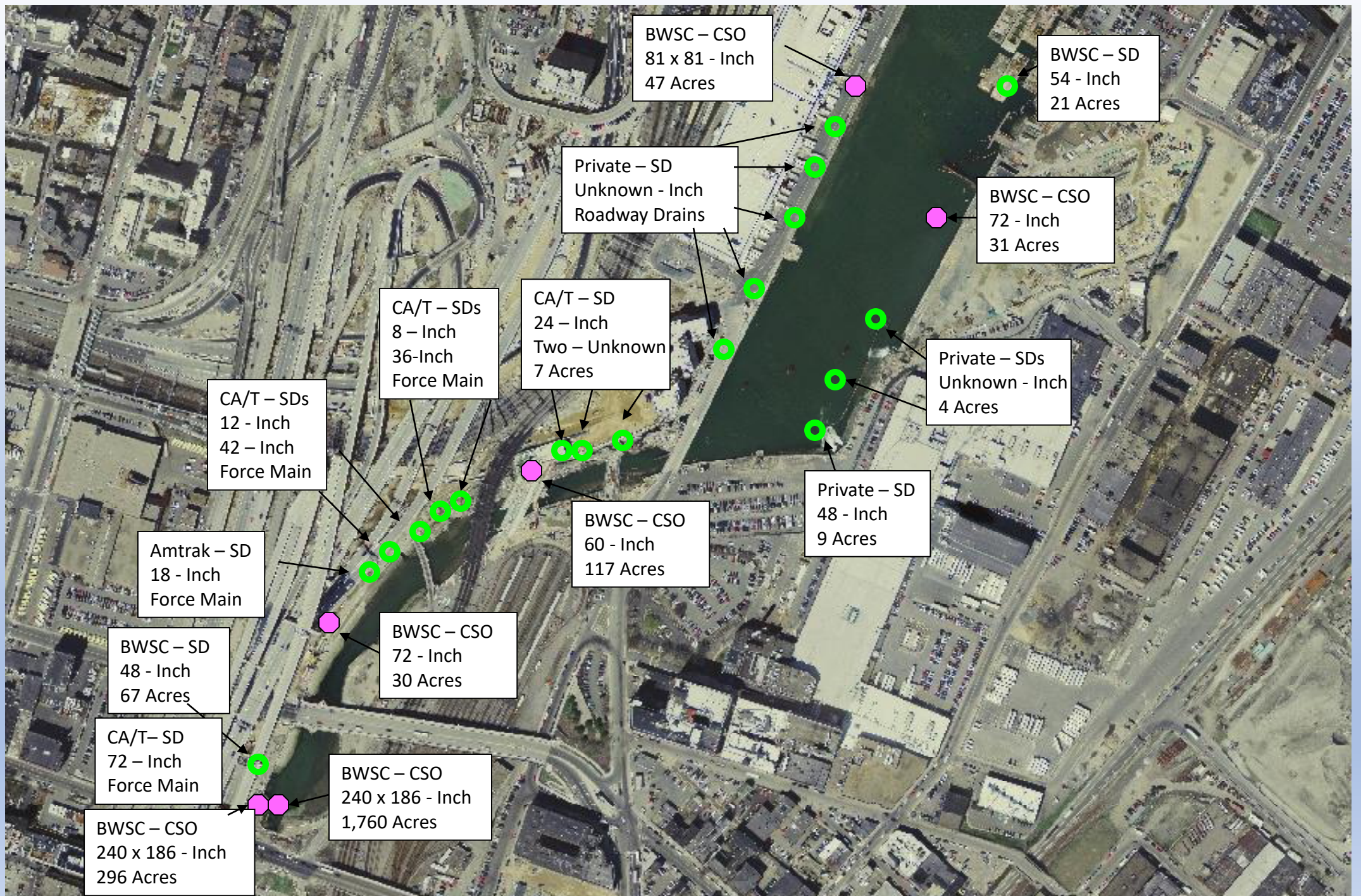


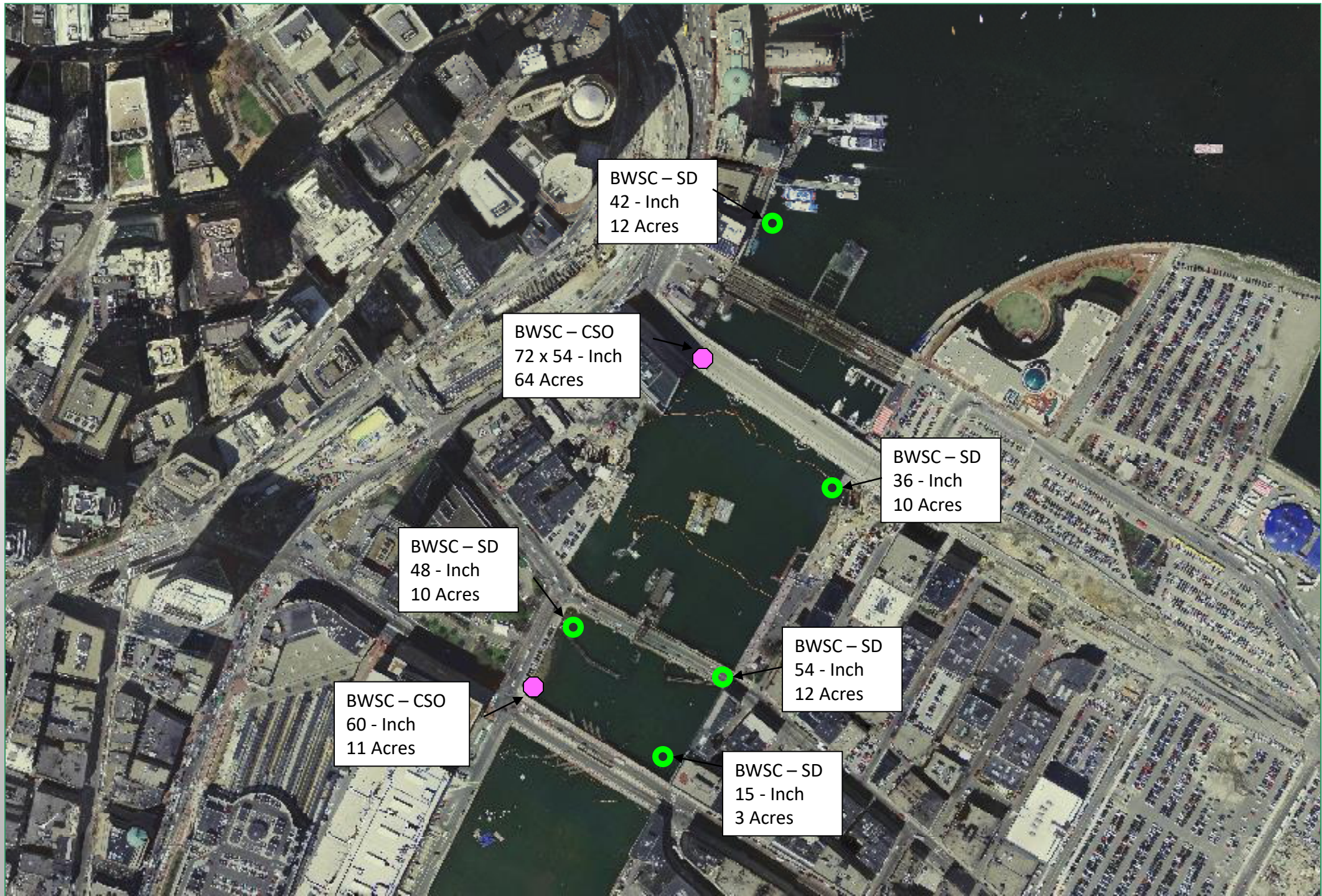
Prepared by



in association with
SDE • Woods Hole Group • PEER Consultants • ADS Environmental Services







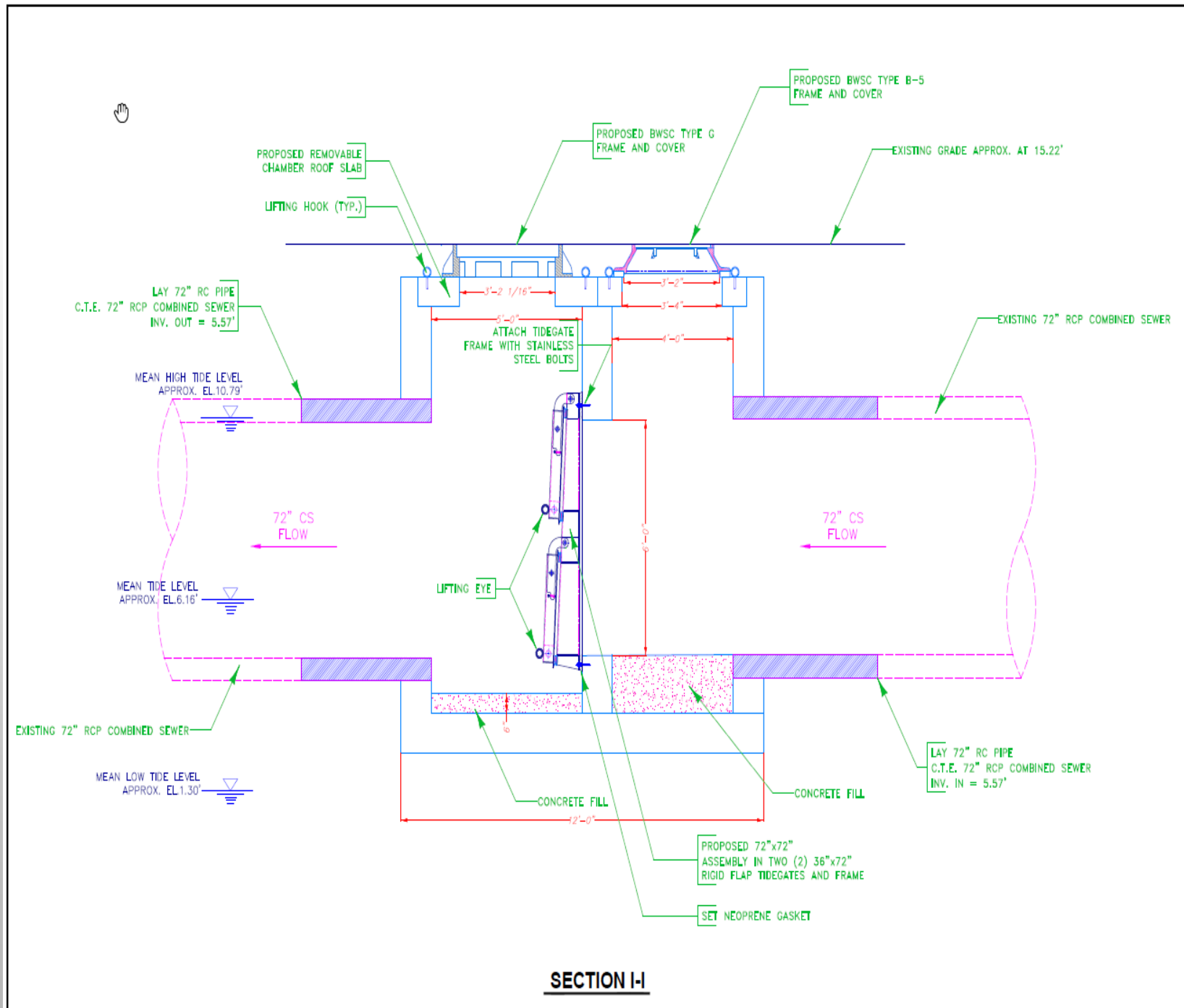
Mt Washington Ave. Tidegate

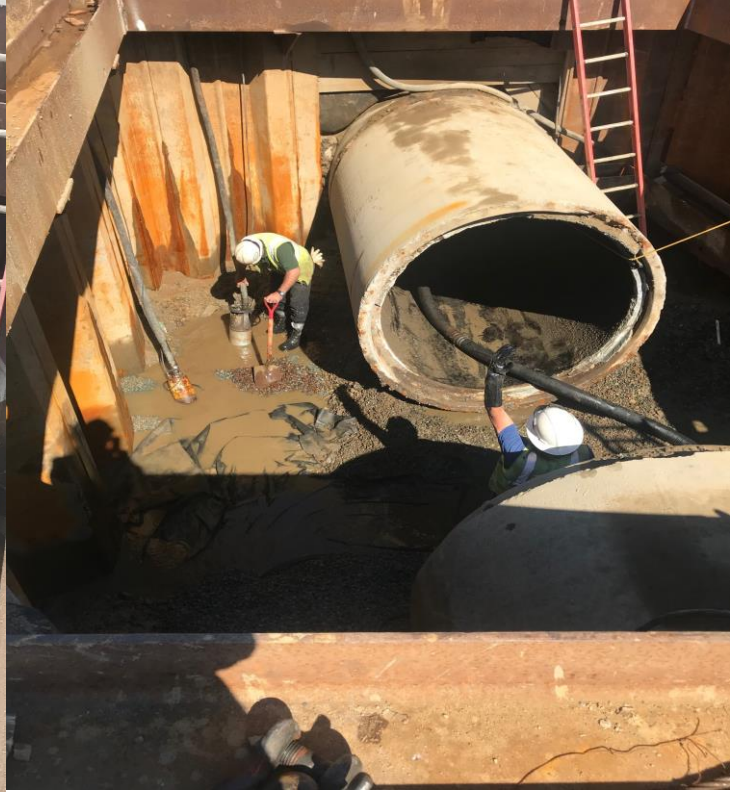
Construction Ongoing to install new tidegate
to protect tributary area to Outfall 22L073



Mt Washington Ave Tidegate Drawing

Cross-sectional view of new
tidegate and chamber





Discussion

John Sullivan, P.E.
sullivanjp@bwsc.org

www.BWSC.ORG

