

# Welcome!

Cypher, E, & Fargo Street  
Reconstruction Project  
Boston | Project File No. 608807

**Design Public Hearing**  
Condon School, 200 D Street  
South Boston  
November 13, 2018 | 6:30pm - 8:30pm

# Reasons for the Project

- Expand community connections
- Improve truck movements
  - Improve truck access on E Street from the Port to the South Boston Bypass Road / I-93
- Improve access to port
- Improve pedestrian and bicycle access to the Seaport District



## South Boston Waterfront Sustainable Transportation Plan

JANUARY 2015



# Why are we here?

- Present Agency Consensus Concept Plan
- Gather Public Input

# Project Team

## Project Management

- MassDOT
- Massport
- MCCA
- MBTA
- City of Boston

## Design & Engineering

- Nitsch Engineering
- City Point Partners
- TetraTech

# Project Stakeholders

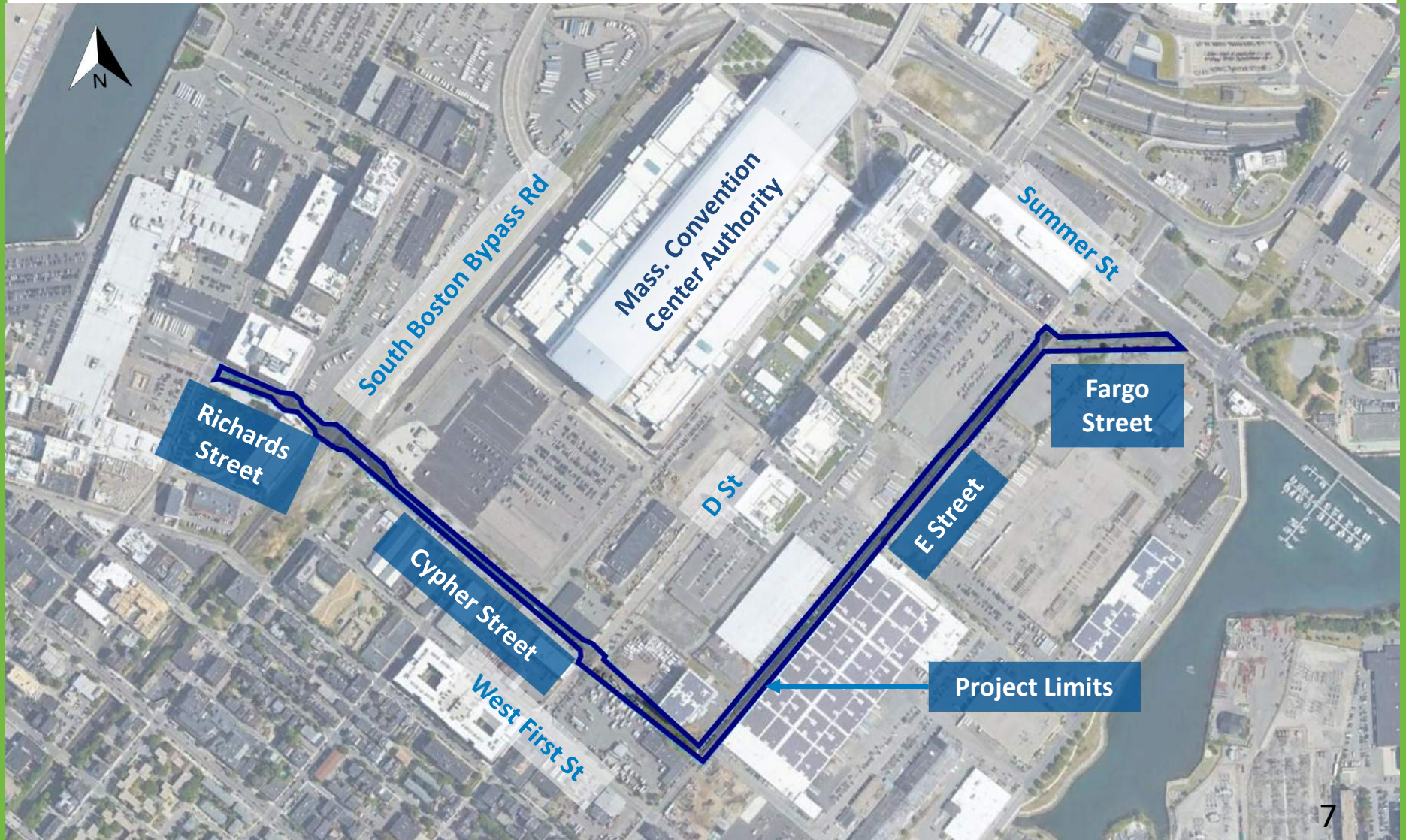
- **South Boston Residents and Businesses**
- **Technical Working Group Members**
- **Signature Boston**
- **Seaport TMA**



# Presentation Overview

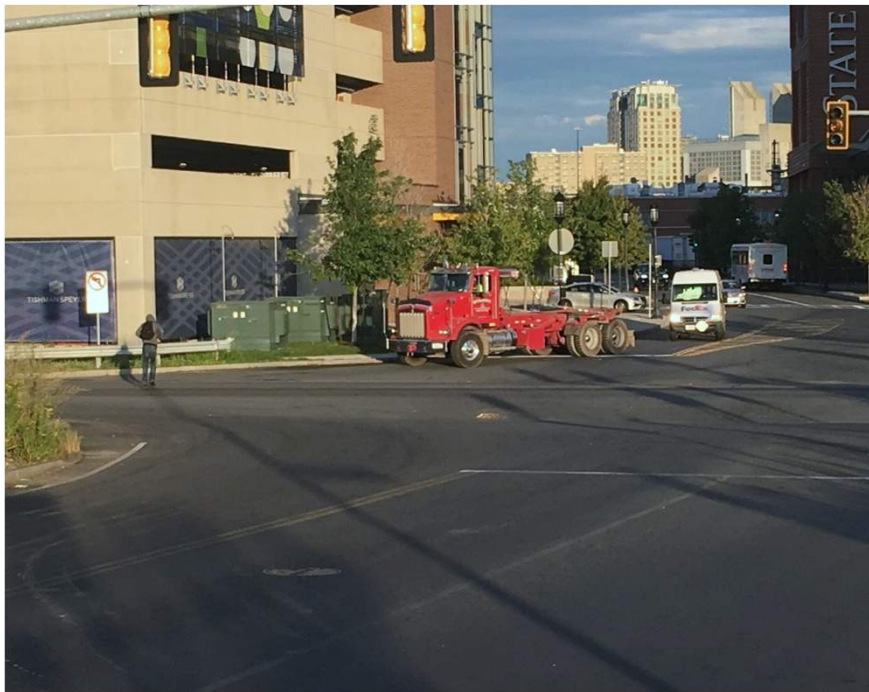
- **Project Area**
- **Goals**
- **Existing Conditions**
  - **ROW**
  - **Pedestrian & Bicycle Access**
  - **Truck Access**
  - **Railroad Grade Crossing**
  - **Hazardous Materials**
- **Hazardous Materials Mitigation**
- **Proposed Agency Consensus Concept Plan**
- **Schedule**
- **Next Steps**

# Project Area



# Existing Conditions

- Pedestrian / Bicycle access across South Boston Bypass (a.k.a. Haul Road)





# Existing Conditions

- “No Pedestrian Access” along Cypher Street



# Existing Conditions

- Truck Access



# Existing Conditions

- Railroad Grade Crossing & Proposed MBTA Red Line Test Track Facility



# Existing Conditions

- Soil Management



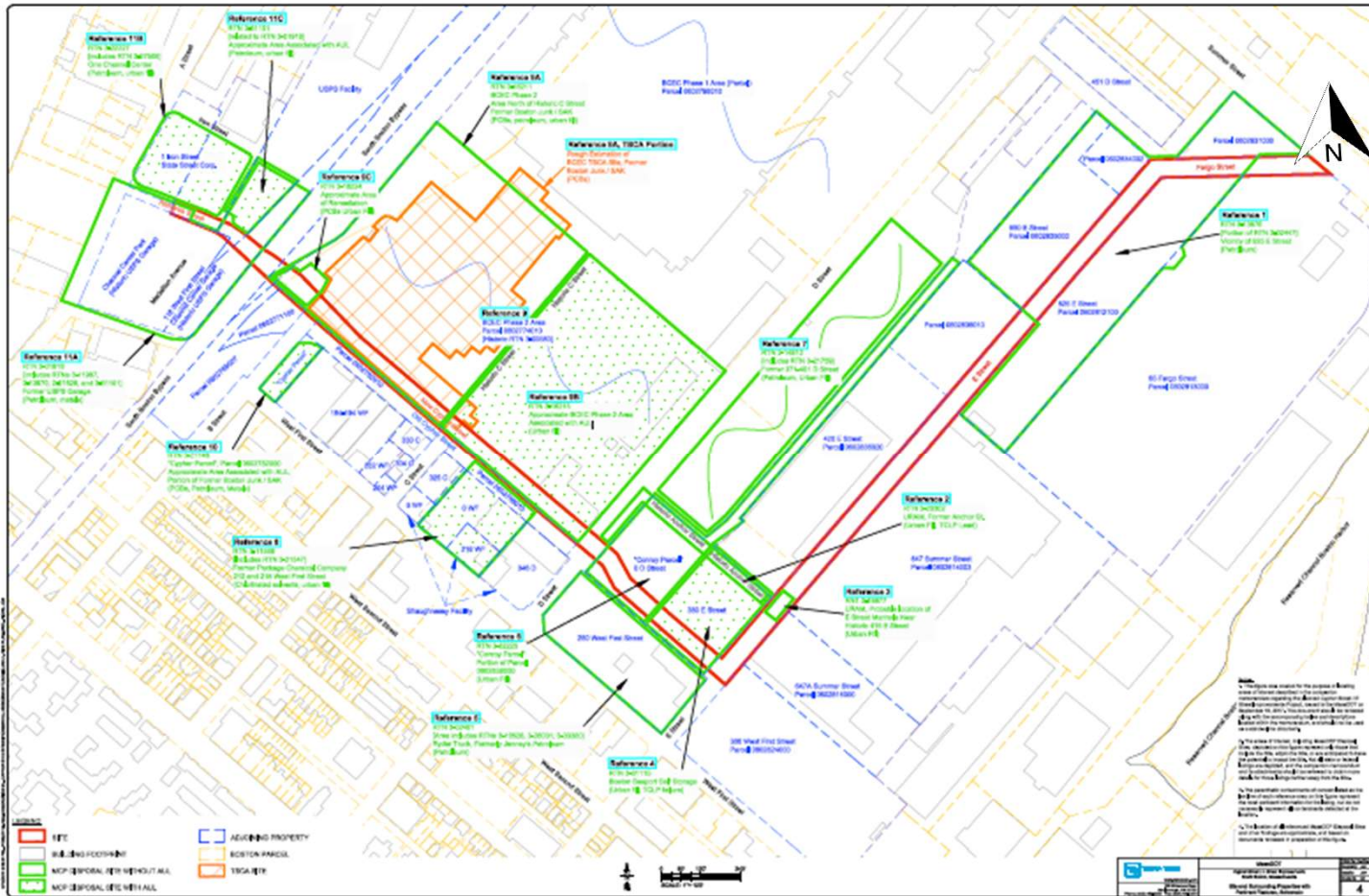
# Existing Conditions

- **Soil Management**

**Current soil conditions:**

- **Multiple soil monitoring sites in the project area are consistent with most coastal urban areas**
- **Advantage is that the area is very well studied**
- **Most sites have achieved regulatory closure under applicable regulations**
- **Closure with Permanent Solution implies that there are no significant risks as they now exist**

# Existing Conditions



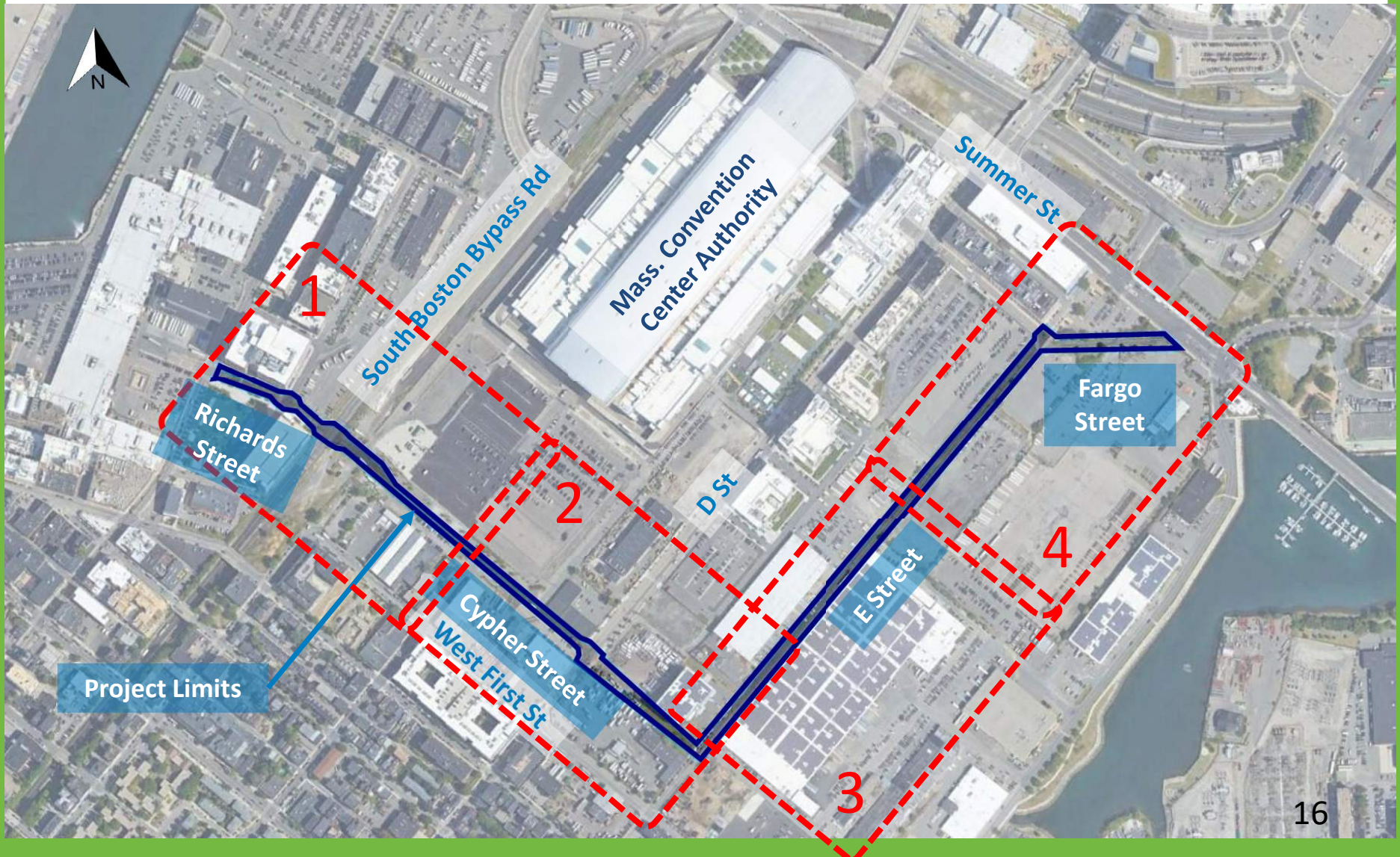
- Coal & Wood Ash
- Chlorinated Solvents
- Metals
- Petroleum Products

# Existing Conditions

## Construction phase management:

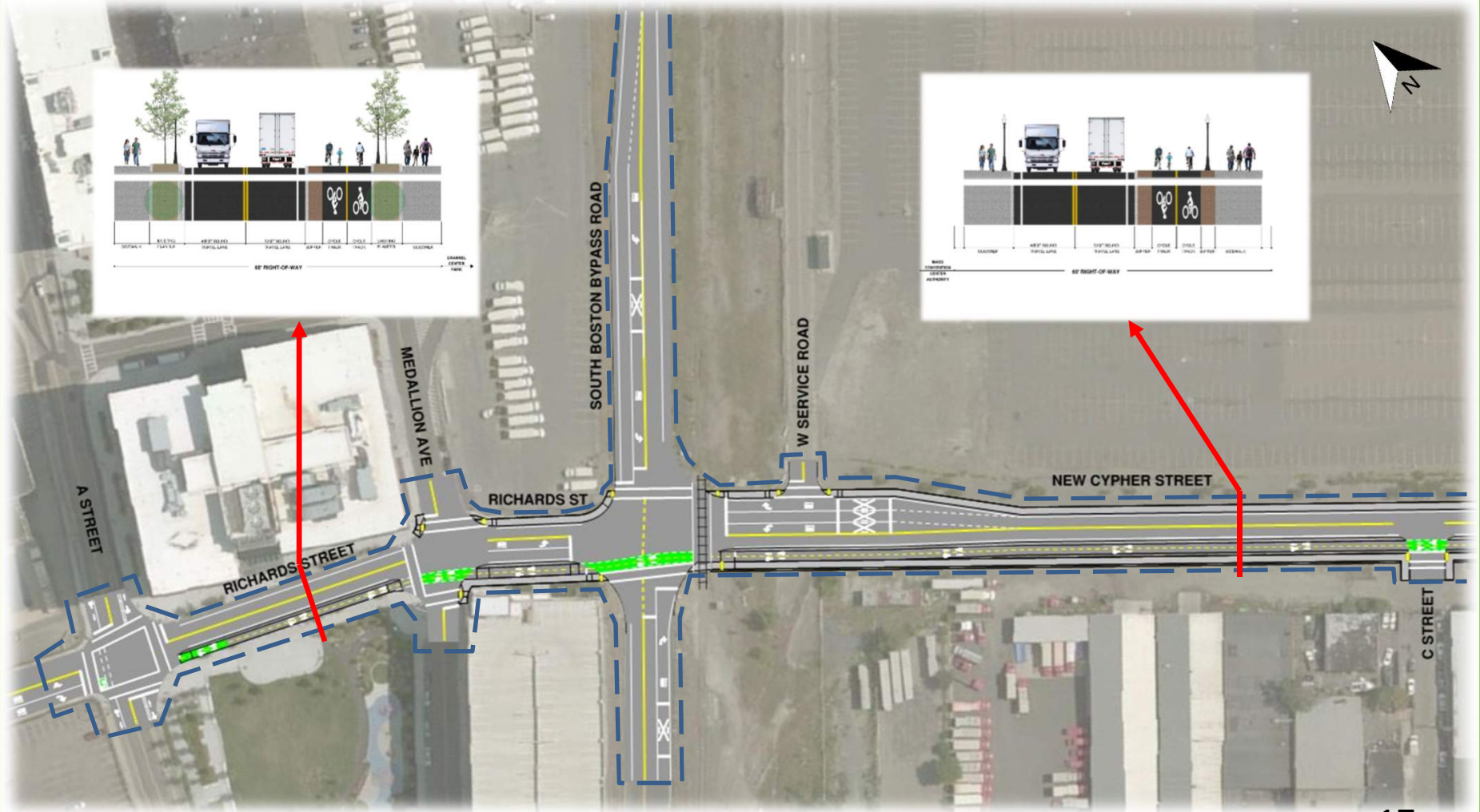
- **Avoidance**
- **Work focused on construction phase safety, materials management, and disposal of material excess to the project**
- **Most chemicals of concern are fairly non-mobile, and access prohibited**
- **Post construction will yield even more protective environment by virtue of new infrastructure limiting access to soils**

# Key Sheet

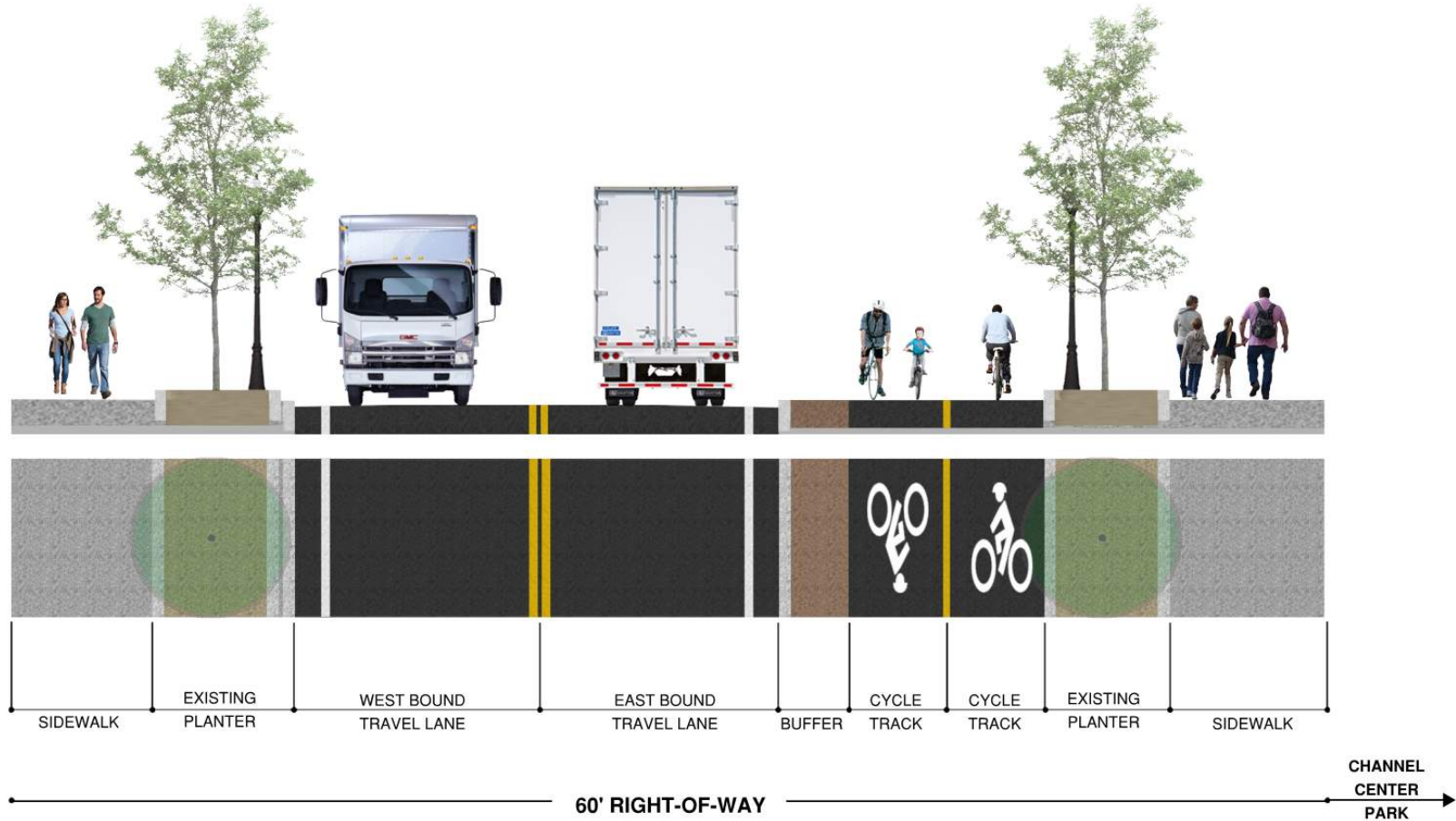




# Cypher/Richards Street at South Boston Bypass



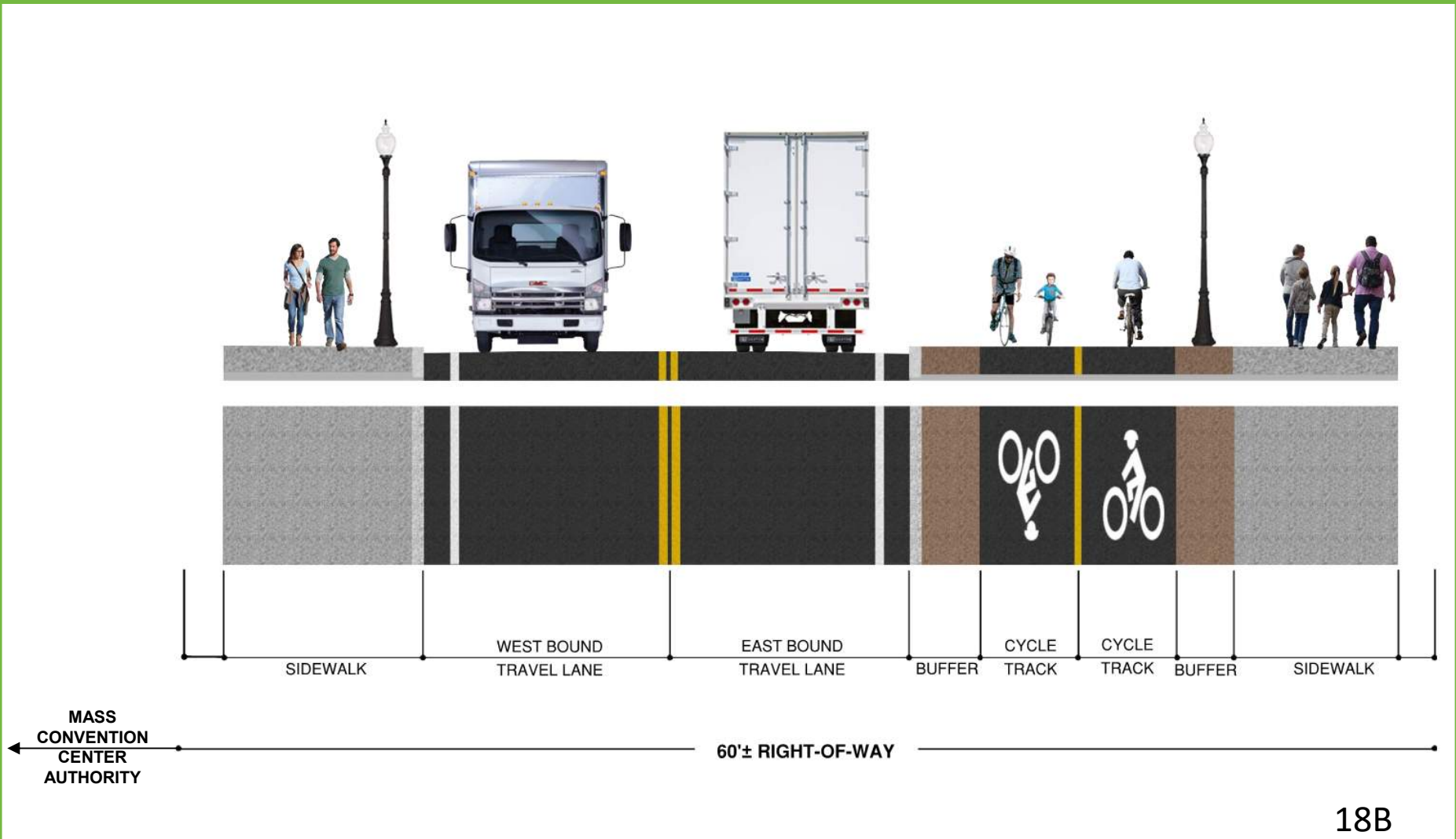
# Richards Street – A St to South Boston Bypass



# Future Richards St.



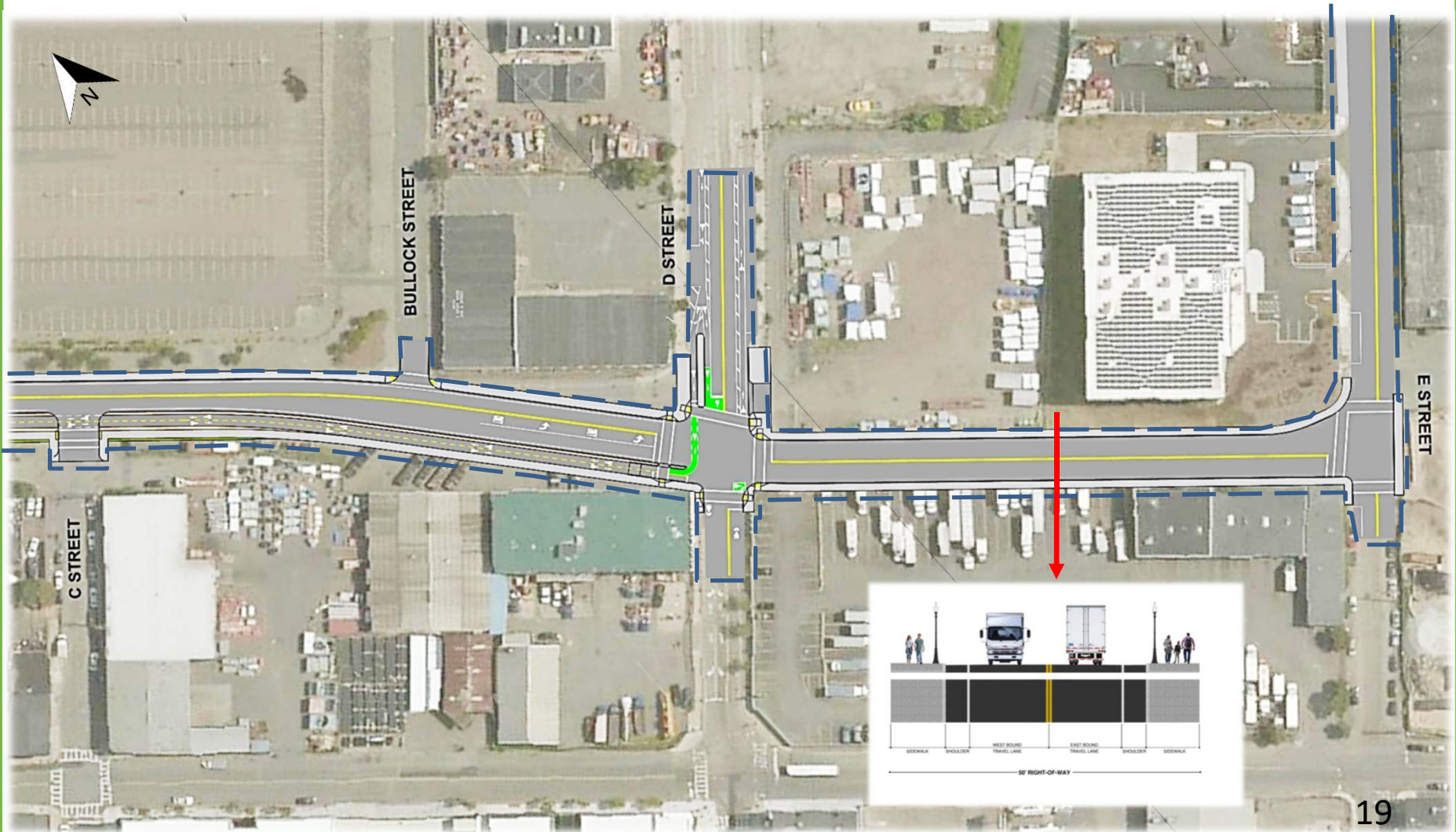
# Cypher Street – South Boston Bypass to D Street



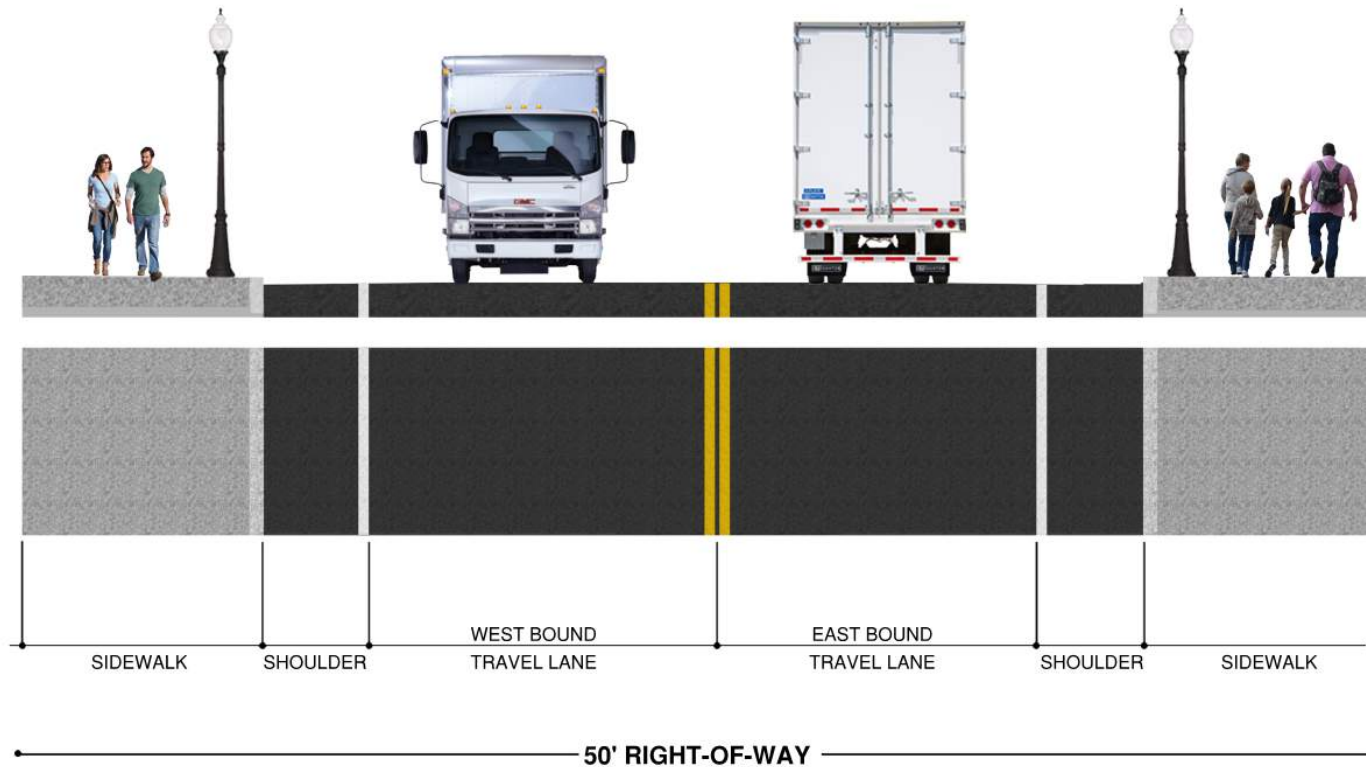
# Future Cypher St/S Boston Bypass Int.



# Cypher Street at D Street



# Cypher Street – D St to E St



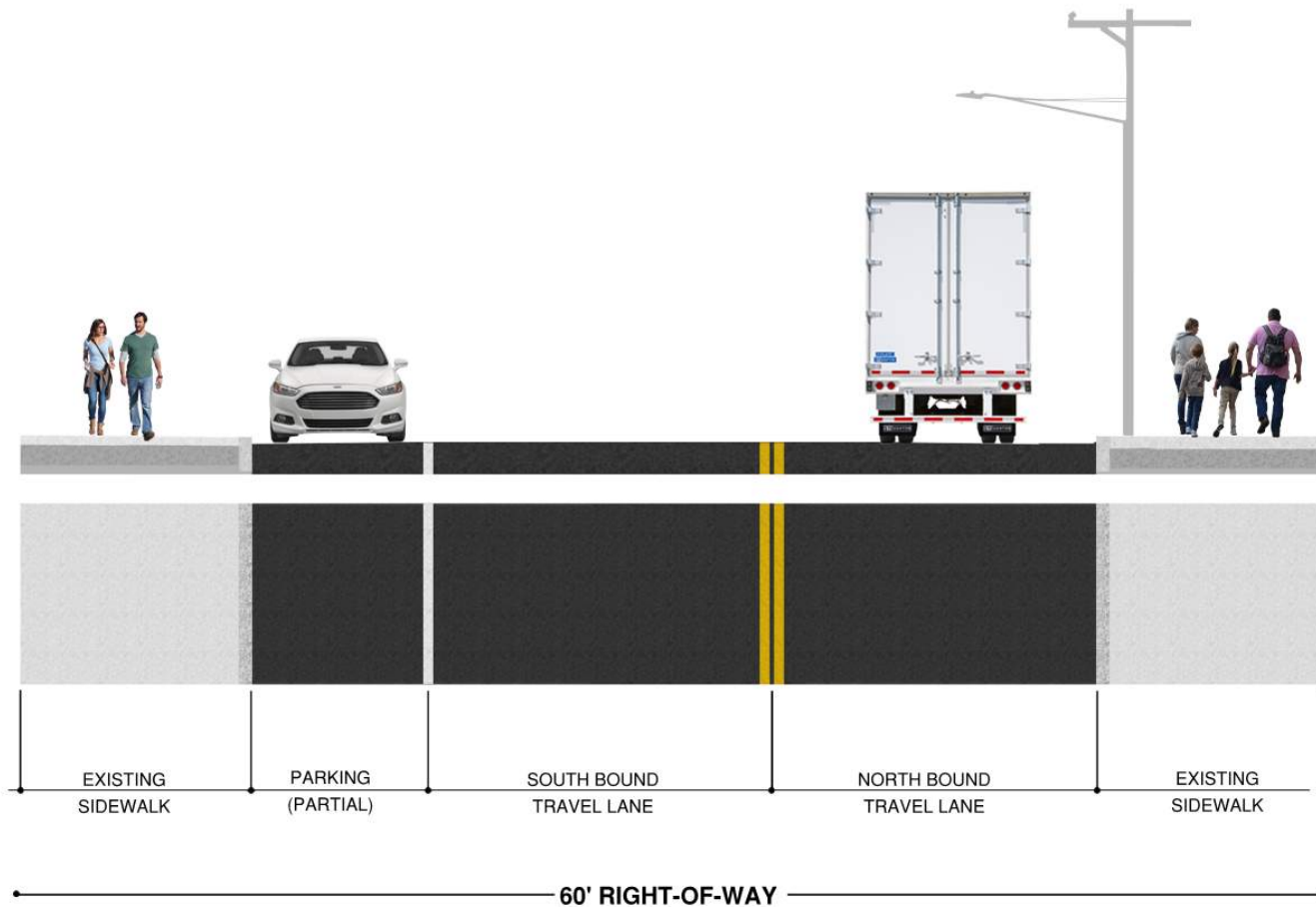
# E Street



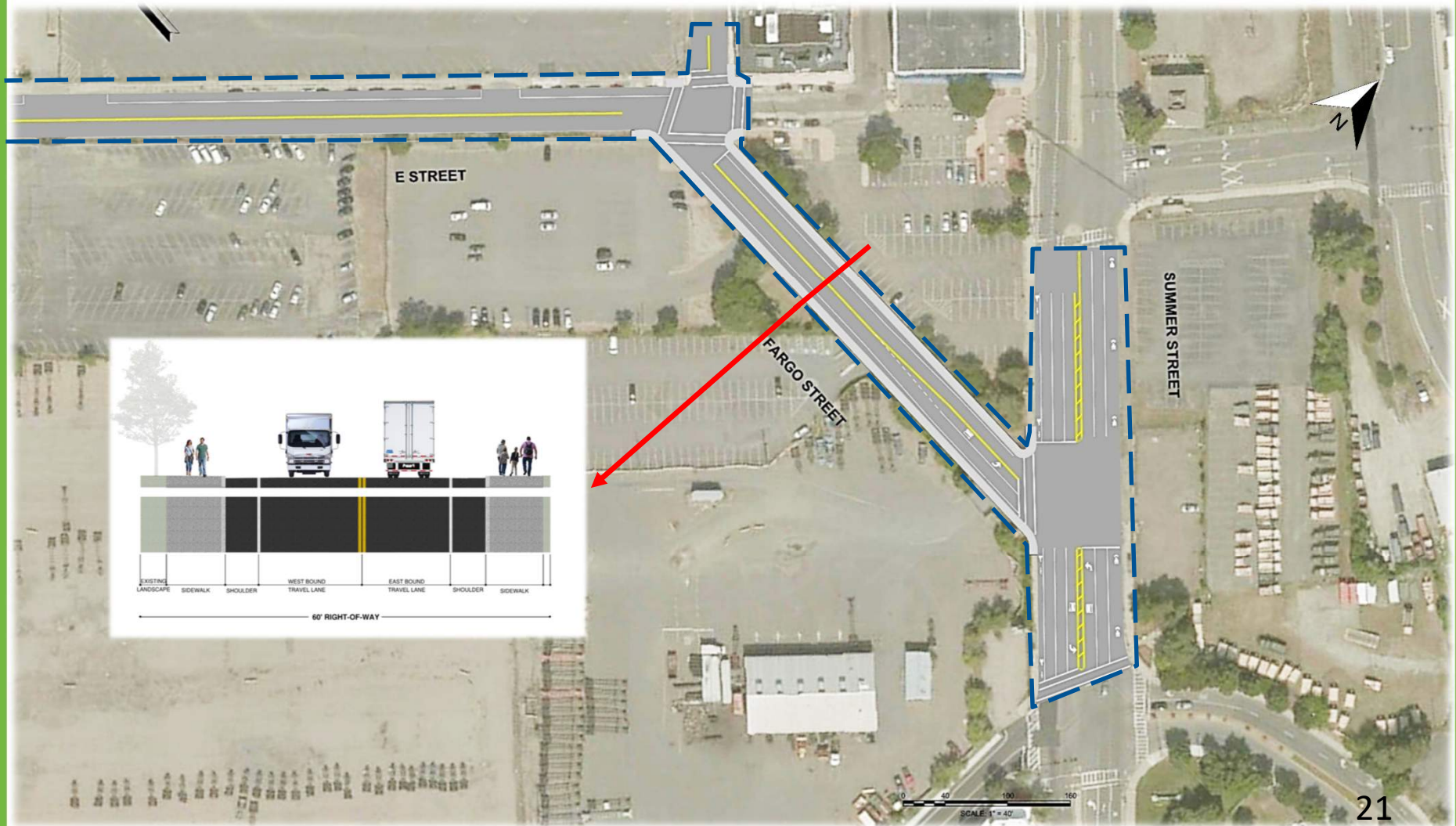
0 40 100 160  
SCALE: 1" = 40'



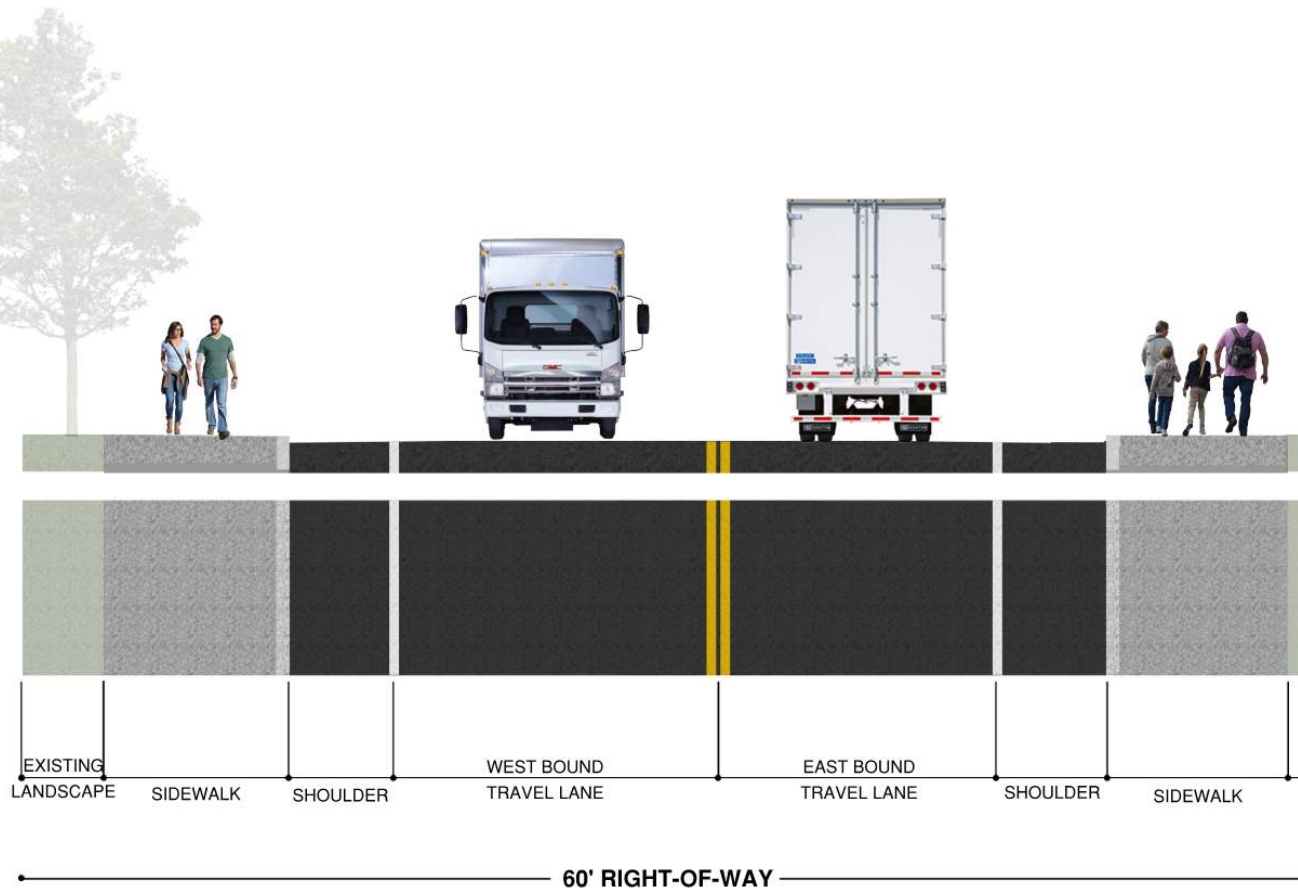
# E Street



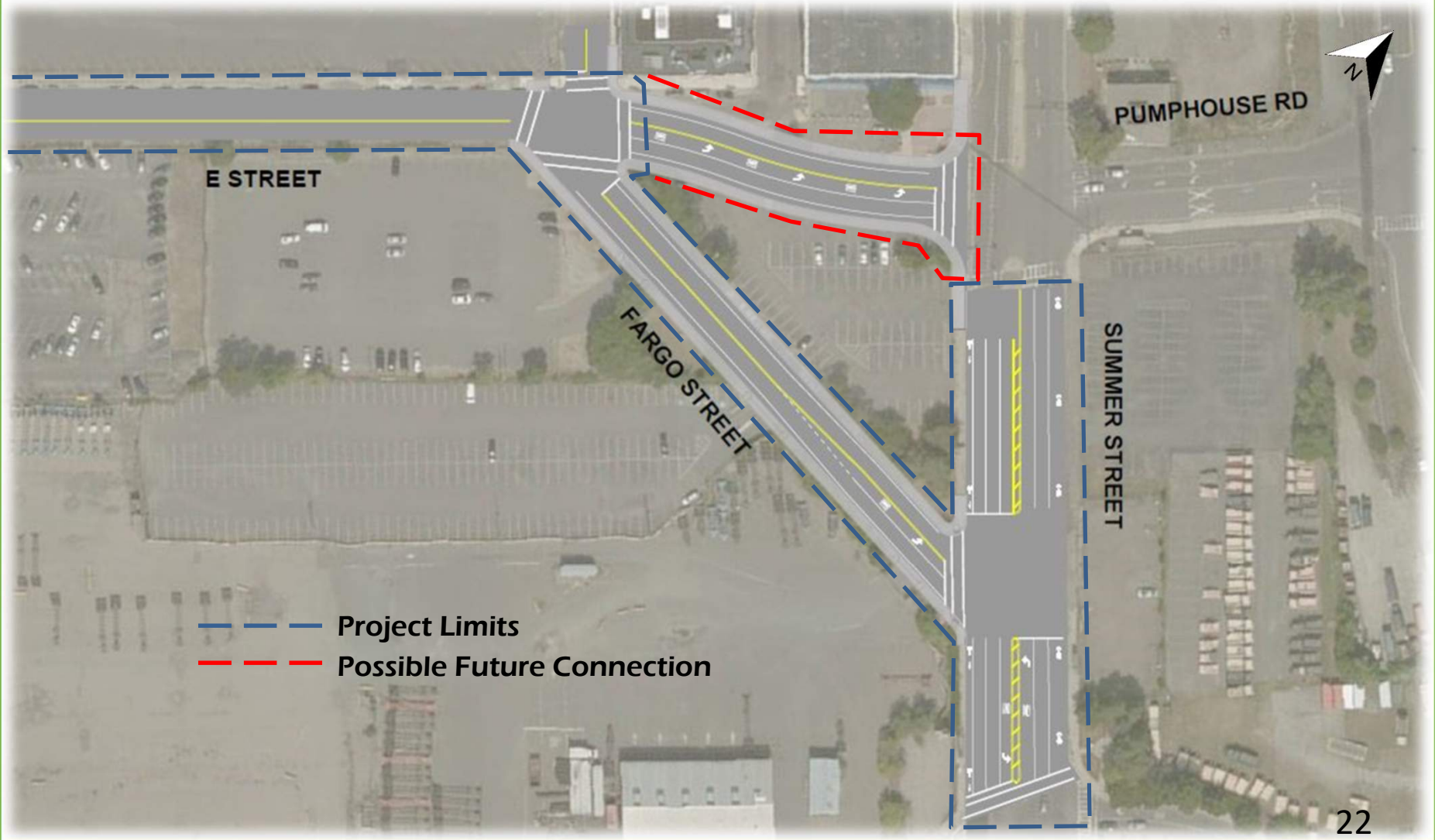
# E Street at Fargo Street



# Fargo Street

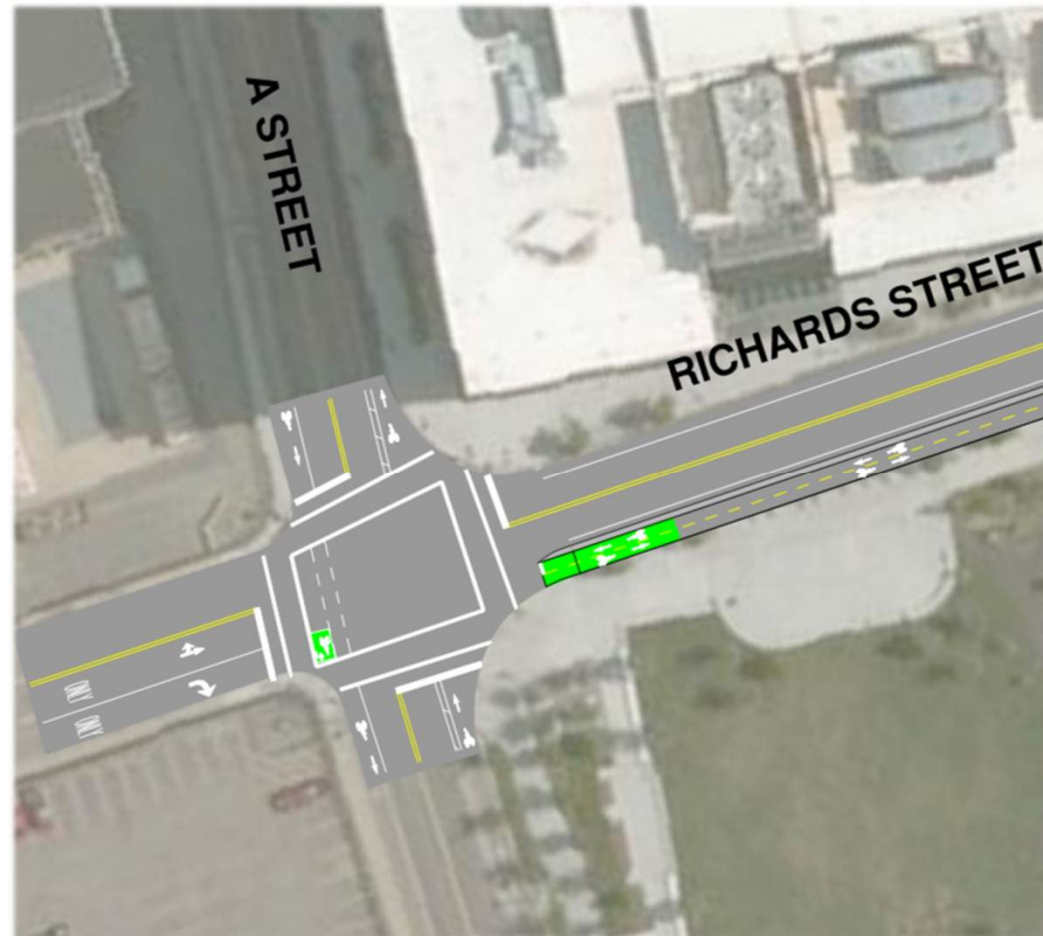


# E Street at Fargo Street



# Proposed Concept Plan Intersection

## A St at Richards



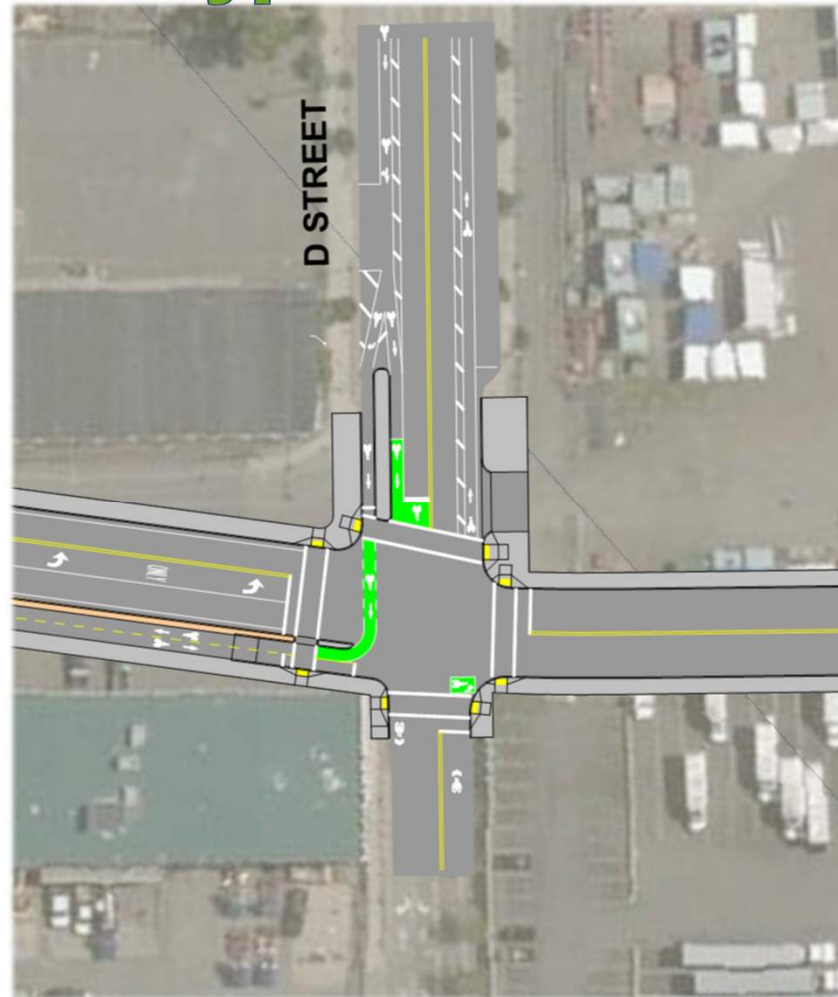
# Proposed Concept Plan Intersection

## Cypher St at South Boston Bypass



# Proposed Concept Plan Intersection

## Cypher St at D St



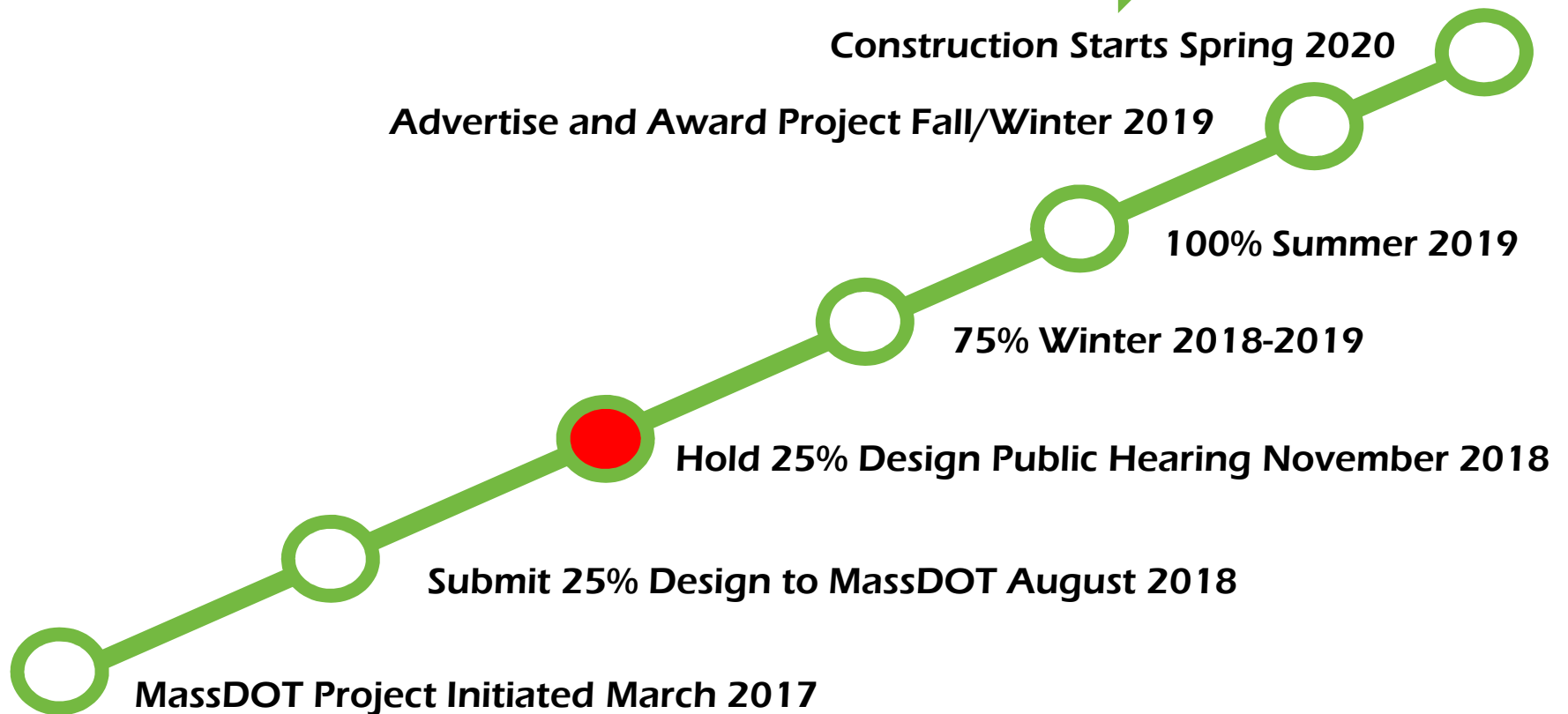
# Proposed Concept Plan Intersection

## Summer St at Fargo St





# Project Timeline



# Next Steps/Meeting

- Evaluate public input from today's meeting.
- Submit 75% Design documents to MassDOT for review.

# Thank You

## Q&A

Cypher, E, & Fargo Street Reconstruction  
Boston | Project File No. 608807

Public Information Meeting

Condon School, 200 D Street

South Boston

November 13, 2018 | 6:30pm - 8:30pm

# Contact Information

## Comments or questions?

Martin Nee  
City Point Partners  
617-548-4373  
[mnee@citypointpartners.com](mailto:mnee@citypointpartners.com)