



Public Information Meeting

February 9, 2016



HOWARD STEIN HUDSON

Engineers + Planners

Grand Prix of Boston Powered by LogMeIn

Engineers + Planners

- Labor Day weekend, September 2-4, 2016
- 100th Anniversary of the Indianapolis 500
- Reach an international TV audience
- Annual economic impact of \$52 million
- Over 40 signed partners from national, regional, and local companies
- Charitable partners include Play Brigade, the Greater Boston Food Bank, Veteran Homestead, and Massachusetts Fallen Heroes



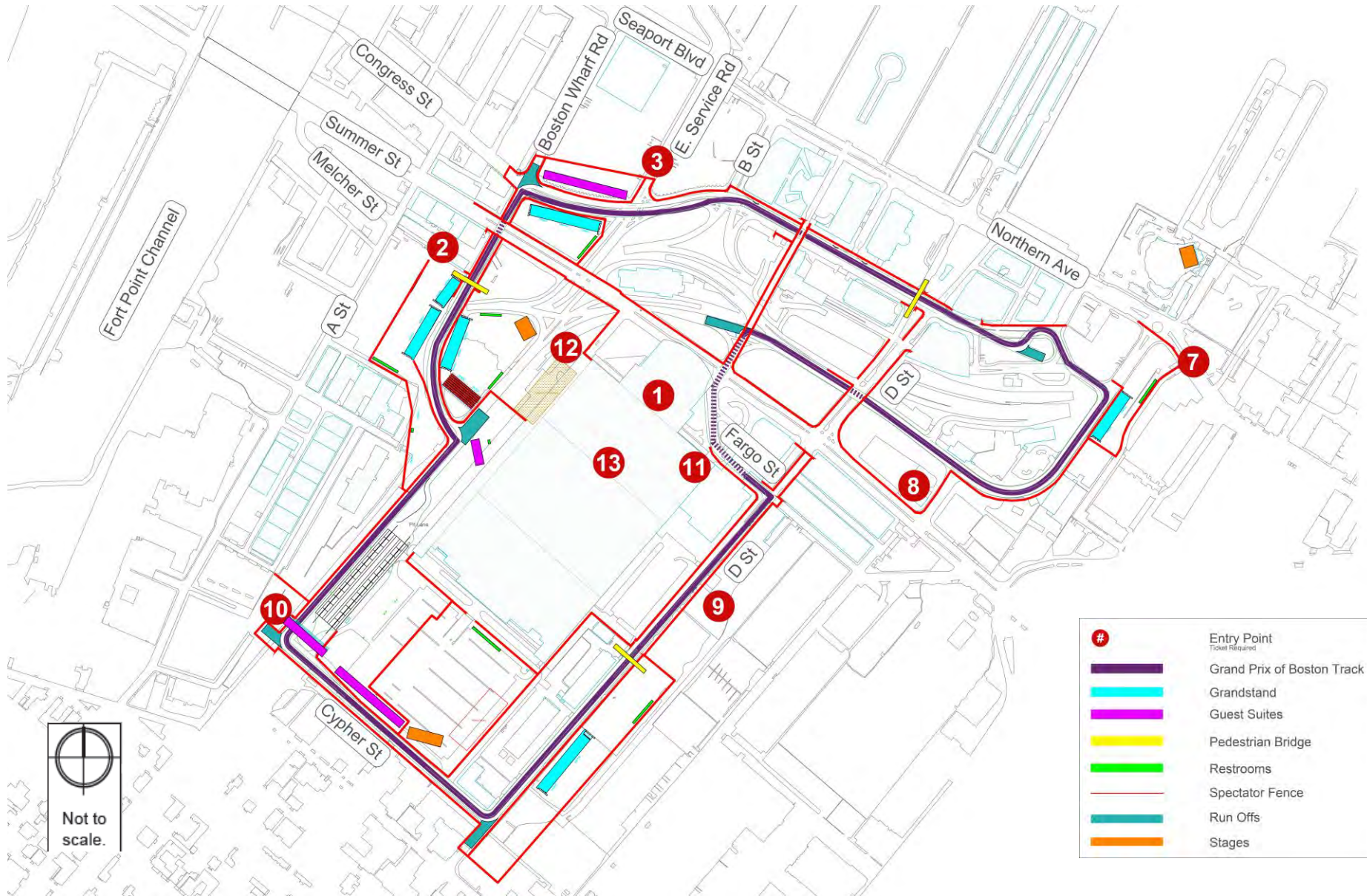
HOWARD STEIN HUDSON

Grand Prix of Boston

Track Overview

2

Engineers + Planners



Grand Prix of Boston

On-Track Event Schedule

DRAFT

3

Engineers + Planners

| Wednesday, August 31 | Thursday, September 1 | Friday, September 2 |
|---|--|---|
| 9 am – 5 pm Garage Hours | 8 am – 3 pm Credentials Open (Westin) | 8 am – 4:30 pm Credentials Open (Westin) |
| | | 7 am – 8 pm Garage Hours |
| 9 am – noon Sanctioning Body / Manufacturer / IMSP load-in | 8 am – 6 pm Garage Hours | 10 am – Public Gates Open |
| | | 10 am–noon – close streets |
| Noon – 4 pm Teams / Motor Coach / Hospitality load-in | | Lamborghini Practice 1 |
| | | IndyCar Practice 1 |
| | | Indy Lights Practice 1 |
| | | Super Truck Practice/ Qualifying |
| | | Lamborghini Practice 2 |
| | | IndyCar Practice 2 |
| | | 6 pm – streets re-open |
| | | 6:30 – 10 pm Concerts (South Lot) |

Grand Prix of Boston

On-Track Event Schedule

DRAFT

4

Engineers + Planners

| Saturday, September 3 | |
|------------------------|---|
| 6–8 am – close streets | 7 am – 3:30 pm Credentials Open (Westin) |
| VIP Rides | 7 am – 8 pm Garage Hours |
| Lamborghini Qualifying | 8 am – Public Gates Open |
| Indy Lights Practice | Action Sports in South Lot – various times during day |
| IndyCar Practice | 6 pm & 8 pm Concerts – BHB Pavilion |
| VIP Rides/Lunch Break | 7 pm – streets re-open |
| Super Truck Practice | |
| Lamborghini Race | |
| Indy Lights Qualifying | |
| IndyCar Qualifying | |
| Super Truck Race | |
| Charity Run/Walk | |

Grand Prix of Boston

On-Track Event Schedule

DRAFT

5

Engineers + Planners

| Sunday, September 4 | |
|-------------------------------------|---|
| 6–8 am – close streets | 7 am – 2:30 pm Credentials Open (Westin) |
| VIP Rides | 7 am – 11:59 pm Garage Hours |
| Indy Lights Warm up | 8 am – Public Gates Open |
| IndyCar Warm up | Action Sports in South Lot – various times during day |
| Lamborghini Race | 6 – 10 pm Concert – Location TBD |
| Indy Lights Race | 6 pm – streets re-open |
| Super Truck Race | |
| IndyCar Pre-race | |
| IndyCar Race and Post-race Activity | |



Pre-race Roadway Construction

6

Engineers + Planners

| MAY | | | | JUNE | | | | JULY | | | |
|-----|---|---|---|------|---|---|---|------|---|---|---|
| 1 | 2 | 3 | 4 | 1 | 2 | 3 | 4 | 1 | 2 | 3 | 4 |
| | | | | | | | | | | | |
| | | | | | | | | | | | |
| | | | | | | | | | | | |
| | | | | | | | | | | | |
| | | | | | | | | | | | |
| | | | | | | | | | | | |
| | | | | | | | | | | | |
| | | | | | | | | | | | |
| | | | | | | | | | | | |
| | | | | | | | | | | | |
| | | | | | | | | | | | |
| | | | | | | | | | | | |
| | | | | | | | | | | | |
| | | | | | | | | | | | |
| | | | | | | | | | | | |
| | | | | | | | | | | | |
| | | | | | | | | | | | |
| | | | | | | | | | | | |
| | | | | | | | | | | | |
| | | | | | | | | | | | |
| | | | | | | | | | | | |
| | | | | | | | | | | | |
| | | | | | | | | | | | |
| | | | | | | | | | | | |
| | | | | | | | | | | | |
| | | | | | | | | | | | |
| | | | | | | | | | | | |
| | | | | | | | | | | | |
| | | | | | | | | | | | |
| | | | | | | | | | | | |
| | | | | | | | | | | | |
| | | | | | | | | | | | |
| | | | | | | | | | | | |
| | | | | | | | | | | | |
| | | | | | | | | | | | |
| | | | | | | | | | | | |
| | | | | | | | | | | | |
| | | | | | | | | | | | |
| | | | | | | | | | | | |
| | | | | | | | | | | | |
| | | | | | | | | | | | |
| | | | | | | | | | | | |
| | | | | | | | | | | | |
| | | | | | | | | | | | |
| | | | | | | | | | | | |
| | | | | | | | | | | | |
| | | | | | | | | | | | |
| | | | | | | | | | | | |
| | | | | | | | | | | | |
| | | | | | | | | | | | |
| | | | | | | | | | | | |
| | | | | | | | | | | | |
| | | | | | | | | | | | |
| | | | | | | | | | | | |
| | | | | | | | | | | | |
| | | | | | | | | | | | |
| | | | | | | | | | | | |
| | | | | | | | | | | | |
| | | | | | | | | | | | |
| | | | | | | | | | | | |
| | | | | | | | | | | | |
| | | | | | | | | | | | |
| | | | | | | | | | | | |
| | | | | | | | | | | | |
| | | | | | | | | | | | |
| | | | | | | | | | | | |
| | | | | | | | | | | | |
| | | | | | | | | | | | |
| | | | | | | | | | | | |
| | | | | | | | | | | | |
| | | | | | | | | | | | |
| | | | | | | | | | | | |
| | | | | | | | | | | | |
| | | | | | | | | | | | |
| | | | | | | | | | | | |
| | | | | | | | | | | | |
| | | | | | | | | | | | |
| | | | | | | | | | | | |
| | | | | | | | | | | | |
| | | | | | | | | | | | |
| | | | | | | | | | | | |
| | | | | | | | | | | | |
| | | | | | | | | | | | |
| | | | | | | | | | | | |
| | | | | | | | | | | | |
| | | | | | | | | | | | |
| | | | | | | | | | | | |
| | | | | | | | | | | | |
| | | | | | | | | | | | |
| | | | | | | | | | | | |
| | | | | | | | | | | | |
| | | | | | | | | | | | |
| | | | | | | | | | | | |
| | | | | | | | | | | | |
| | | | | | | | | | | | |
| | | | | | | | | | | | |
| | | | | | | | | | | | |
| | | | | | | | | | | | |
| | | | | | | | | | | | |
| | | | | | | | | | | | |
| | | | | | | | | | | | |
| | | | | | | | | | | | |
| | | | | | | | | | | | |
| | | | | | | | | | | | |
| | | | | | | | | | | | |
| | | | | | | | | | | | |
| | | | | | | | | | | | |
| | | | | | | | | | | | |
| | | | | | | | | | | | |
| | | | | | | | | | | | |
| | | | | | | | | | | | |
| | | | | | | | | | | | |
| | | | | | | | | | | | |
| | | | | | | | | | | | |
| | | | | | | | | | | | |
| | | | | | | | | | | | |
| | | | | | | | | | | | |
| | | | | | | | | | | | |
| | | | | | | | | | | | |
| | | | | | | | | | | | |
| | | | | | | | | | | | |
| | | | | | | | | | | | |
| | | | | | | | | | | | |
| | | | | | | | | | | | |
| | | | | | | | | | | | |
| | | | | | | | | | | | |



HOWARD STEIN HUDSON

Pre-race Barrier Installation

7

Engineers + Planners

| AUGUST | | | | SEPTEMBER | |
|----------------------|---|-----------------|---|-----------|---|
| 1 | 2 | 3 | 4 | 1 | 2 |
| | | CYPHER ST | | | |
| | | S BOSTON BYPASS | | | |
| | | W SERVICE RD | | | |
| | | HAUL RD | | | |
| | | FARGO ST | | | |
| | | D ST | | | |
| | | CONGRESS ST | | | |
| | | RAMP CLOSURES | | | |
| | | RACE WEEKEND | | | |
| BARRIER INSTALLATION | | | | | |



HOWARD STEIN HUDSON

A Street at Wormwood Street

8

Engineers + Planners

Looking Northeast toward West Service Road



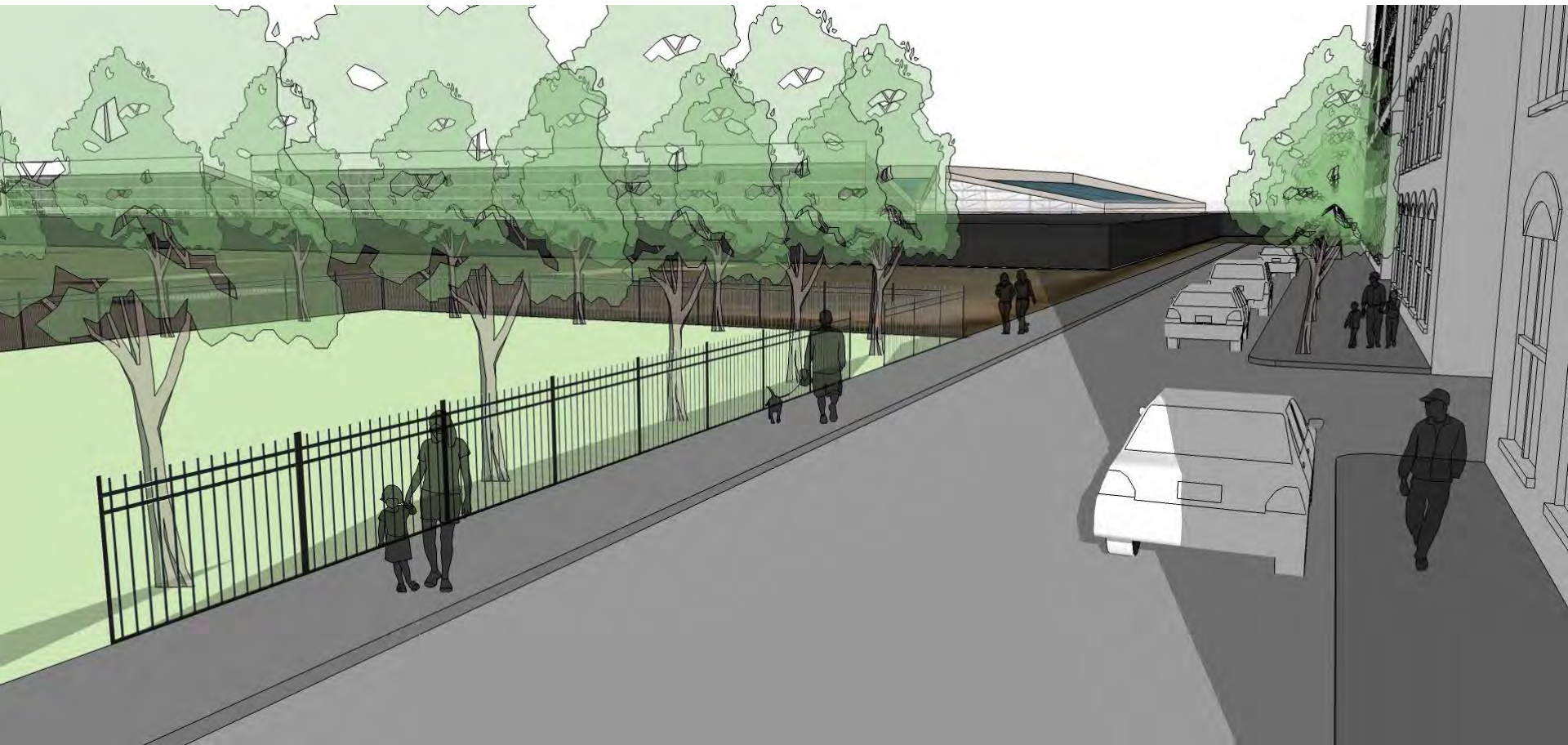
HOWARD STEIN HUDSON

Wormwood Street near Wormwood Park

9

Engineers + Planners

Looking East toward West Service Road



HOWARD STEIN HUDSON

West Service Road at Grandstands

10

Engineers + Planners

Looking Southwest toward A Street



HOWARD STEIN HUDSON

West Service Road at Grandstands

11

Engineers + Planners

Looking Southwest toward A Street



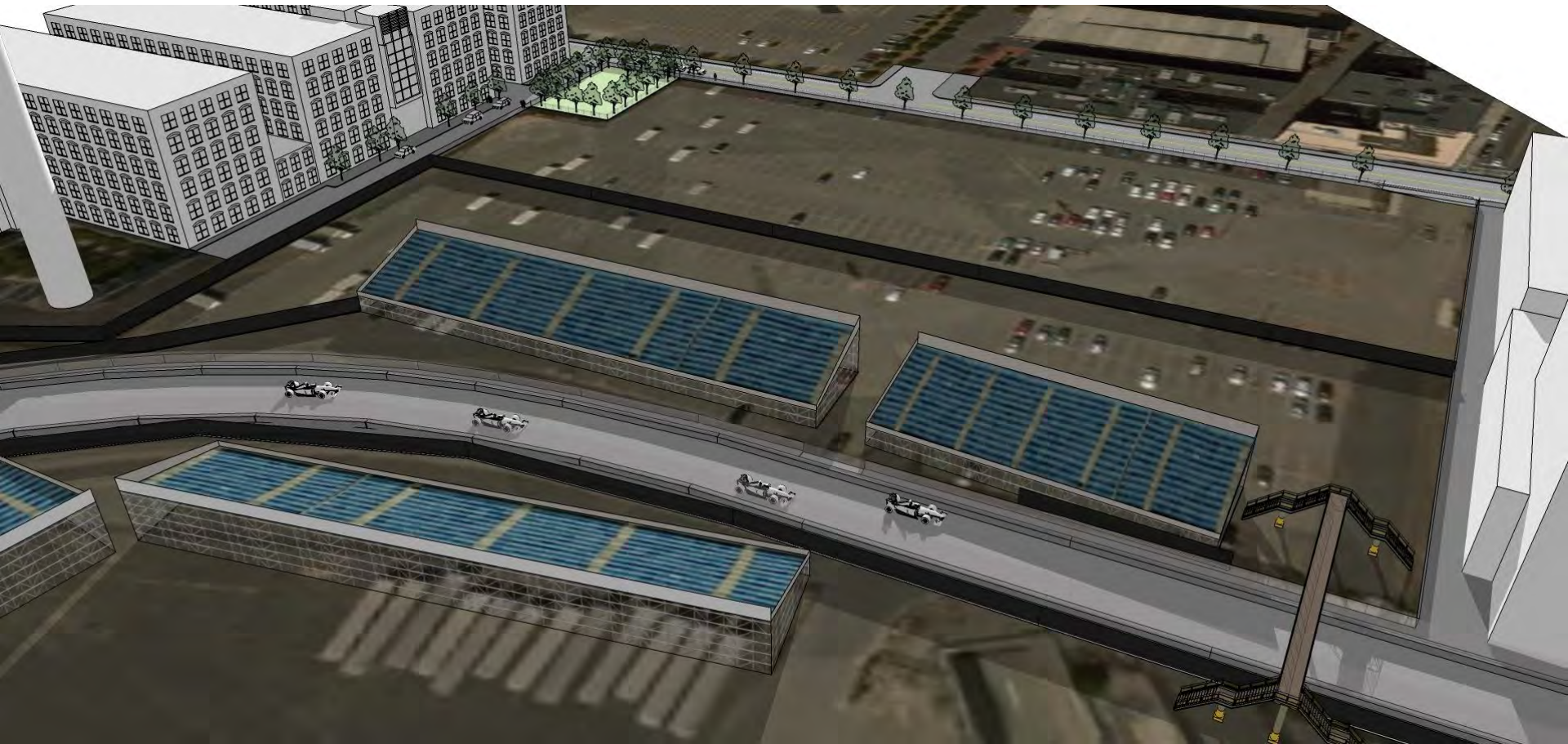
HOWARD STEIN HUDSON

West Service Road at Grandstands

12

Engineers + Planners

Looking West toward A Street



HOWARD STEIN HUDSON

Congress Street between B Street and Seaport Lane

13

Engineers + Planners

Looking West Toward Fort Point Channel



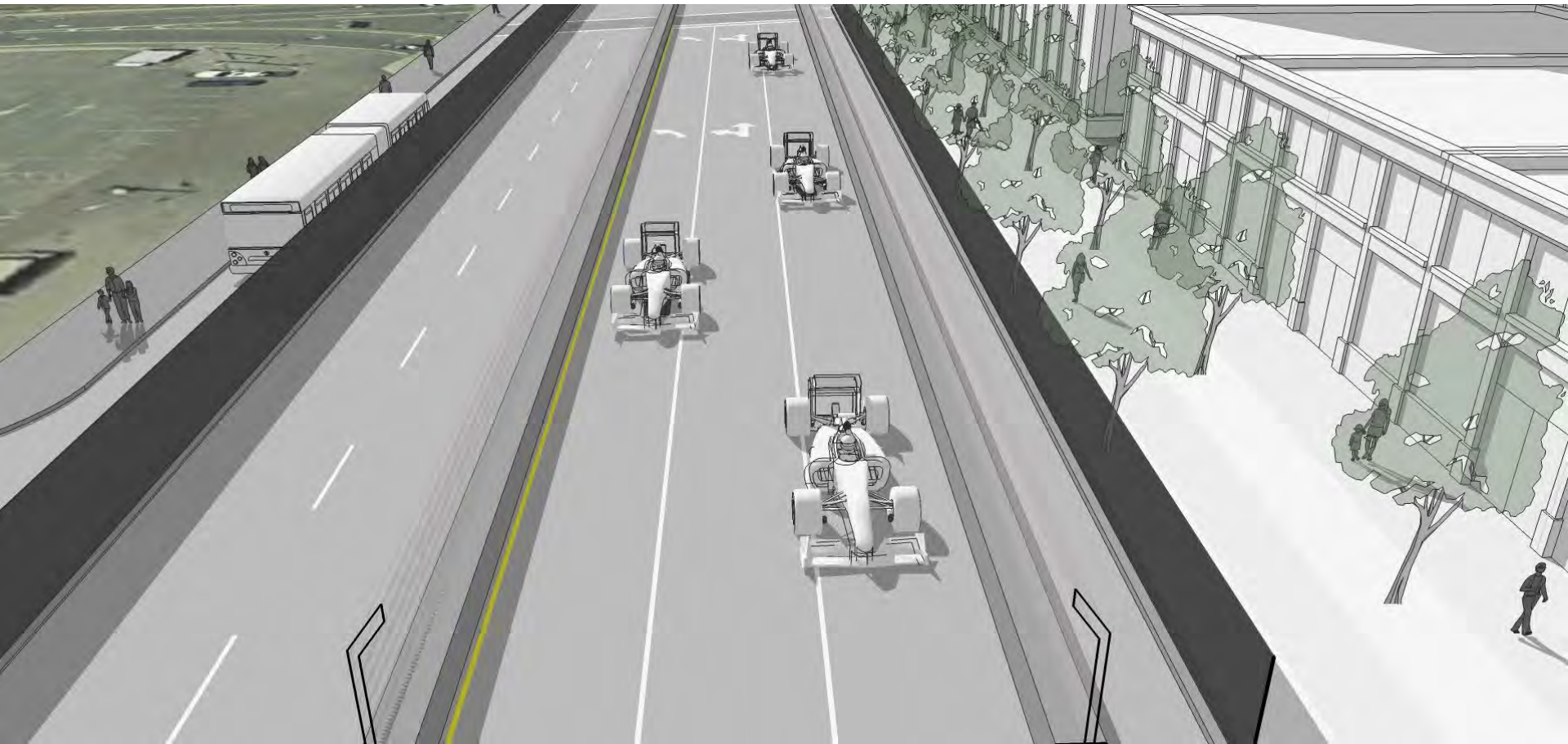
HOWARD STEIN HUDSON

Congress Street between B Street and Seaport Lane

14

Engineers + Planners

Looking West Toward Fort Point Channel



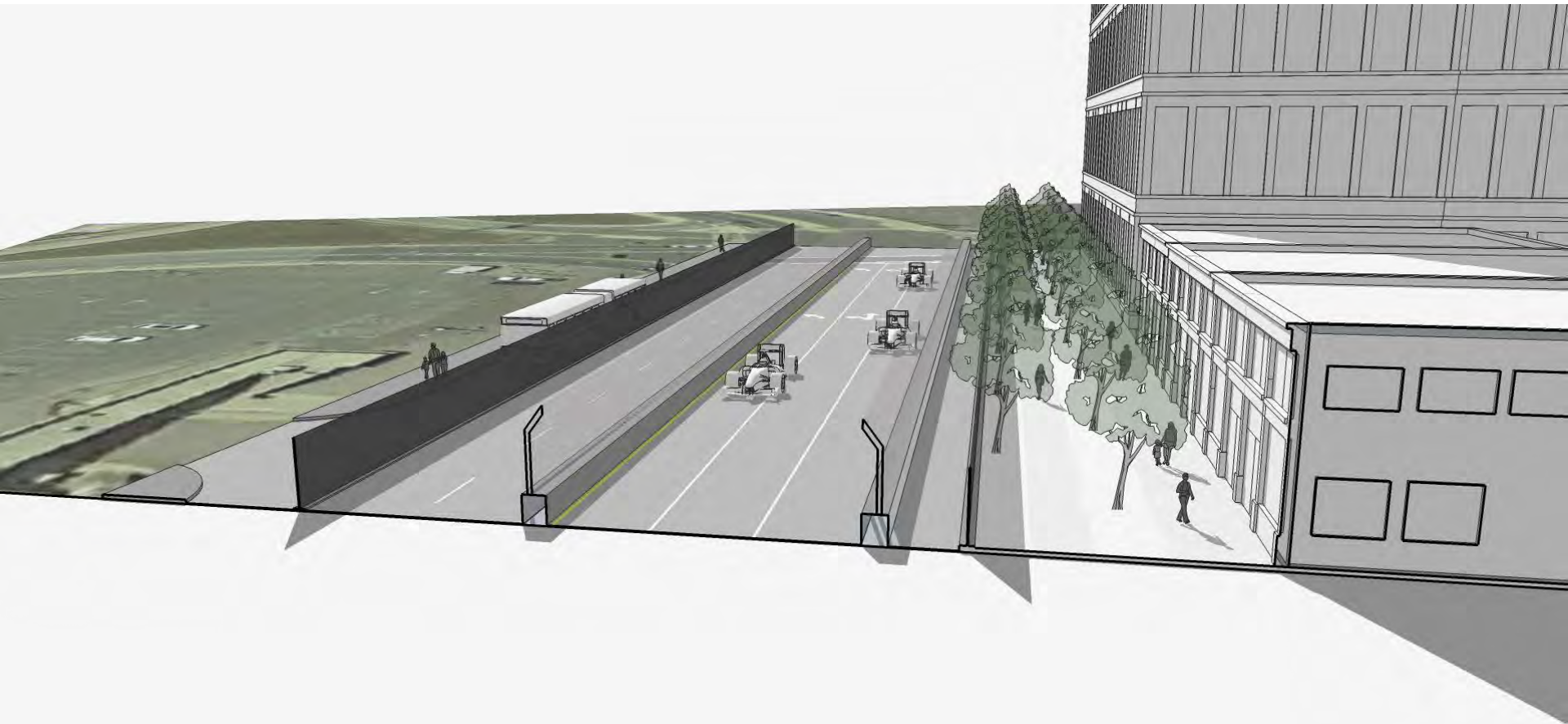
HOWARD STEIN HUDSON

Congress Street between B Street and Seaport Lane

15

Engineers + Planners

Looking West Toward Fort Point Channel



HOWARD STEIN HUDSON

Congress Street between B Street and Seaport Lane

16

Engineers + Planners

Looking North toward Race Track



HOWARD STEIN HUDSON

D Street at the Lawn on D

17

Engineers + Planners

Looking South toward Cypher Street



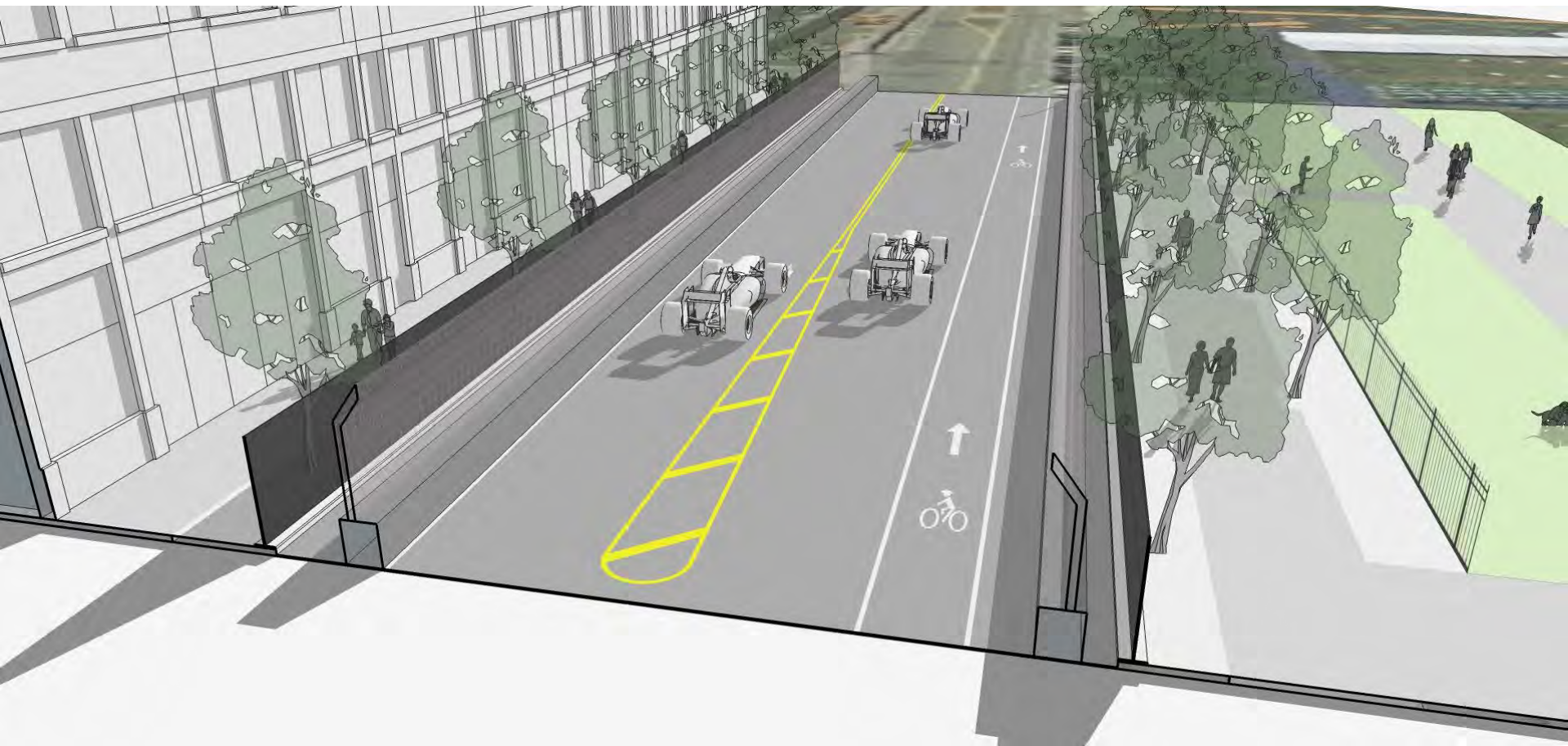
HOWARD STEIN HUDSON

D Street at the Lawn on D

18

Engineers + Planners

Looking South toward Cypher Street



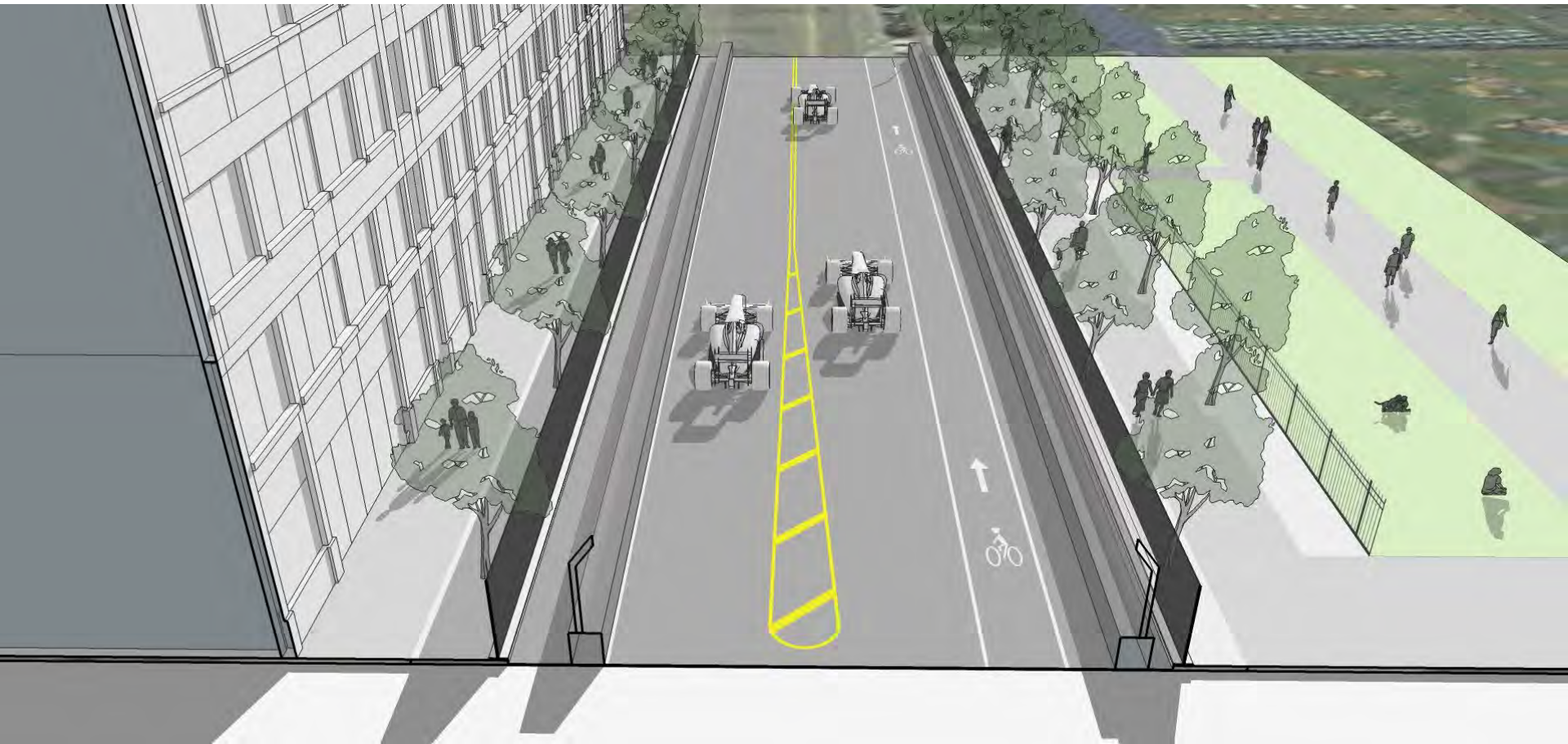
HOWARD STEIN HUDSON

D Street at the Lawn on D

19

Engineers + Planners

Looking South toward Cypher Street



HOWARD STEIN HUDSON

D Street at the Lawn on D

20

Engineers + Planners

Looking East at Race Track

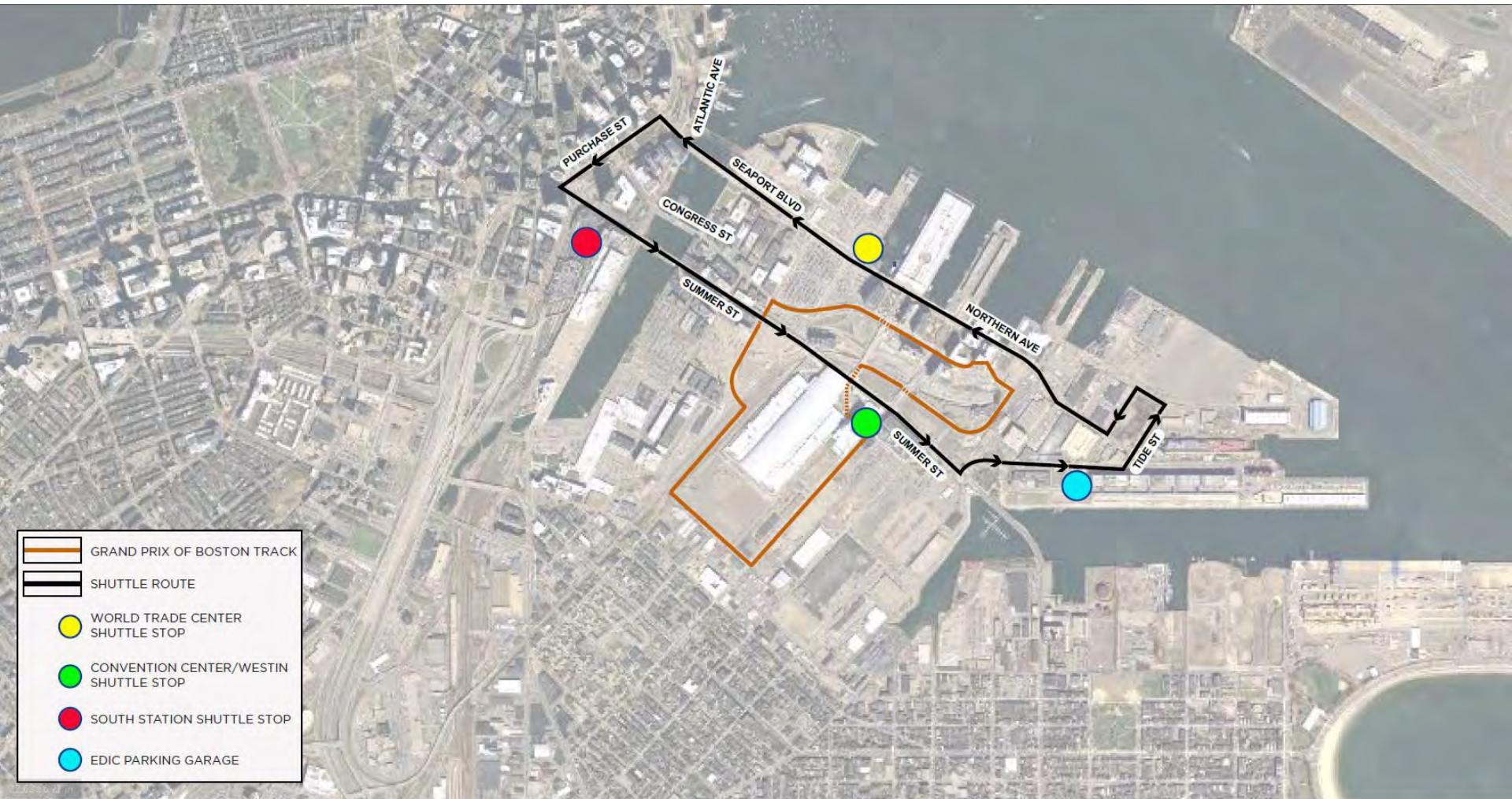


HOWARD STEIN HUDSON

Shuttle Routes – Seaport Shuttle

21

Engineers + Planners



HOWARD STEIN HUDSON

Shuttle Routes – Suffolk Downs Shuttle

22

Engineers + Planners

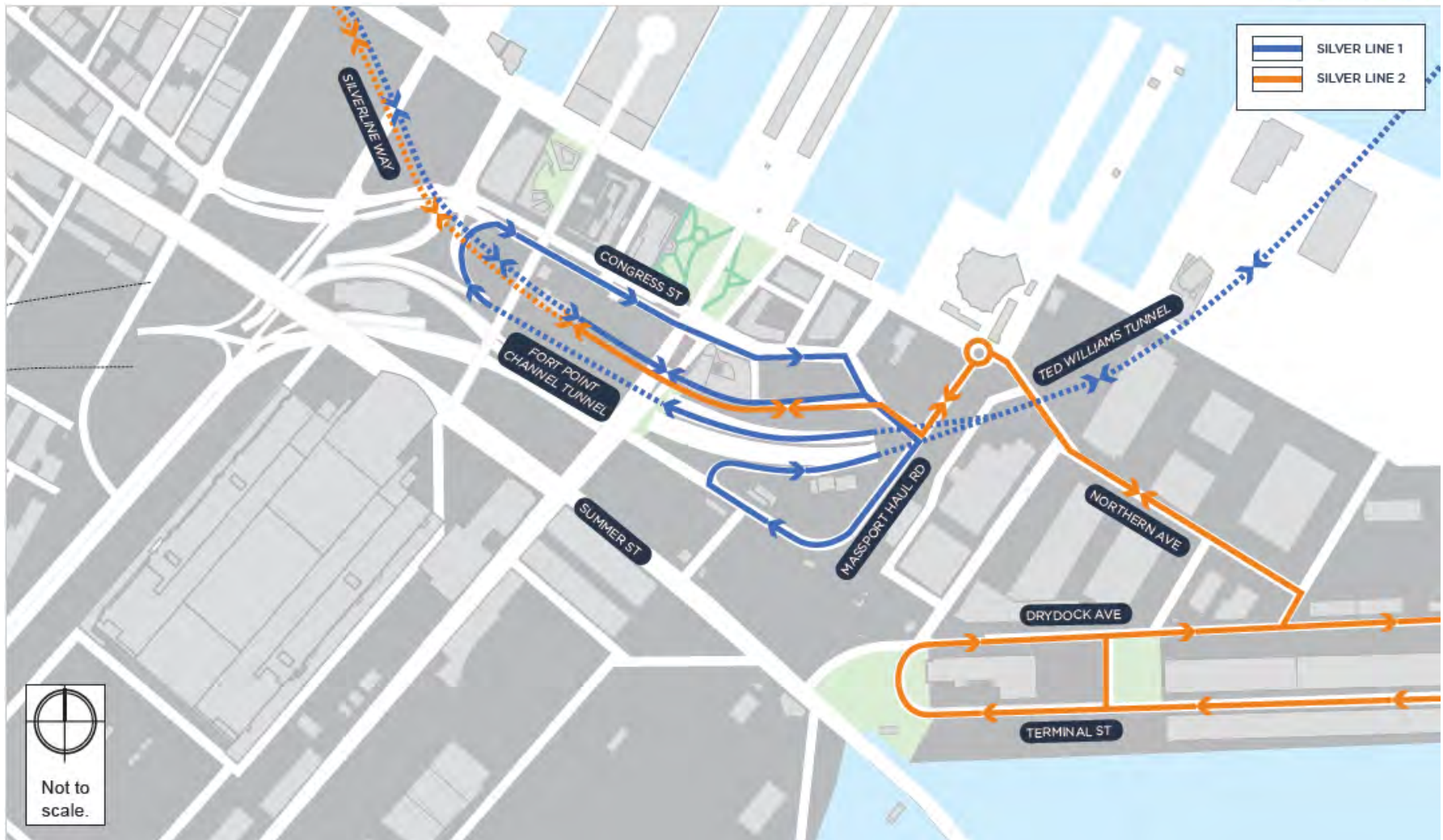


HOWARD STEIN HUDSON

MBTA Silver Line – Existing Routes

23

Engineers + Planners

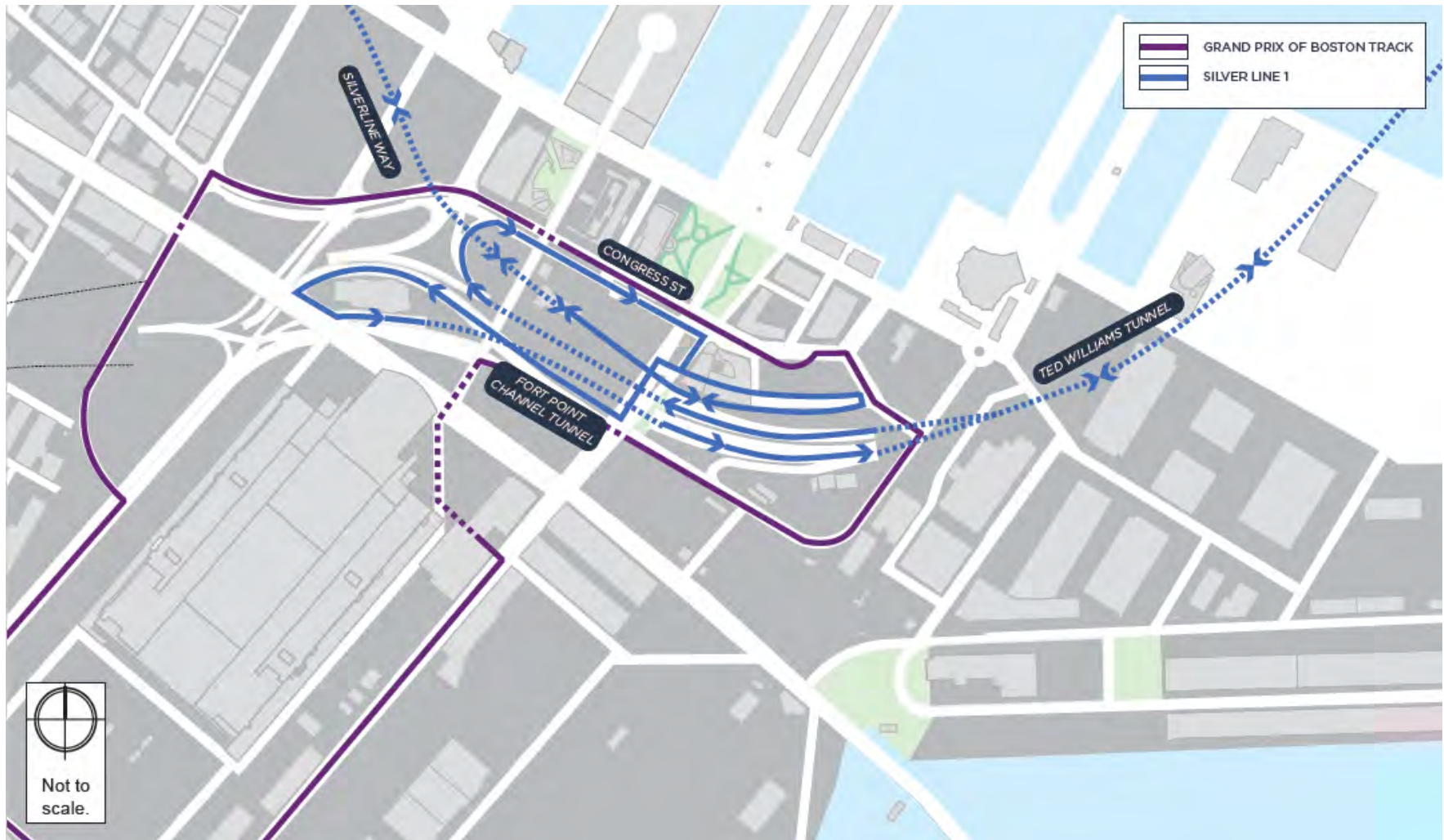


HOWARD STEIN HUDSON

MBTA Silver Line – Proposed SL1 Detour Route

24

Engineers + Planners

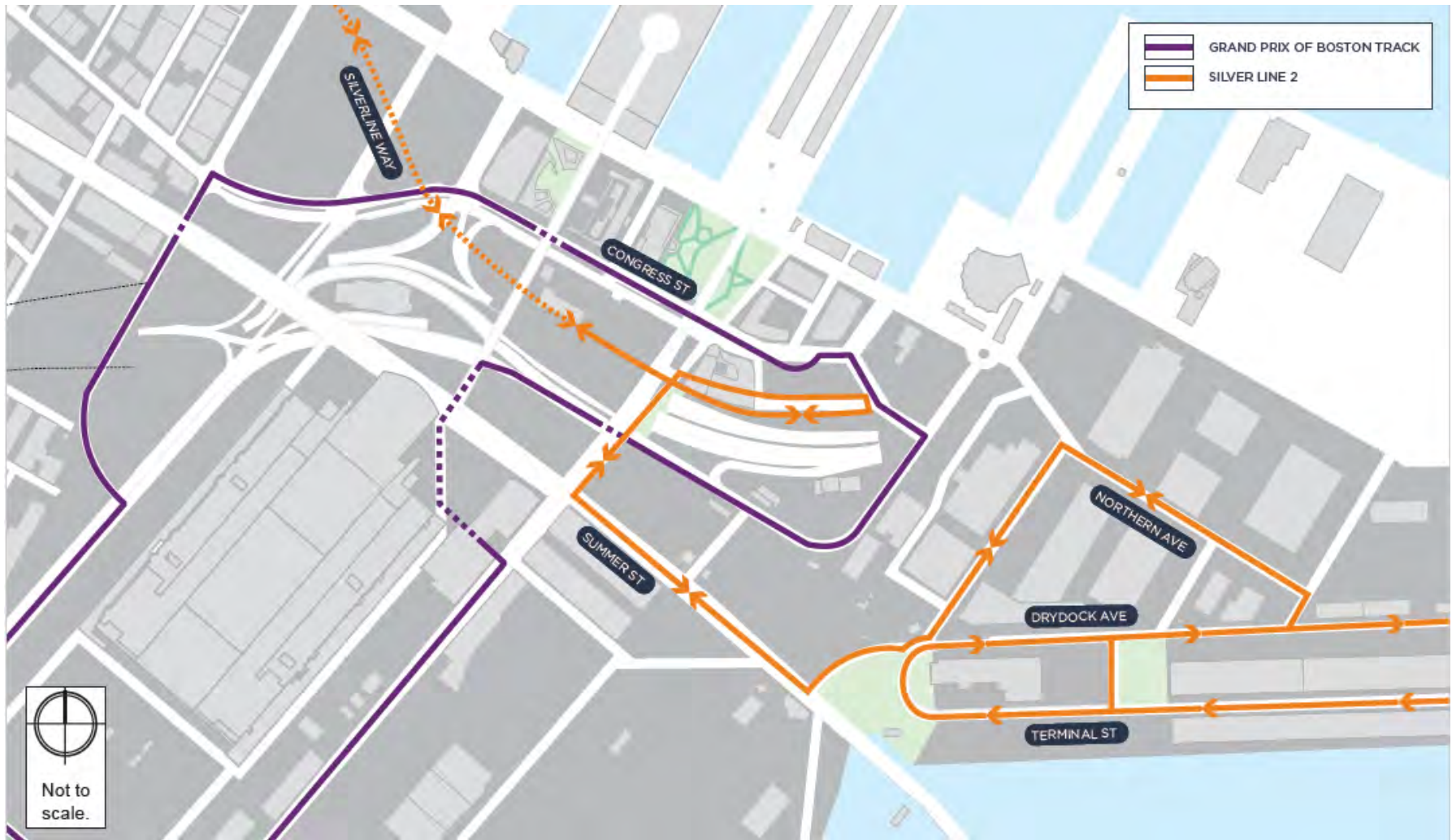


HOWARD STEIN HUDSON

MBTA Silver Line – Proposed SL2 Detour Route

25

Engineers + Planners



HOWARD STEIN HUDSON

Detour Routes – I-90 Eastbound

26

Engineers + Planners

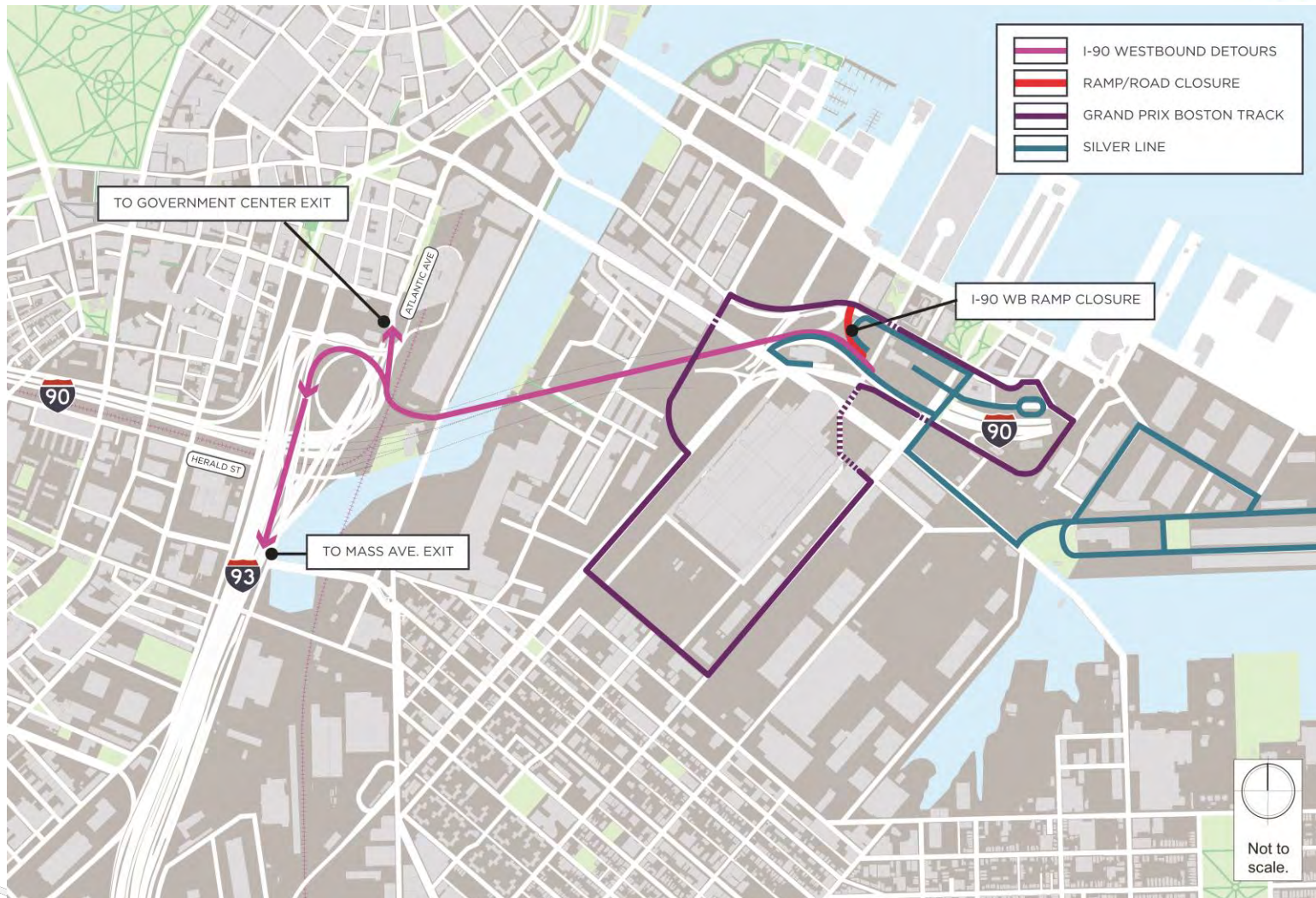


HOWARD STEIN HUDSON

Detour Routes – I-90 Westbound

27

Engineers + Planners

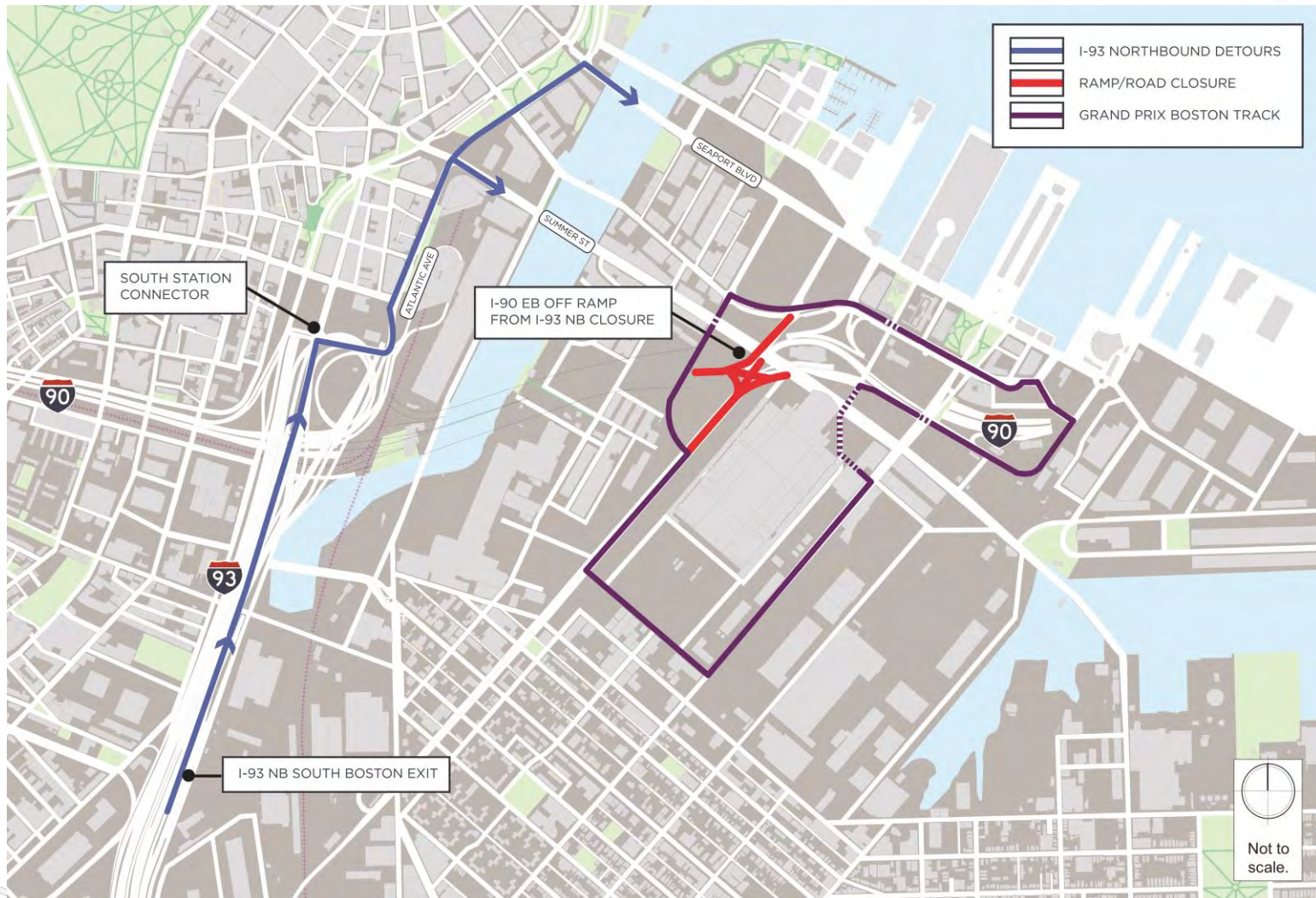


HOWARD STEIN HUDSON

Detour Routes – I-93 Northbound

28

Engineers + Planners

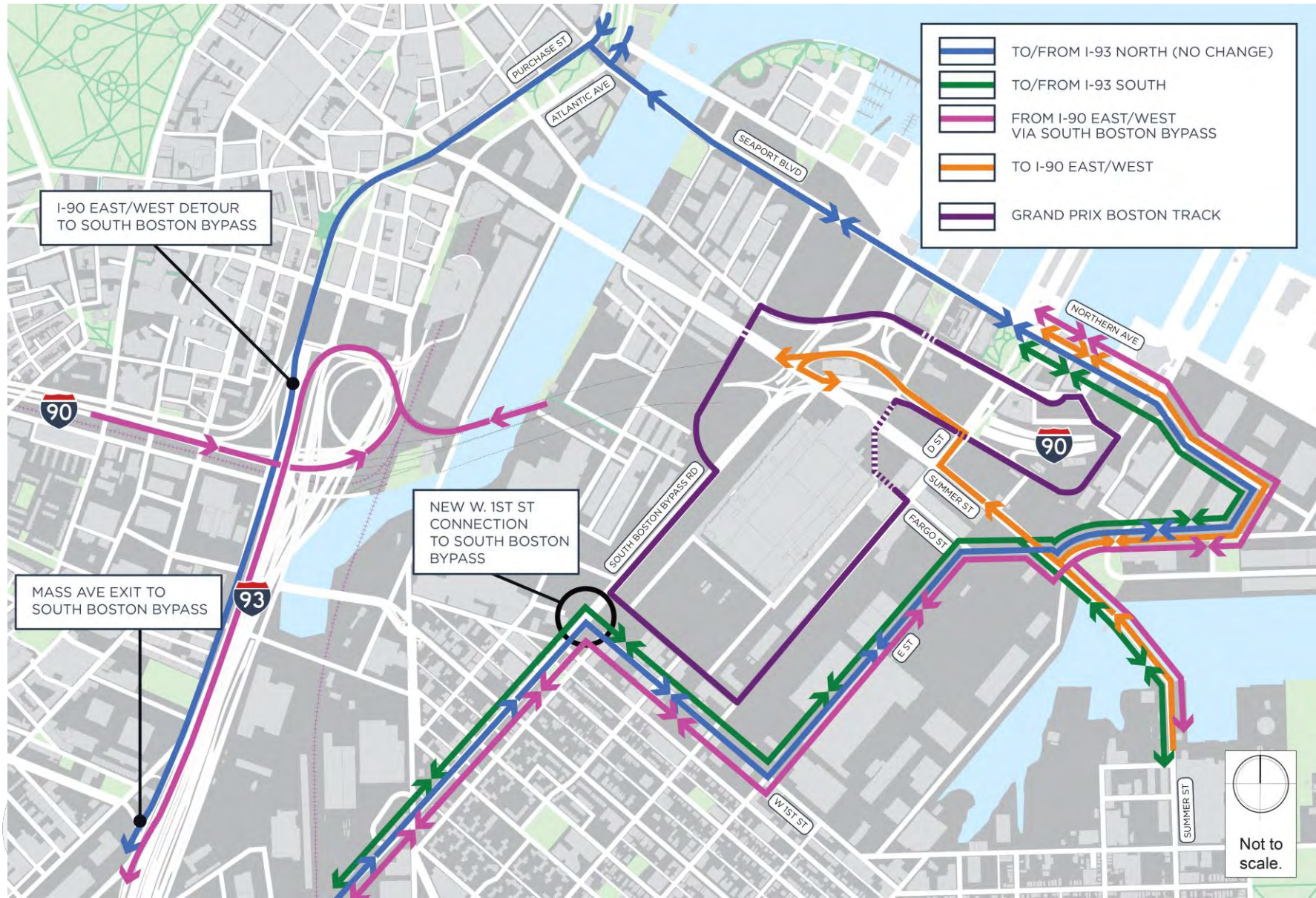


HOWARD STEIN HUDSON

BMIP/EDIC/Conley Access

29

Engineers + Planners





HOWARD STEIN HUDSON

www.hshassoc.com